

WEATHER

Thursday, Jan. 31	20	0	0.00
Friday, Feb. 1	17	3	0.00
Saturday, Feb. 2	20	1	0.00
Sunday, Feb. 3	19	2	Trace
Monday, Feb. 4	20	6	0.00
Tuesday, Feb. 5	22	8	0.00
Wednesday, Feb. 6	25	10	Trace

The Chelsea Standard

QUOTE

"Every man is worth just as much as the things he busies himself with."
—Marcus Aurelius.

ONE HUNDRED-TENTH YEAR—No. 35 20 Pages This Week Plus Supplement CHELSEA, MICHIGAN, THURSDAY, FEBRUARY 7, 1980 USPS 101-720 25c per copy SUBSCRIPTION: \$8.00 PER YEAR

Lioness Club Organizing In Chelsea

Strong interest has been shown in the formation of a Chelsea Lioness Club. Interested women are encouraged to attend the upcoming meeting to become more familiar with this community service organization and ask any questions they may have.

The meeting will be held at Chelsea Community Hospital Monday, Feb. 11, 7:30 p.m. in the Conference Room.

Chelsea's Lioness Club is open to any woman who wishes to express her concern for human need and is also a way to meet new friends.

Saturday, March 15, has been chosen as the Chelsea Lioness Charter Night which will be held in the dining room of Chelsea Hospital. Those women interested in becoming members prior to charter night will be recognized as charter members and inducted into the Lioness Club by District Governor, Lion R.J. (Bob) Myers.

For more information on the club, call Adamine Michelsen, 475-9455.



DUMP SITE: Barrels, to be used by the prosecutor's office as evidence against Sycor, Inc. on charges of "illegally engaging, employing or contracting with another to remove liquid industrial wastes," sit near the alleged dump site on the Hashley Rd. property of John Culp. Culp has not been charged with any wrong doing, according to Prosecutor David Lady.

Cagers Drop Milan from Title Race

Milan was eliminated from a shot at the SEC title last Saturday night as Chelsea's varsity cagers outlasted the Big Reds in a heavily defensive battle, 45-37.

Neither team was able to successfully circumvent the other's defense, Coach Robin Raymond said, and therefore were content to work the ball around, be patient and take the good shots.

The Bulldogs led, 24-18, at half time, and were able to control most of the second half through an outstanding half-court defensive game.

Nevertheless, Milan made a run at the Bulldogs with just two minutes left in the contest. The score was 39-35, Chelsea, and Jeff Dils made a 12 foot jumper. Milan came back with an outside jump shot by Gary Chattell, but Karl Albrecht hit a lay-up and then put a rebound back in to regain the momentum for Chelsea.

This game was typical of most Bulldog contests this season, with Chelsea on top by 8 to 10 points for the major part of the contest. "They made a late run at us," said Raymond, "but Albrecht's basket was a real back-breaker."

Individually, Dils led with 16 points. Karl Albrecht played his best game of the year, scoring 13 points and hauling in seven rebounds. Don Schrotenboer scored six and had eight rebounds. Brad Knickerbocker tossed in four points, and John Dunn, Sean

Peterson and Mike Killelea each had two.

Chelsea's shooting average was 42 percent, some six percentage points off their average. Milan, however, managed a percentage of just 35, and that was the difference in the game.

Other statistics were extremely close. Chelsea outrebounded Milan, 27-26, and committed 20 turnovers to Milan's 21.

Shot selection was the key to the Chelsea victory, Raymond said, especially against Milan's tough zone defense. He pointed to the players' experience as a factor in Chelsea's ability to wait and not take wild outside shots in desperation.

A difficult SEC game awaits the Bulldogs at Dexter this Friday night. Even though the Dreadnaughts are 2-5 in the league thus far, the traditional rivalry is a factor, said Coach Raymond, as is Dexter's small, dark gymnasium.

"It would be a big feather in their cap to beat the top dog," said Raymond.

A win against Dexter will set Chelsea up for the season-deciding contest with Saline, to be played here at home on Friday, Feb. 15.

Score by quarters

Chelsea	12	12	10	11-45
Milan	6	12	8	11-37

Aquatic Club Sinks Rival Milan

Last week, Chelsea's Aquatic Club defeated arch-rival Milan in a dual meet by a substantial margin, 270.5 to 249.5.

Because the meet was held on a Monday evening in Milan, many of the younger swimmers did not attend. The older swimmers had the task of pulling the team out of an early 50-point deficit to take the victory.

Wins for Chelsea included the medley relay team of John Cattell, Ted Lewis, David Karns and Kevan Flanigan. The medley relay team of Kris Mattoff, Tina Paddock, Paula Colombo and Becca Lee won, as did the two 13-14 medley relay teams composed of Sean Oxner, Dawn Fowler, Kevin Colombo and Kent Noll, and Margie Rawson, Kristin Thomas, Lisa Goltman and Liesel Culver.

Individual firsts were recorded by Molly Thompson, 25 back; Kris Mattoff, 50 back; Sean Oxner, 50 back; and Margie Rawson, 50 back.

Other relay victories included the 11 and 12 girls relay of Jenny Cattell, Kris Mattoff, Paula Colombo and Becca Lee; the 13 and 14 boys relay of Kevin Colombo, Greg Bos, Kent Noll and Sean Oxner; and the 13 and 14 girls relay of Kris Thomas, Marge Rawson, Liesel Culver and Lisa Goltman.

Highlighting the team victories recently have been the efforts put forth by the 9-10 age group.

In the boys division, John Cattell, Ted Lewis, David Karns and Kevan Flanigan have been busy setting records. To complement their efforts, the girls have also set their share of records.

Among record-setters were the relay team composed of Cathy Hoffman, Monique Parson, Heather Seabury, Sarah Weis, Jenny Pichlik and Laura Stephens.

The club's next meet is at home Saturday, Feb. 16 against the Ypsilanti Swim Club.

Chelsea Lumber Reports B&E, Cash Theft

Chelsea Lumber Co. was robbed of about \$20 in small change from a cash box sometime between 5:45 and 9:45 p.m. on Monday, Feb. 4.

According to police reports, an employee of the lumber company reported finding the money gone when he arrived at the building about 9:45 p.m.

Police said a 15"x36" window had been smashed, affording en-

(Continued on page four)

Rehearsals Underway For Musical

Rehearsals have begun at Chelsea High school for the production of the spring musical, "Carousel."

The Rodgers and Hammerstein favorite will be presented on the CHS stage the weekend of March 13-14-15, with performances at 8 p.m. nightly.

Principal cast members include Paula Haist as Julie, Mark Stevenson as Billy, Sally Vaught as Carrie, Mary Bort as Nettie, Brian Kruger as Mr. Snow and Celeste Arbogast as Mrs. Mullin.

Sharon Residents Worry About Water Contamination

Residents of a small slice of Sharon township continue to regard the water in their wells with suspicion this week, after samples taken to determine the presence of toxic chemicals in the wells yielded no conclusive results. Further tests have been ordered.

Hashley Rd. residents learned last week that toxic wastes are believed to have been dumped in

to a swampy area off the road near Grass Lake Rd. last August.

An Ann Arbor firm, Sycor, Inc., last Wednesday stood mute in Ann Arbor's 14th District Court to a criminal charge of contracting with an unlicensed person to remove liquid industrial wastes.

After a four-month Department of Natural Resources investigation, initiated after a report was received from a person living in

the area, barrels allegedly containing the chemicals were located on Hashley Rd. property owned by John Culp. Culp has not been charged with any wrongdoing by the prosecutor's office.

Sycor, Inc. maintains that the barrels contained sludge oil from industrial machines and not waste chemicals, but DNR reports that an analysis of their contents revealed toxic wastes. DNR said the chemicals were used by Sycor as cleansing solvents in the manufacture of computer terminals.

Meanwhile, worried Hashley Rd. residents have been contacting DNR and the Washtenaw County Environmental Health Department for instructions regarding the water in their wells, which may have been affected.

According to Barry Johnson of the county Health Department, samples were taken from five wells in the area last week to determine whether chemicals had leaked into the water table serving them. As of late Tuesday

(Continued on page eight)

Winter Carnival Set at High School

The week of Feb. 11-14 has been designated as this year's Winter Carnival at Chelsea High school.

Activities begin Tuesday with Hat Day and Teacher Appreciation Day. Students should wear hats and bring in something for the teachers they appreciate.

Wednesday is Salinian Day. Students should dress like a student from Saline High school.

Thursday has been named Red and White Day. Students will be decorating the halls under the theme, "Hearts and Hornets." Cash prizes will be given for the best decorated hall.

Each fifth hour class will be decorating posters to go in the gym during the pep rally during

sixth hour. The top three classes making the best posters will receive prizes.

During the pep rally, there will be a three-legged basketball game, teachers versus students. At half-time, of this basketball game, there will be spirit skits and poster contest winners will be announced. Also, the most appreciated teacher will be recognized.

Student Council hopes that everyone will participate in these activities.

Thursday night the seniors will hold a Valentine Dance, and Friday night, Chelsea looks for a victory over Saline.

Chelsea Symphony Plans Mexican Fiesta

Chelsea High School Symphony Band is holding a Mexican Fiesta Dinner Dance, Saturday, Feb. 9. The evening begins at 7 p.m. with a meal prepared and served by Symphony Band members. The dinner begins with an appetizer of french onion soup and tossed green salad, followed by the main course. This portion of the dinner consists of juicy roast beef, mashed potatoes and gravy, green beans, and roll and butter. For dessert, a cart of delectable treats will be available. Then, at 9 p.m., members of the Chelsea High Jazz Band will provide music from the Big Band era for patrons dancing and listening pleasure. At midnight, a Mexican sweet will be served.

The Dinner Dance will be held at the UAW Local 1284 Hall, on M-52, south of I-94. Tickets are now available at Chelsea Pharmacy, Gambles, Chelsea State Bank and Ann Arbor Trust Co.

This is just one of many fundraising events sponsored by the Chelsea Symphony Band. The band is raising money this year to go to Mexico City this May, where they will represent the state of Michigan in an International Festival. All proceeds will go towards the band's Mexico Project.



FINAL PREPARATIONS: Chelsea Symphony Band's Mexican Fiesta Dinner Committee heads review final plans for the fundraising dinner to be held this Saturday, Feb. 9 at

the UAW Hall on M-52. Committee heads include, from left, Sally Vaught, Jeanette Morrison, Cindy Wolters, Julie Botstford, Alicia Noah, Cindy Snyder and Sue Schafer.



RETIRING RESTAURANT CREW: Ella McMillan, right, will rustle up her last meal for Chelseaites Saturday, as she retires and closes The Chelsea Restaurant, her domain for 25

years. Helping "Grandma" celebrate the final day will be long-time employees, from left, Kay Ellenwood, Dorothy Shreider, Alice Burchett and Mary Erskine.

ROUNDTABLE FUTURE DIMS:

'Grandma' Retiring Even Though She's Not Yet 80!

Once upon a time in Chelsea there was a round table around which people ate, complained, talked, rejoiced and, in general, went about the business of solving the problems of the world.

That once upon a time has been the past 25 years at 119 Main St., where Ella McMillan's restaurant has provided a forum for all shapes and sizes of Chelseaites, as they lunched and dined, served themselves another cup of coffee and transacted every imaginable type of business.

Saturday, Feb. 9, marks the end of that quarter-century-long era in which the Chelsea Restaurant dominated Main St. as the place to eat. Mrs. McMillan, only two months away from her 80th birthday, has decided to retire as of this Saturday and close the restaurant.

It was an enterprise that began in the 1950's when Ella and John McMillan moved from Ann Arbor

to Chelsea and bought an eatery in the building that now houses Frisinger Realty. Less than a year later, they moved into the restaurant's present location, which had been vacated by the Chelsea Kroger grocery store.

Originally from Ironwood, where John was a cook in logging camps and Ella was a housewife, the McMillans first came south to Ann Arbor during World War II, when jobs in defense plants were plentiful. After the war, they made their move to Chelsea and entered the restaurant business.

John McMillan died in 1964 and Mrs. McMillan has been sole proprietor ever since, running the place with efficiency and skill, while maintaining a friendly, small-town atmosphere.

"We have fed the same people for 25 years," recalls Mrs. Noel Laraway, Mrs. McMillan's daughter. "They're like family. We fed the first generation and

now we're feeding children and even grandchildren."

There is a good chance, however, says Mrs. Laraway, that a restaurant will still operate in the building even though Mrs. McMillan won't be running it. The former owners of Saline's Dairy Queen restaurant are very interested in buying, she said, and are now attempting to finalize the transaction.

If everything falls neatly into place, the new owners plan to reopen sometime in March, Mrs. Laraway said.

Happily, she reported, the prospective owners have expressed their plans to make no major changes in the operation of the restaurant, although she is not sure that the round table will stay. Mrs. Laraway also wondered whether the customers will easily adjust to a new owner.

"We've spoiled the customers so completely," she laughed. (Continued on page four)



Published every Thursday morning at 300 North Main Street, Chelsea, Mich. 48118, and second class postage paid at Chelsea, Mich., under the Act of March 3, 1879.

Subscription Rates (Payable in Advance)

In Michigan:		Outside Michigan:	
Six Months	\$4.50	Six Months	\$ 5.50
One Year	\$8.00	One Year	\$10.50
Single Copies	\$.25	Single Copies	\$.30

MEMBER
NATIONAL PAPER ASSOCIATION
National Advertising Representative:
MICHIGAN NEWSPAPERS, INC.
257 Michigan Ave.
East Lansing, Mich. 48823

JUST REMINISCING

Items taken from the files of The Chelsea Standard

4 Years Ago . . .

Thursday, Feb. 12, 1976—

Those children who attend South school can expect next fall to return to a beautiful new playground, made possible last week by the school's second "Fun Fair," which raised some \$1,200.

VFW Post 4076 presented medals to Ellen Straub, Gail Gilbreath and Sue Barlow as the top three winners of the local "Voice of Democracy" script-writing contest.

Elizabeth Belsler, daughter of Mr. and Mrs. Frederick Belsler of 216 Park St., will spend the fall and winter semesters of her junior year in Munster, Germany in a program sponsored there by Kalamazoo College.

Sun-tanned Chelseaites will have an opportunity to compare their relative shades of brown Sunday, Feb. 29, when once again, Chelsea Day is held in Florida.

14 Years Ago . . .

Thursday, Feb. 17, 1966—

After nearly 18 years as the owner and administrator of the Colonial Manor Nursing Home, 236 E. Middle St., Mrs. Nellie Flood has announced her retirement. The new administrator, Mrs. Paul Fackler of Detroit, officially assumed duties at the home on Feb. 1.

Area residents are invited to attend a star-studded band concert Sunday afternoon at Chelsea High school featuring two famous college band directors, three outstanding guest soloists and top instrumentalists from 65 Michigan schools.

Members of UAW-CIO Local 1284, Chrysler Proving Grounds division, voted Saturday, 88-40, to ratify a package agreement presented by the union bargaining committee, and to thus avert a strike.

Submarine detection was the subject of a program by Don Donkin, project engineer for Sparton Electronics Division in Jackson, when he spoke before the Chelsea Kiwanis Club Monday evening.

Howell Livestock Auction

Starts 1 p.m. Every Monday
Mason 676-5400

The Wise Owl Says Ship to Howell
Ph. (313) 348-3500 Bill Franklin

Hog Sale every Wed'y 9 a.m.
Market Report for Feb. 4

CATTLE

Bulk Gd.-Choice Steers, \$66 to \$68
Fw High Choice Steers, \$68 to \$69
Gd.-Choice Heifers, \$63 to \$66.50
Fed Holstein Steers, \$58 to \$63
Dt.-Std., \$57 and down.

COWS

Heifer Cows, \$59 to \$61
U1-Commercial, \$51 to \$59
Canner-Cutter, \$45 to \$55
Fat Beef Cows, \$51 to \$55

BULLS

Heavy Bologna, \$60 to \$70
Light and Common, \$59 and down.

FEEDERS

400-600 lb. Good-Choice Steers, \$80 to \$85
600-800 lb. Good-Choice Steers, \$65 to \$75
300-600 lb. Good-Choice Heifers, \$65 to \$75
300-500 lb. Holstein Steers, \$70 to \$75
500-800 lb. Holstein Steers, \$58 to \$65

CALVES

Prime, \$100 to \$114
Good-Choice, \$90 to \$100
Heavy Deacons, \$80 to \$110
Cull & Med., \$45 to \$80
Calves going back to the farm sold up to \$185

SHEEP

Choice-Prime, \$64 to \$65
Good-Utility, \$60 to \$64
Slaughter Ewes, \$18 to \$33.50
Feeder Lambs, all weights, \$70-\$75

HOGS (quotable)

210 to 240 lbs., No. 1, \$38.50-\$39.25
200-250 lbs., No. 2, \$37 to \$39
Heavy Hogs, 250 lbs. up, \$33 to \$35
Light Hogs, 200 lbs. down, \$28-\$34

Sows (quotable)

Fancy Light, \$32 to \$34
300-500 lbs., \$30 to \$34
500 lbs. and up, \$22 to \$35

Bears and Stags (quotable)

All Weights, \$25 to \$30

Feeder Pigs

Per Head, \$15 to \$35
Est. 40 lb. pigs, \$26 to \$30

HAY

1st Cutting, per bale, 15c to 70c
2nd Cutting, per bale, 40c to \$1.40

STRAW

Per Bale, 40c to 70c

COWS (quotable)

Tested Dairy Cows, \$700 to \$1,100
Tested Beef Type Cows, \$500-\$600

MICHIGAN MIRROR

By Warren M. Hoyt, Secretary, Michigan Press Association

Tax Cut Proposal May Appear On November Ballot

The real test as to whether the citizens of the state of Michigan are satisfied with the Headlee tax limitation amendment of 1978 will be their reaction to a new proposal amendment to cut property taxes by 60 percent.

Michigan voters chose the tax limitation approach to halt governmental growth and spending during the 1978 general election rather than the unknown radical tax cut proposal.

It was also believed at the time, that if the tax limitation amendment did not do the job and halt government spending, the tax cut proposal would be back before the voters.

This appears to be the case with a new effort to get that pro-

posal back before the voters in November.

Shlawassee County Drain Commissioner Robert Tisch, author of the previous proposal, is at it again and has started circulating petitions to get the proposal on the ballot.

The proposed amendment would cut local property taxes by about \$1.6 billion and require the state to reimburse schools and local governments for most of that loss.

The proposal would cut property tax assessments by 50 percent to provide further tax exemptions for persons over age 62, prohibit new taxes on homes, limit increases in annual property assessments on homes and agricultural property to 2.5 percent and require a vote in a

general election to impose new or increased taxes.

The state would be required to reimburse local units for all revenue loss except on taxes levied to pay building project bonds.

In announcing the petition drive, Tisch said the proposal would not require local governments to cut their operations as local taxes are cut because people are upset with the legislature while having confidence in local government.

Tisch predicted his plan will gain more support because people are tired of big government, high taxes and government's view that it must always provide expensive new programs.

Other parts of the proposal include retaining all tax credit and rebate programs currently in tax law, setting taxes on new residential construction as if they had been built in 1978, plus inflation, and exempting from property taxes the homesteads and rental hous-

ings of persons with taxable income of under \$5,000.

Rep. Roy Smith (R-Ypsilanti), a member of the legislature proposing a tax shift from property taxes in income taxes, said a problem with the new Tisch plan is the exemption from any new taxes on homes built after the amendment is adopted. He said the amendment appears to permit taxing only the land upon which the residence would sit.

To get the amendment on the ballot, about 286,700 valid signatures are needed. Tisch said he hopes to collect over half a million signatures before presenting the petitions.

Free Tuition for Senior Citizens
Final legislative approval has been given to a bill permitting governing boards of community

Uncle Lew from Lima Says:

DEAR MISTER EDITOR:

You don't have to pay some on your heating bill or watch the 6'clock weather across the country to know we're in the dead of winter. All you got to do is run in to Ed Doolittle. He's got his usual case of the after holiday blahs, or the February mulligrubs, and he brings it with him to the session at the country store Saturday night.

He was looking down in the mouth from a chest cold and he was bad mouthing everthing more than anything else.

First off, Ed jumped on federal revenue sharing that he called addition for local governments and a hairbrained go-fer-broke skeme for the Federal Government. He said he saw where this giveaway is going to wind down this year like it has twice before, and the grassroots already is rumbling to crank it up again.

Outfits called task forces are being formed by counties and towns, Ed reported, and their task is to put the bee on their Congressmen for more of that manna from Washington. According to this clipping Ed brought to the session and waved before the fellers, The Federal Government has shared \$55.2 billion with states, counties and towns. While this has been going on since 1972, Ed allowed, Congress has upped the National Debt limit four times, and the government that has been so generous has run in the red eight times to the tune of so many billions the numbers don't mean nothing to anybody any more.

Actual, Ed declared, the idee of gitting back some of the money we send to Washington allus has been a dream, and revenue sharing is a dream come true. So there's no reason to expect anybody on the gitting end to raise much fuss about it, was his words. It's just another turn in the road we've been racing on ever since FDR cooked up his Robin Hood New Deal of stealing from everbody and giving a little to the poor, declared Republican Ed.

Clem Webster was quick to jump right back at Ed, mulligrubs and all. Clem said he was sick of hearing all the government is doing, when all it's doing is what the elected people in it are convinced the people that elected em wants em to do.

Mayors and county leaders are doing the same thing in pushing for more money from anywhere except from the people that elected them. The more money from Washington to pay the town bills, the more voting from folks in town, is their thinking, Clem ex-

plained. Clem recalled that when President Carter was Jimmy Who he was of a mind that revenue sharing was crazy. Now that he is President and wants to keep his job, the program makes sense, Clem said, special after that convention of mayors and governors told him last month that their loss of revenue sharing money would mean his loss of their backing.

General speaking, the fellers voted with Clem. Zeke Grubb said all the Congressmen that did any testing of waters back home during the holidays is coming around to President Carter's way of thinking. They figger they are doing the will of their people, Zeke said. Ed had a long list of things he wanted to complain about, Mister Editor, but closing time caught him.

Yours truly,
Uncle Lew.

Special Olympians Post Two Basketball Wins

Chelsea's Special Olympians scored two victories last week in basketball play, as they defeated High Point, 52-44, and Dearborn Howe, 28-10.

High scorer for Chelsea against High Point was center Tracey Harvey with 34 points. Terry Walkowe contributed eight, Dennis Czechowski four, Mike Goebel four and Glenn Passow two.

"Tracey was just fabulous," praised Coach Nancy Cooper. "He just couldn't miss a shot."

Leading scorer for High Point was Mike Benzinger with 24, followed by Ken Bartsus with 18,

and Tony Vysocil and John Taylor with two each.

Chelsea and High Point have a long standing rivalry, so the day was even sweeter when the Chelsea swim team also defeated their rivals the same day.

Chelsea players were eager for a victory over Dearborn Howe last Friday, having lost to them last year.

Even without the help of Dennis Czechowski, sidelined with an injury, Chelsea managed to take the victory, 28-10. Tracey Harvey had 12 points, Glenn Passow 6, and Terry Walkowe and Mike Goebel, four each.

Playing excellent defense for Chelsea were Tim Black, Clarence Weiss and Mike Foster. Also contributing were Albert Bedard, Ryan Sweeny and Peter Worden.

The Special Olympians now have a 4-0 record and are looking forward to playing Dexter at home this Friday, Feb. 8.

Coaching the Chelsea team are Nancy Cooper and Judy Bottum.

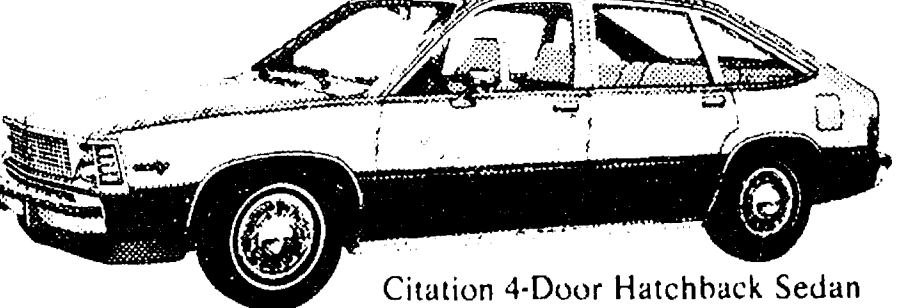
Please Notify Us
In Advance of
Any Change in Address

**DON'T MISS THE ANNUAL
KIWANIS SALE**
Thurs., Fri., Sat., Feb. 7-8-9
10 a.m. 12 Noon 10 a.m.
to 8 p.m. to 8 p.m. to 2 p.m.
at the **KIWANIS ACTIVITIES CENTER**
Corner of W. Washington and First Sts., Ann Arbor
3 Floors of Furniture, Clothing, Books, Shoes, Toys,
Hardware, Bicycles, White Goods, etc.

**LLOYD BRIDGES
LEADS THE WAY
FOR ECONOMICAL
TRANSPORTATION**

Motor Trend Car of the Year:

**1980
CHEVY
CITATION**



Citation 4-Door Hatchback Sedan

FRONT WHEEL DRIVE - SAFETY & ECONOMY

EPA Highway Rated 38 miles per gallon

with 2.5 liter engine and 4-speed transmission

DRIVE THE CAR OF THE 80's TODAY!

Many models and colors in stock to choose from.

COME IN TODAY AND TAKE A DEMONSTRATION RIDE

IN AMERICA'S MOST POPULAR AUTOMOBILE.

Parts & Service Dept.
Open Mon. thru Fri.
at 7 a.m.
For Your Convenience

**EXPERT PAINT
AND BODY REPAIRS
FREE ESTIMATES**



SALES HOURS: Mon. thru Thurs., 8 a.m. to 8:30 p.m. Fri., 8 a.m. to 6 p.m., Sat., 8 a.m.-5 p.m.

**LLOYD BRIDGES
CHEVROLET**



"For Quality, Service and Price
Travel with Lloyd"

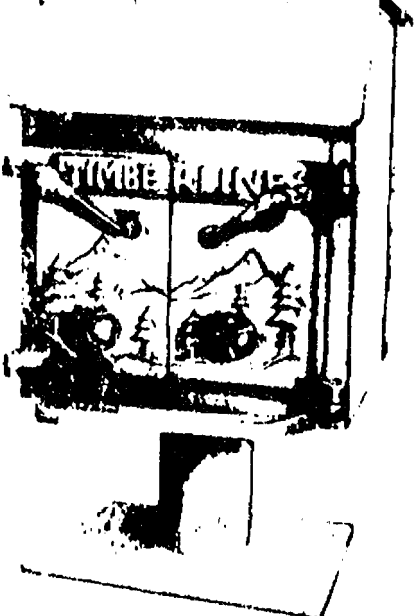


I-94 and M-52, Chelsea

Phone 475-1373

**Stop By and See Our
Complete Line of
TIMBERLINE STOVES**

Michigan made stoves are unsurpassed in efficiency, and craftsmanship. Constructed of heavy 1/4" steel plate and cast iron.



**Save Money
and Energy -
HEAT WITH
WOOD!**

LIFETIME GUARANTEE

**ASCCO ALL-SEASON
COMFORT CO.**

Now Open 8 a.m. to 5 p.m. Mon. thru Sat.
Heating, Air Conditioning & Custom Sheet Metal Work
115 W. MIDDLE ST.
CHELSEA, MICH. 48118 (313) 475-7617

CHS Musicians Compete Well in District Festival



TOP SOLOISTS: Ten Chelsea band and orchestra members earned top I ratings at the district solo and ensemble festival held in Livonia last week-end. Taking honors, were, from left, Cindy Wolter, Lisa Hurd, Zac Smith, Drew Sprague, Sarah Ullman, Duane Robbins, Eric Weidmeyer, Pat Powers and Kim Boyd. Not pictured is Dave Cooley, tenor sax.

Chelsea High school musicians traveled last Saturday to Livonia Franklin High school where they competed with 65 schools in the Michigan School Band and Orchestra Association's Solo and Ensemble Festival.

Chelsea returned home with 18 I, or top, ratings, 11 II ratings and 2 III ratings.

Performing well at the festival were the following:

SOLO—
I Ratings: Kim Boyd, alto sax; Duane Robbins, trombone; Dave Cooley, tenor sax; Pat Powers, trombone; Drew Sprague, trumpet; Lisa Hurd, flute; Eric Weidmeyer, trombone; Cindy Wolter, flute; Zac Smith, trumpet; Sarah Ullman, cello; and Pat Killelea, piano.

II Ratings: Melanie Lee, oboe; Brent Martin, trombone; Ann O'Hagen, flute; Debbie Koepele, trumpet; Marie Sullivan, clarinet; Faith Markie, violin and viola; Katie Ullman, violin; and Dan Kiemer, snare drum.

III Ratings: Margaret Merkel, piano, and Chris Kvarnberg, piano.

ENSEMBLE—

I Ratings: Jim Herter and Zac Smith, trumpet duet; Jeanne Bury, Julie Botsford, Mary Anderson, clarinet trio; Pat Powers, Eric Weidmeyer, trombone duet; Lisa Hurd, Melanie Lee, Carolyn Chandler, Marie Sullivan, Pearl Phillips, woodwind quintet; Alicia Noah, Pat Powers, alto sax duet; Julie Botsford, Gayle Beyer, Donna Finkbeiner, Cinda Thornton, Kris Kvarnberg, woodwind quintet; Jennette Morrison, Theresa Merkel, Donna Finkbeiner, flute trio.

II Ratings: Chuck Dalton, Dave Cooley, Kim Boyd, Dan Klies, sax quartet; Paula Beaudoin and Shari Weber, violin-violin; Jeff Koepele, Robbie Friday, Susan Bareis, Chris Hall,

string quartet; Amy Ziegler, Trina Mindacowski, Anna Bennett, Jennifer Gibb, clarinet quartet; Amy Ziegler, Kathy Dagner, flute-clarinet duet; Robert Benedict, Duane Robbins, trombone duet; Brian Koepele, Sue Prinzling, Becky Watson, Tim Dmoch, Thad Bell, brass quintet; Jim Herter, Debbie Koepele, trumpet duet.

III Ratings: Brent Martin, Thad Bell, Chris Martin, Tim Dmoch, Jeff Halst, Pat Killelea, brass sextet; Karen Miller, Duane Branch, Mark Smith, saxophone quartet.



ENSEMBLE STARS: A number of Chelsea musicians lent their talents to the district solo and ensemble festival in Livonia last week-end, and came away with top ratings of I. Among the top rated band and orchestra members were Jim Herter, Zac Smith, Jeanne Bury, Julie Botsford, Mary Anderson, Pat Powers, Eric Weidmeyer, Lisa Hurd, Melanie Lee, Carolyn Chandler, Marie Sullivan, Pearl Phillips, Alicia Noah, Gayle Beyer, Donna Finkbeiner, Cinda Thornton, Chris Kvarnberg, Jeanette Morrison and Theresa Merkel.

Homemakers Club Will Hear Police Talk on Crime

Homemakers Club held its January meeting at the home of Sharon Roehm. It was hostess fun night, and, following the meeting, everyone played a progressive dice game. There were three winners for the evening.

After the games, refreshments were served by Georgia Myers and Sharon Roehm.

The February meeting will be held at Lima Township Hall, where Manchester Chief of Police William Zsenyak will speak on crime and drugs in Washtenaw county.

Members may bring husbands, but are asked to contact one of the co-hostesses in order that adequate refreshments may be prepared.

Resume Writing Course Offered

Washtenaw Community College will offer a special three-hour session in creative resume writing for interested members of the community on Saturday morning, Feb. 9 from 9 a.m. until noon.

George Vrabel, placement officer at the College and instructor for the session, explains that participants will learn to prepare a professional resume. He urges those enrolled to bring pertinent information to the class where instruction will be provided in refining this information "for the ideal position."

The session will be offered at the Ypsilanti Center of the College at 210 W. Cross, Room 304. A \$15 fee will be charged. As with all programs offered by the College, in-district senior citizens are invited to participate at no charge as part of the College's Emeritus Program.

Advanced registration is requested by phoning WCC staff at (313) 482-2230.

CAROL'S CUTS

40 CHESTNUT

Monday, Wednesday and Friday

475-7094

Appts. Only

9:30 a.m. - 3:00 p.m.



Classic Sculpture

The simple, sculptured lines of this solitaire diamond set in precious 14K gold beautifully symbolize the years of an enduring love.

Wedding Bells

FROM \$275

In yellow or white gold. Matching wedding ring available.

WINANS JEWELRY

Ring and Diamond enlarged to show detail

© 1979 REESE CORPORATION - Ring and Ad Format Copyrighted

EVERYTHING ON SALE



SAVE 10% to 50%

All the beautiful new home furnishings you really want . . . at prices to make your checkbook smile. Our home furnishings department store has everything you need for a beautiful new look and free interior design consultations to help you put it all together. Paint and wallcoverings, over 4,000 carpets, custom draperies, Solarian floors, Bruce hardwood floors, Sofas, loveseats and chairs by Henredon, Franklin, Conover and Marimont. Hundreds of bargains.

HURRY! SALE ENDS FEBRUARY 16

If you don't find your heart's desire in stock we'll gladly special order at savings of 10% to 20%.

PHONE 475-8621 or toll-free 1-800-482-3650

Merkel
FURNITURE & CARPET
MAIN STREET IN CHELSEA
OPEN MONDAY, THURSDAY AND FRIDAY UNTIL 9

Subscribe today to The Standard.

Celebrate Valentine's Day!

Colorful partyware from Hallmark helps you celebrate Valentine's Day, Feb. 14!



© 1980 Hallmark Cards, Inc.

Sale
CAROLINA VOTIVE CANDLES
1 Cent Sale

1st at 50c
2nd at 1c

Dayspring Gifts
116 S. Main
Chelsea
475-7501

CLEARANCE SALE



Channel Master

Cassette Stereo System



Super Star Sound!

Model 6867
\$289.95

ON SALE AT

\$225.00

Only 8 to sell!

With Free Component Cart. \$29.95 Value.

HEYDLAUFF'S

113 N. Main St., Chelsea

Ph. 475-1221

LIVE LONGER!

Skim Milk for Extra Protein

By LELORD KORDEL
Number Six of a Series

Milk, in a new form, has joined the ranks of concentrated protective foods.

I refer to dry skim milk—an inexpensive, readily digested, high-protein food.

A hard to believe fact is that the highly-concentrated protein, calcium and riboflavin in dry skim milk can help prolong your "prime of life," and aid you in retaining youthfulness.

The addition of even so little as a tablespoonful of powdered skim milk to daily servings of food would be a worthwhile contribution to your Live Longer program.

Less than one-half cup of powdered skim milk contains all the nutrients found in a quart of fresh skim milk.

There is a popularly held belief that "richer milk is better milk." Nothing could be farther from the truth.

The protein, minerals and riboflavin are all contained in the skim milk, not in the cream.

An analysis of skim milk powder shows it to be approximately 8 percent minerals. This is a remarkably high concentration—since most foods contain less than 1 percent of these important cell nutrients.

If you want to gain weight, dry skim milk, used liberally, will provide extra amounts of the protein, minerals and vitamins. It was the lack of these which may have caused your underweight in the first place.

WEIGHT CONTROL

If overweight is your problem, and yours should be a reducing diet, dry skim milk is equally good. Liberal amounts can be used without making your calorie count jump up like the thermometer on a hot day.

Moreover, the highly concentrated protein in skim milk is a valuable aid to a high-protein reducing diet.

Keep in mind: the more protein you eat without adding calories, the more quickly your sluggish thyroid gland can be prodded into taking over. This is important in bringing body weight back to normal.

Right now powdered skim milk is the biggest food bar-

gain of all. You can slice your milk bill considerably with powdered skim milk. As well as supplementing your diet with the valuable proteins and vitamins and minerals found in this wonderful food.

If you wish to economize and simplify your marketing, you may omit buying fresh milk altogether. Just stock your cupboard with the inexpensive, long-keeping skim milk powder.

It can be made into liquid milk with a few flips of the eggbeater or wire whisk—by merely adding it to cold water.

And best of all—this reconstructed liquid milk—(that you yourself make from skim milk powder)—can be diluted or as "rich" as you wish.

So concentrated is this fine food that it contains eleven times more high-grade protein, minerals, B-vitamins and lactose than fresh whole milk.

This means that eleven pounds of fresh liquid milk are used to prepare one pound of dry skim milk.

Powdered skim milk is 36.5 percent protein, as compared to 19.7 percent protein found in an equal weight of lean beef.

LOW COST PROTEIN

Where else could you get so much concentrated pure protein at so low a cost?

If you want an extra-juicy, extra-plump, and extra-rich broiled hamburger soon, just add a couple of tablespoons of skim milk powder to the mixture.

Dry skim milk is also a particularly rich source of the youth-promoting B-complex vitamins—and in natural balance.

Skim milk is rich in lactose, a "youth-promoter" which provides a quick, readily usable source of energy. Especially for older bodies that need every iota of energy they can muster to counteract a slowing down of nervous system and vital organs.

Like other high-protein foods, milk contains factors of great importance to the human organs of reproduction.

We know that protein exerts an important influence on the



continued youthfulness of the sex glands in men and women alike.

A British scientist advocated not long ago that all married couples, whatever their ages, should look to their diets, if they wished to achieve a congenial marital partnership. The quarrelsome mate is quite likely to be one whose nerves are starved for protein.

MARITAL HARMONY

This thought-provoking fact is brought before you at this point because it has long been my belief the the lopsided, artificial, woefully devitalized diets of a great majority of families create the real causes underlying so much unhappy married life.

The love and harmony of marriage are severely strained by "on-edge" nerves—often caused by poor nutrition.

Certainly I don't want to give the impression that powdered skim milk is going to cure all the ills of your marriage.

But, I do want you to consider the logic of safeguarding personal happiness by making certain that your nervous system is well fortified by protective foods. This can help you retain youthfulness a lot longer.

Is there a real need for dried skim milk? With more than half of the people losing their youth before they are forty, I should say there is.

Distributed by Specialty Features Syndicate. All Rights Reserved. Condensed from the book "Eat Right and Live Longer" by Lelord Kordel.

Next: How sugars and starches can turn into killers, causing heart ailments and other degenerative ills.

Dave Waldyke Wins State Math Award

Chelsea High school senior Dave Waldyke, son of Dr. and Mrs. Jerry Waldyke of Chandler St., has been named an award winner by the Michigan Section of the Mathematical Association of America, for placing in the top 100 of more than 23,000 high school students participating in the 23rd Annual Michigan Mathematics Prize Competition.

Waldyke will be honored at an awards program to be held in Mt. Pleasant at Central Michigan University on Saturday, Feb. 16. The program will feature presentations by Dr. Lorraine Denby of Bell Laboratories, speaking on "Paint by Numbers," and Dr. Doris Schattschneider of Moravian College, who will talk on "Extending the Art of M.C. Escher."

College scholarships will be awarded to more than 40 of the winners at the awards banquet.

Ken Larson, Mathematics Department chairman, has served as the high school supervisor for Chelsea students participating in the competition.



BAND CHECK: An in-club auction held by the Chelsea Child Study Club provided the sum of \$122.25, donated this week to the Symphony Band for its May trip to Mexico City. Neta Mills,

center, club president, presented the funds to Gay Dalton, Band and Orchestra Boosters president, right. Looking on is Betty Cox, program chairman of the Child Study Club.

Dan Robbins Addresses Saline Rotary

Dan Robbins, former Chelseaite and past-president of the Michigan United Conservation Clubs, was guest speaker at the Rotarians Luncheon in Saline last Thursday, where his comments on the state of MUCC were greeted favorably.

Although a resident of Jackson, Robbins still maintains a Chelsea phone number through which local residents can reach him with questions on any conservation topic.

In his speech to the Rotarians, Robbins discussed a "Save the Fish" rally in Lansing that concerned itself with gillnetting, oil spills, and major sources of pollution.

On the Michigan Bottle Bill, which resulted from a MUCC petition drive launched when Robbins was president of the organization, he cited the dramatic evidence of its impact in reducing litter along state roadways and saving energy through recycling of containers.

He concluded with the thought that Michigan residents will have to face problems that cannot yet be foreseen, and that the MUCC will be in the forefront of solutions using techniques not yet developed.

GIRL SCOUTS

TROOP 247—

We made Valentines for the Whitmore Lake Nursing Home at our last meeting. We played Duck-Duck-Goose and talked about our roller skating party at World of Wheels on Feb. 6. Christina Hughs brought treats. Christina Hughs, scribe.

Break-in

(Continued from page one) try to the building. A door on the north side of the building had also been forced and the door casing smashed. Police have no suspects.

Pinckney Youth Completes Air Force Course

Airman Ryan L. Krahn, son of Mary Krahn of 220 Park St., Pinckney, has graduated from the U. S. Air Force aircraft ground equipment course at Chanute Air Force Base, Rantoul, Ill.

The Community College of the Air Force.

Airman Krahn learned how to repair generators, gas turbines, and hydraulic pumping equipment. He is being assigned to Osan Air Force Base, South Korea.

The airman is a 1979 graduate of Pinckney Community High school.

Tax, Heating Rebate Help For Seniors

A program to assist seniors, home owners or renters, to file for Michigan Property Tax Relief and home heating credit is offered by the Washtenaw County Council on Aging, W. de St. Aubin, project chairman announced today. This free service, available to county residents who are 65 years and over, will be given by volunteer tax counselors who have received special training from the Michigan department of the Treasury.

Some residents can receive up to \$1,200 in rebate on property tax. W. de St. Aubin pointed out that to obtain a speaker to acquaint seniors with the benefits of the Act of 1973, or other information, call 665-3825, the Council on Aging office.

It is necessary to file a claim to obtain a tax refund or home heating credit. It is suggested that meetings be scheduled at senior centers, churches, public buildings and that a speaker be requested. It confined to their home, individual visits can usually be arranged. According to St. Aubin, during the last five years in Washtenaw county more than 5000 individuals received tax refunds totaling approximately 92 million.

NOW ON TUESDAY NIGHTS CHICKEN BUFFET

Thursday, Friday, Saturday open till 7
VISA
master charge
NOW SERVING COCKTAILS IN OUR NEW BAR

our Famous Deep-Fried Chicken and SPECIAL BARBECUED CHICKEN also mashed potatoes and gravy, dressing, and salad bar. Serving from 4:30-9:30

at the CAPTAINS TABLE
8093 MAIN ST., DEXTER PH. 426-3811

Dial-A-Garden

Dial-A-Garden, the system of pre-recorded daily gardening tips, is sponsored by the Washtenaw County Co-operative Extension Service. The system is in operation 24 hours per day, seven days per week. Interested persons are invited to call 971-1122 at their convenience and receive timely, up-to-date gardening information.

'Grandma' Retiring

(Continued from page one.) "The customers have trained us to the point where they tell us what, where and when. Someone can come in and hold up two fingers or just smile and we know what they want."

The round-table group has become well-known over the

years, but another, not-so-famous square-table group formed just a few years ago, Mrs. Laraway said. In contrast to the mostly-male round-tablers, the square-tablers are a group of women who began to meet regularly and debate the state of the world from their own point of view.

Their presence changed the rather masculine atmosphere of the restaurant. "Once a woman came in and asked it if was a restaurant for men only," Mrs. Laraway recalled with a laugh.

As for Mrs. McMillan herself, Mrs. Laraway feels that she may get involved with Chelsea Senior Citizens. "Besides," Mrs. Laraway added, "she's got enough grandchildren and great-grandchildren to keep her busy."

According to Mrs. Laraway, "Grandma" McMillan "really felt bad to know there wouldn't be a place for people to go in the mornings," but Village Bakery has agreed to open at 5:30 a.m. to feed hungry souls looking for breakfast.

Even with Mrs. McMillan no longer at the helm, a sense of some continuity will be preserved if the restaurant does reopen soon. Mrs. Laraway feels that a place with the atmosphere of the Chelsea Restaurant is an absolute necessity in the village. "We're a hasher joint," she said with affection, "and we'll never be anything else."

STOLEN CARS RECOVERED

Although more than 90 percent of all automobiles stolen in the United States are recovered, according to the Insurance Information Institute, about 30 percent of the recovered cars have been damaged or stripped of parts—many to the extent that they represent total losses.

8080 Carpet Cleaning

Happy Valentine's Day! Here's a wet weather suggestion for cleaning. We recommend Host, the new method of cleaning carpets with out water. The carpet is dry and ready to walk on immedately. Use our Host Electric Up-Brush. It's easy. Clean 40 sq. yds. only \$9.95. Phone for information.

MERKEL BROTHERS

You Read It First in The Standard!

ESTATE PROTECTOR
FOR YOUR ESTATE FROM FARM BUREAU LIFE

DAVE ROWE
107 1/2 S. Main, Chelsea, Mich. 48118
(313) 475-9184

You can make your estate work effectively for you now and for your heirs later in these ways with Estate Protector:

- Avoid losses — Meet estate transfer costs — Avoid the need for cash — Pay estate liabilities — Help the executor.

Begin your estate planning now. Call your professional Farm Bureau Life agent and ask about Estate Protector.

FARM BUREAU INSURANCE GROUP

Hurry Up Spring WALLPAPER SALE

Save 15%-40%

Choose from over 5,000 beautiful patterns, textures, and designs — one perfect for every room in your home — Wall-Tex, Imperial, United, Astor, Josephson, Vicoa — all first quality wallcovering from America's leading manufacturers. EVERYTHING'S ON SALE!

Merkel
HOME FURNISHINGS
Open Mon., Wed. and Fri. Until 9 p.m.

LYNDON TOWNSHIP PLANNING COMMISSION PUBLIC HEARING

For a Conditional Use Permit to allow the operation of a private nursery and day care school located at 10200 Hadley Rd., Gregory, Mich. 48137.

The Public Hearing will be held at the next regularly scheduled Planning Commission meeting to be held February 14, 1980 at 8:00 p.m. at the Lyndon Townhall, N. Territorial and Townhall Rds.

LYNDON TOWNSHIP PLANNING COMMISSION
BARBARA RÖDERICK, SECRETARY

-NOTICE-
Lyndon Township Taxpayers

I will be at my home at 9508 Beeman Rd. to collect Lyndon Township taxes and issue dog licenses every Monday and Friday between 9:00 a.m. and 5:00 p.m. during December, January, and February, and at the Chelsea State Bank, Saturday, February 2 and 9 from 9:00 a.m. to 12:00 noon to accept payment of taxes and issue dog licenses.

Those who wish may send check or money order in payment of taxes and dog licenses. Enclose complete tax notice, and unexpired rabies certificates. Receipts will be returned by mail.

Please add one percent (1%) to taxes paid after February 15.

All dog licenses are \$4.00 and must be purchased from Lyndon Township treasurer before March 1, 1980 to avoid penalty. Unexpired rabies vaccination papers must be presented to obtain license.

BARBARA RÖDERICK
LYNDON TOWNSHIP TREASURER
9508 Beeman Rd., Chelsea, Mich. 48118



CAROUSEL: Rehearsals are now underway at Chelsea High school for this year's spring musical, Rogers and Hammerstein's "Carousel." Throwing themselves into the mood of a scene are, from left, Paula Beaudoin, Paula Halst, Monica Vanderward, Sally Vaught, Mary McCallum, Marcia Warren and Tracy Cattell. Kneeling in front is Kim Harvey.

Senior Citizen House Activities

Week of Feb. 11-15
 Monday—Cookie bake, 10 a.m. to 1 p.m.; Tour of Chelsea Hospital, 1:30 p.m.; Antique discussion group, 2 p.m.
 Tuesday—Cookie bake, 1 to 4 p.m.; cards, 1 to 4 p.m.; Travel committee, 1 to 3:30 p.m.
 Wednesday—Cookie bake, 1 to 4 p.m.; bowling, 1:30 p.m.; fitness, 1 p.m.
 Thursday—Valentine Cookie Sale, 1 to 4 p.m., all proceeds go for daily activities at the center; bridge, 1 p.m.; stained glass, 1:30 p.m.
 Friday—Pot-luck, 5:30 p.m.

Please Notify Us of Any Change in Address

Grow Your Own SPROUTS It's So Easy!

Brown Eggs - Guernsey Dairy Milk

Rivendell Natural Foods

3212 Alpine, Dexter Ph. 426-2549 (Across from the Farmers' Market)

Treva Huston, Kevin Barber Are Wed in Grass Lake Church

Treva Huston became the bride of Kevin Barber in a double-ring ceremony at Grass Lake Methodist church, Saturday, Jan. 26. The Rev. Kenneth Lindland performed the ceremony before 250 family members and guests. Treva is the daughter of Ray and Pat Huston of Grass Lake, formerly of Chelsea. Mr. Barber is the son of Neil and Susan Barber of Concord. The bride, given in marriage by her father, wore a long bridal gown of white Qiana, featuring a chapel-length train trimmed with lace. The close-fitting bodice had a low-cut square neckline with a high lace collar in the back. The gown was trimmed with lace and seed pearls and the long sleeves were edged with lace.

She also wore a fingertip-length veil of illusion, trimmed with lace and attached to a small cap. Her bouquet was made of white carnations and roses. Matron of honor was Mrs. Devra Keller of Jackson, sister of the bridegroom. She wore a floor-length dress of dark blue and carried a bouquet of dark blue and white carnations. Bridesmaids, friends of the bride, were Kathy Wright of Jackson, Dawn Findlay of Grass

Lake, Cindy Steffy of Michigan Center, and the bride's sister-in-law Sharon Huston of Loveland, Colo. All wore powder blue floor-length gowns and carried bouquets of light blue and white carnations. The bride's nieces, Stephanie and Sarah Huston of Loveland, Colo., were flower girls. They were accompanied by Paul Huston, nephew of the bride, as ring-bearer. The bridegroom was attired in white tails. His best man was his brother-in-law, Bill Keller of Jackson, who was dressed in dark blue tails. Groomsmen were Tom Broyles of Jackson, brother-in-law of the bridegroom; the bride's brother, Richard Huston of Loveland, Colo.; and friends Ron Fort and Jim Stokely, both of Parma. All wore powder blue tuxedos.

Mother of the bride chose a rose-colored floor-length gown with matching coat. Her outfit was completed with silver accessories and her flowers were rose-colored carnations and roses.

Mrs. Barber wore a long beige dress with a brown and beige floral-print coat and brown accessories. Her flowers were beige carnations and roses.

A reception followed the ceremony at the Sportsman's Club in Jackson. Mrs. Darlene Cozen and Mrs. Althea Hindle, both aunts of the bride, served the wedding cake and punch. Mrs. Tom Broyles of Jackson, sister of the bridegroom, was in charge of the guest book.

Mr. and Mrs. Donald Harris of Sugar Loaf Lake were in charge of the reception dinner. A rehearsal dinner was given at the Viking Restaurant in Jackson on Friday, Jan. 25, by Mr. and Mrs. Niels Barber.

The bride attended Chelsea schools until moving to Grass Lake, where she graduated in 1977. She is employed at the Walker Manufacturing Co., Grass Lake. Her husband, a graduate of Western High school, is employed at Commercial Honeing in Jackson.

The newlyweds are making their home at Vandercook Lake.

Michelle Sarbach on Marymount College Volleyball Team

Michelle Sarbach, daughter of Mr. and Mrs. Douglas L. Sarbach, 3050 McKinley Rd., was a member of the volleyball team during the 1979 season at Marymount College of Virginia in Arlington.

Sarbach is currently a candidate for an associate of arts degree in business administration at the college.

A woman's college located near Washington, D.C., Marymount offers master's, bachelor's and associate degrees in more than 50 career-oriented programs.

Senior Citizen Nutrition Program MENU and ACTIVITIES

Week of Feb. 8-14
 Friday—Lasagne, hot buttered spinach, molded pineapple-carrot salad, cornbread and margarine, cinnamon applesauce, beverage. Recorder, 10 a.m.; Bible, 11 a.m.
 Monday—Ministrone soup, chilled pineapple juice, cottage cheese and apricot salad, apple-cinnamon muffins and margarine, butterscotch squares, beverage. Arts and crafts, 10:30 a.m.; exercise, 11:15 a.m.
 Tuesday—Closed.
 Wednesday—Fricassee of chicken, broccoli with lemon, red plum salad, wheat bread and butter, orange-banana Jell-O, beverage. Games, 10 a.m.

Thursday—Valentines Day. Lovers meatloaf, baked potato, carrot slaw, dinner rolls and butter, valentine cookie with ice cream, beverage. Planning session, 10:30 a.m.; square dance, 11:15 a.m.

MORE FIRES IN WINTER

The winter months are the worst for fire losses, according to the Insurance Information Institute. Although other factors are involved, this is mainly the result of heating hazards.

Telephone your club news to 475-1371

FFA Will Host District Contests

Monday, Feb. 11, the Chelsea FFA chapter will hold its monthly business meeting, beginning at 8 p.m. in the Ag room at the high school. On the agenda will be the land committee, banquet preparations, convention information and other topics.

The chapter has recently completed the last step in the process of carrying out their annual broiler project. Jiffy Market assisted members during the sale of the chickens.

This year, as in the past, the chapter will send two delegates and one alternate to the state convention, which runs from March 19 through 21. Attending as delegates will be Herb Pearson

and Bob Schleede, with Dave Heydlauff the alternate. Thursday, Feb. 7 the local chapter will host the District Leadership Contests for this district, which includes chapters from Dexter, Jackson Parkside, Manchester, Milan, Saline and Springport.

Contests will begin at 4 p.m. in the high school cafeteria. Chelsea will have members entered in public speaking, greenhand public speaking, demonstration, job interview and parliamentary procedure contests.

Please Notify Us of Any Change in Address

Jiffy market

Big Enough To Serve You . . . Small Enough To Know You!

PHONE 475-1701

SALE PRICES GOOD FEB. 7-10, 1980

TOP VALUE FOODS - GUARANTEED SATISFACTION - COURTEOUS SERVICE

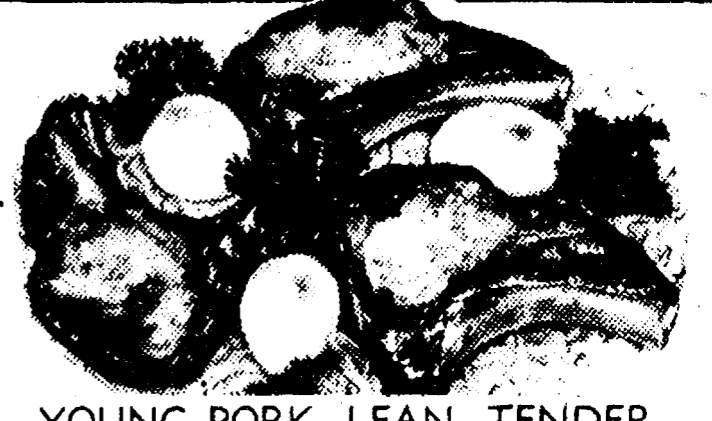
COMPLETE FRESH MEAT DEPT. - USDA CHOICE BEEF - THE FINEST OF FRESH PORK

FRESH GROUND
ALL-BEEF HAMBURGER

\$1.59 lb.

Hamburger you will enjoy!

JIFFY MARKET TASTIEST TENDEREST CHOICE MEATS



YOUNG PORK, LEAN - TENDER

QUARTER PORK LOINS

\$1.39 lb.

1/4 Pork Loin Sliced into 9 to 11 chops

WILSON'S BULK

SLICED BACON . . lb. 89¢

YOUNG-LEAN-TENDER

PORK STEAK

\$1.19 lb.

SALAY'S

Old-Fashion FRANKS

\$1.79 lb.

WILSON'S

HAM SLICES

\$1.89 lb.

MICHIGAN GRADE A

CHUNK BOLOGNA

\$1.29 lb.

FRESH GRADE A

MEDIUM EGGS . . doz. 59¢

CAIN'S

POTATO CHIPS

1-Lb. Bag **\$1.29**

A.B.C.

CAT FOOD

Fish Flavor

15% Can **10¢**

MAMA'S

Assorted COOKIES

3 8-Oz. Pkgs. **\$1.49**

The Uncola

7-UP, DIET 7-UP ORANGE CRUSH GRAPE CRUSH OR ROOT BEER (6-pack cans)

\$1.49 Plus Deposit

FARM MAID HOMOGENIZED

MILK gal. \$1.79

FARM MAID SPECIALS

LOW-FAT MILK

\$1.59 gal.

ORANGE JUICE

1/2 gal. **99¢**

HALF & HALF

pt. **69¢**

SOUR CREAM

69¢ pt.

12-OZ. CANS

PEPSI-COLA . . 8 pac \$1.98

(plus deposit)

JIFFY MEAT SERVICE
 CUSTOM CUTTING, WRAPPING, FREEZING.
 QUICK SERVICE ON BUTCHERING — YOUR BEEF OR OURS.

- ★ U.S.D.A. CHOICE SIDES OF BEEF
- ★ FRONTS - HINDS - WHOLE RIB - WHOLE LOINS
- ★ LOCAL FARM CORN-FED BEEF AVAILABLE

Open With Complete Service, 7 Days A Week

TOP VALUE FOODS **7 a.m. MORNING to 10 p.m. NIGHTS**

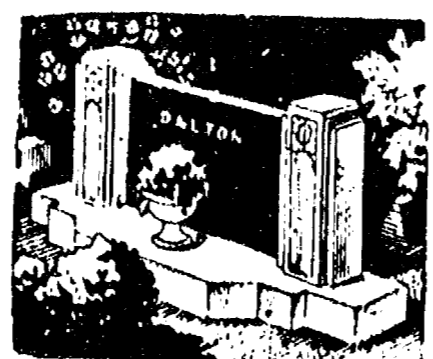
Sale Prices Feb. 7 Thru Feb. 10

FARAH

Beyond Comfort Fara-Flex Stretch Waistband Farah features the new comfortable Fara-Flex stretch waistband with fashionable styling and belt loops for a look of unmistakable comfort and fashion — at an unbelievable price.

\$18 Suggested Retail

FOSTER'S MEN'S WEAR



MAUSOLEUMS ★ MONUMENTS BRONZE TABLETS ★ MARKERS

BECKER MEMORIALS
 6033 Jackson Road
 ANN ARBOR, MICHIGAN

+ Services in Our Churches +

FAITH EVANGELICAL LUTHERAN CHURCH
9575 North Territorial Rd.
The Rev. Mark Porinsky, Pastor
Thursday, Feb. 7—
7:00 p.m.—Sunday school teachers.
8:00 p.m.—Choir.
Sunday, Feb. 10—
8:45 a.m.—Sunday school; Adult Bible class.
10:00 a.m.—Worship service. Sermon on Isaiah 55:8-11. K through 3 Sing.
11:00 a.m.—Coffee hour.
1:30 a.m.—Youth at Belmar Lanes.
Monday, Feb. 11—
7:30 p.m.—PTO.
Tuesday, Feb. 12—
6:30 p.m.—Confirmation II.
Wednesday, Feb. 13—
9:45 a.m.—Bible brunch at Maybees.
4:45 p.m.—Confirmation I.
8:00 p.m.—Council.

OUR SAVIOR LUTHERAN CHURCH
1515 S. Main, Chelsea
The Rev. Franklin H. Giebel, Pastor
Broadcast Sundays—
"The Church of the Lutheran Hour."
8:35 a.m.—WIBM, 1450 AM, Jackson.
12:30 p.m.—WYFC, 1520 AM, Ypsilanti.
Every Sunday—
9:00 a.m.—Sunday school, Youth and Adult Bible class.
10:30 a.m.—Morning Worship.
Every Wednesday—
7:30 p.m.—Adult Bible Study and prayer.

WATERLOO VILLAGE UNITED METHODIST CHURCH
8118 Washington St.
The Rev. Larry Nichols and The Rev. David Goldsmith, Pastors
Every Sunday—
10:00 a.m.—Sunday school.
11:15 a.m.—Worship service.

IMMANUEL BIBLE CHURCH
145 E. Summit St.
The Rev. Ron Little, Pastor
Every Sunday—
9:45 a.m.—Sunday school, nursery provided.
11:00 a.m.—Morning worship, nursery provided.
6:00 p.m.—Evening worship.
Every Wednesday—
7:00 p.m.—Family hour, prayer meeting and Bible study.

BETHEL EVANGELICAL AND REFORMED CHURCH
(United Church of Christ)
Freedom Township
The Rev. Roman A. Reineck, Pastor
Every Sunday—
10:00 a.m.—Worship service.

ST. BARNABAS EPISCOPAL CHURCH
The Rev. Fr. Jerrold F. Beaumont, B.S.P.
10:00 a.m.—Holy Communion first, third and fifth Sundays and 7:30 p.m. every Wednesday.
10:00 a.m.—Morning prayer, second and fourth Sundays. Church school and nursery every Sunday.
Every Wednesday—
8:15 p.m.—Bible study and discussion groups.
First Wednesday of every month—
Bishop's Committee.
Third Thursday of every month—
Episcopal church women.

ST. JACOB EVANGELICAL LUTHERAN CHURCH
The Rev. Andrew Bloom, Pastor
12501 Riethmiller Rd., Grass Lake
Every Sunday—
9:00 a.m.—Sunday school.
10:15 a.m.—Divine services.

ST. JOHN'S EVANGELICAL AND REFORMED CHURCH
(United Church of Christ)
Francisco
The Rev. Ben Mahrle, Pastor
Every Sunday—
10:30 a.m.—Sunday school and worship service.

ST. MARY CATHOLIC CHURCH
The Rev. Fr. David Philip Dupuis, Pastor
Mass Schedule:
Every Saturday—
5:00 p.m.—Mass.
Confessions immediately following Mass on Saturday.
Every Sunday—
8:00 a.m., 10:00 a.m., 12:00 noon—Mass.

ST. THOMAS EVANGELICAL LUTHERAN
Ellsworth and Haab Rds.
The Rev. Paul Puffe, Pastor
Every Sunday—
9:30 a.m.—Sunday school.
10:45 a.m.—Worship service.

CHELSEA CHURCH OF THE UNCOMPROMISING WORD
11452 Jackson Rd.
The Rev. Chuck Clemons, Pastor
Every Sunday—
10:00 a.m.—Sunday school.
11:00 a.m.—Morning worship.
6:30 p.m.—Evening worship.
Every Wednesday—
7:00 p.m.—Midweek prayer and Bible study.

SALEM GROVE UNITED METHODIST CHURCH
3320 Notten Rd.
The Rev. Ronald Brunger, Pastor
Sunday, Feb. 10—
9:30 a.m.—Sunday school.
10:30 a.m.—Worship service.
12 noon—Monthly pot-luck.
1:00—Clinton Barbershop Quartet, "Four Words of Harmony," concert.

FIRST UNITED PRESBYTERIAN CHURCH
Unadilla
Ms. Peggy Hall, Lay-Preacher
Every Sunday—
9:45 a.m.—Sunday school.
11:00 a.m.—Worship service.

CHURCH OF JESUS CHRIST OF LATTER-DAY SAINTS
(Mormon)
Chelsea Branch
Rebekah Hall
Every Sunday—
8:00 a.m.—Priesthood meeting.
9:00 a.m.—Sunday school.
11:00 a.m.—Sacrament Service.

CHELSEA BAPTIST CHURCH
337 Wilkinson St.
The Rev. Thode B. Thodeson, Pastor
Every Sunday—
10:30 a.m.—Morning worship.
11:00 a.m.—Junior church school.
6:00 p.m.—Evening fellowship.
Every Wednesday—
7:00 p.m.—Midweek Bible study and prayer.

FIRST UNITED METHODIST Parks and Territorial Rds.
The Rev. Larry Nicols and the Rev. David Goldsmith, Pastors
Every Sunday—
9:15 a.m.—Morning worship.
10:00 a.m.—Sunday school.

FIRST UNITED METHODIST CHURCH
The Rev. Marvin H. McCallum, Pastor
Saturday, Feb. 9—
10:30 a.m.—Carol Choir meets in the Social Center.
Sunday, Feb. 10—
9:00 a.m.—Worship service. Crib nursery provided.
10:00 a.m.—Worship service. Communion Sunday. Crib nursery provided for children up to the age of two. Church school for children ages two through five.
10:20 a.m.—Church school for kindergartners through sixth graders.
10:50 a.m.—Coffee hour in the narthex.
11:00 a.m.—Church school for junior-senior high.
11:00 a.m.—Adult discussion group will meet in the Social Center.
11:50 a.m.—All church school classes are dismissed.
2:15 p.m.—Children's Division Valentine Party at United Methodist Retirement Home.
6:00 p.m.—Confirmation-UMYF will meet.
Monday, Feb. 11—
7:00 p.m.—Fifth Grade Bell Choir.
7:30 p.m.—Council on Ministries.
Tuesday, Feb. 12—
9:15 a.m.—United Methodist Women Executive Committee will meet in Litteral Room.
7:00 p.m.—Youth Bell Choir.
Wednesday, Feb. 13—
3:30 p.m.—Praise Choir.
7:00 p.m.—Adult Bell Choir.
7:00 p.m.—Youth Division Workers' meeting.
8:00 p.m.—Chancel Choir.

ZION LUTHERAN CHURCH
Corner of Fletcher and Waters Rds.
The Rev. John R. Morris, Pastor
Thursday, Feb. 7—
7:30 p.m.—Senior Choir.
Saturday, Feb. 9—
9:00 and 10:30 a.m.—Youth Instruction Classes.
1:30 p.m.—Senior Citizens.
Sunday, Feb. 10—
9:00 a.m.—Sunday school.
10:15 a.m.—Worship service. Special congregation meeting after church.
7:30 p.m.—EMV-Training Event III.
Tuesday, Feb. 12—
4:00 p.m.—Joymakers.
7:30 p.m.—Rural study, fellowship.
Wednesday, Feb. 13—
7:30 p.m.—EMV-Training Event IV.

CONGREGATIONAL CHURCH
(United Church of Christ)
The Rev. Carl Schwarm, Pastor
Every Sunday—
10:30 a.m.—Worship and Sunday school. Nursery provided for pre-schoolers.

FIRST CHURCH OF CHRIST SCIENTIST
1883 Washtenaw Ave., Ann Arbor
Every Sunday—
10:30 a.m.—Sunday school, morning service.

FIRST ASSEMBLY OF GOD
The Rev. Richard Coury, Pastor
Every Sunday—
9:45 a.m.—Sunday school.
11:00 a.m.—Worship service.
6:00 p.m.—Evening worship.
Every Wednesday—
7:00 p.m.—Christ's Ambassadors. Missionettes. Bible Meditation and prayer.

CHURCH OF CHRIST
13661 Old US-12, East
Evangelist John M. Hamilton
Every Sunday—
7:30 a.m.—Radio program-WNRS in Saline.
8:30 a.m.—Radio program-WAAM in Ann Arbor.
9:30 a.m.—Bible study.
10:30 a.m.—Worship service. Nursery available.
6:00 p.m.—Sunday evening Bible study.
Every Tuesday—
7:00 p.m.—Women's Bible study class.
Every Wednesday—
7:30 p.m.—Bible study classes for all ages.

METHODIST HOME CHAPEL
Chaplain Ira Wood
Every Sunday—
8:45 a.m.—Worship service.

ST. PAUL UNITED CHURCH OF CHRIST
Dr. William C. Donald, Interim Pastor
Sunday, Feb. 10—
9:00 a.m.—Confirmation.
9:00 a.m. and 10:30 a.m.—Church school.
10:30 a.m.—Worship service.
Wednesday, Feb. 13—
1:30 p.m.—World Wide.

NORTH LAKE UNITED METHODIST CHURCH
The Rev. John Elliott, Pastor
Every Sunday—
10:00 a.m.—Worship service.
10:30 a.m.—Church school for children age three through high school.

NORTH SHARON BIBLE CHURCH
Sylvan and Washburne Rds.
The Rev. Ronald C. Purkey, Pastor
Every Sunday—
10:00 a.m.—Sunday school. (Nursery available.) Junior church classes.
11:00 a.m.—Worship service.
6:00 p.m.—Senior High Youth meeting. Youth choir.
7:00 p.m.—Evening worship service. (Nursery available.) All services interpreted for the deaf.
Every Wednesday—
7:00 p.m.—Bible study and prayer meeting. (Nursery available.) Bus transportation available: 428-7222.

CHELSEA FREE METHODIST FELLOWSHIP
Meetings at St. Barnabas Episcopal Church
20500 Old US-12
Every Sunday—
3:45 p.m.—Sunday school for all ages.
5:00 p.m.—Worship service.
Every Thursday—
7:30 p.m.—Adult study, Children's CYC program, and youth meeting.

ST. JOHN'S UNITED CHURCH OF CHRIST
Rogers Corners
Every Sunday—
10:30 a.m.—Worship and Sunday school.

BAHA'I FIRESIDE
Every Thursday—
8:00 p.m.—At the home of Toby Peterson, 705 S. Main St. Anyone wishing to learn about the Baha'i faith is welcome.

GREGORY BAPTIST CHURCH
The Rev. David Brinkman, Pastor
Every Sunday—
9:45 a.m.—Sunday school.
11:00 a.m.—Morning worship.
6:00 p.m.—Young people.
7:00 p.m.—Evening worship.

CHELSEA CHRISTIAN MEN'S FELLOWSHIP PRAYER BREAKFAST
(Non-Denominational)
First Saturday Each Month—
8:00 a.m.—Breakfast.
8:30-10:00 a.m.—Program.
CHELSEA HOSPITAL MINISTRY
(Non-Denominational)
Every Sunday—
10:00 a.m.—Morning service, Chelsea Community Hospital Cafeteria.

February Is CPR Month in Washtenaw

Five officials from local government formally proclaimed February "CPR Month in Washtenaw County" in a recent ceremony at the St. Joseph Mercy Hospital Education Center. CPR, or Cardiopulmonary Resuscitation, is a life-saving emergency technique used to revive victims of drowning, heart attack, electric shock, smoke inhalation, and other fatal conditions. Participating in the ceremony were Ann Arbor Mayor Louis Belcher, Ypsilanti Mayor George Goodman, Milan Mayor Ron Weber, Saline Councilman Jerry Wright, and Richard Walterhouse, chairman of the Washtenaw County Board of Commissioners.

Free public CPR classes will also be held from 9 a.m. to 7 p.m., Friday, Feb. 15, at Washtenaw Community College, and Saturday, Feb. 16, at Pioneer High school, Ann Arbor. Pre-registration is required only for groups of 10 or more, and new classes will start every one-half hour. For registration and information, call the Red Cross at 971-5300. These "CPR Days" have the capacity to train more than 2,000 people.

Among the 200 certified volunteer instructors for the Feb. 15 and 16 CPR classes will be members of the University of Michigan Hospital, St. Joseph's, Chelsea Community Hospital, GM Hydramatic in Ypsilanti, the Ypsilanti Regional Psychiatric Hospital, Maxey Boys Training School, and the Ypsilanti Township Fire Department. In conjunction with the county-wide effort, Saline Community Hospital is also sponsoring free CPR classes Tuesdays and Thursdays during February at Saline High school. To register, call 429-5435. The Ervin Foundation is sponsoring the classes at St. Joseph's.

How can I cope with these changing times?

What is happening to America: The Home of the Brave and the Land of the Free?

You need some absolutes!

LARRY OPIE

with Mr. and Mrs. Phil Carter of Elgin, Illinois

have some answers:

1. Receiving God as MY God
2. Godliness — preparation for power
3. Power in weakness — Paul
4. Distributing the power
5. Maintaining the flow — Communion

Sunday thru Wednesday FEBRUARY 10-13

Sunday, 10:30 a.m. Sunday eve., 6 p.m. Monday, Tuesday, Wednesday, 7 p.m.

CHELSEA BAPTIST CHURCH

337 Wilkinson Street
475-1520 T. B. Thodeson, pastor

You Read It First in The Standard!

475-8680 115 PARK ST.
475-8689 CHELSEA, MICH.

MAYER AGENCY


(of Springer-Kleinschmidt Agency Inc.)

Your Local Independent Insurance Agency providing dependable protection and prompt claim payment through 10 of the nation's leading insurance companies.

HOME - AUTO - BUSINESS INSURANCE

Sheridan W. Springer Charles A. Kleinschmidt
Ruth DeVine Donald S. Peck Micky Quackenbush

Stop and think about it



DONALD A. COLE
Director

Would your family know what to do if they were suddenly faced with the need to make funeral arrangements? You can record your wishes with us in advance . . . thus assuring that they'll have a helpful guide to follow.

BURGHARDT-COLE CHELSEA FUNERAL CHAPEL
214 East Middle Street
Phone 475-1551

Member: The International Order Of The Golden Rule

The Bible-The Light from Heaven

Teaches the greatest need in the modern world is undenominational Christianity. The proper basis for undenominational Christianity is found in the New Testament, in the seven fundamental unities mentioned by Paul in his letter to the Ephesians. He reminds us that there is: ONE BODY or church: for the church and the body of Christ are identical. (Ephesians 1:22, 23; Colossians 1:18). One Spirit, which is the Holy Spirit. As a guide into all truth. (John 16:13). One Hope, or aspiration. The heavenly home is the goal toward which the members of the one body are, or should be moving. One Lord, the Christ. All authority both in heaven and on earth has been given to him. (Matthew 28:18). We are to listen to Jesus. (Matthew 17:4, 5; John 6:68; Hebrews 5:8, 9). One Faith, or creed. The creed is Christ and his teaching. The addition of man-made creeds causes division among the followers of Christ. The apostle Peter stated: "If any man speak, let him speak as the oracles of God." (1 Peter 4:11). One Baptism, in the name of the Father, and of the Son, and of the Holy Ghost. (Matthew 28:19). A burial is taught in the Bible. (Romans 6:4; Colossians 2:12). One God and Father of all. He is the grand Object of our worship and devotion. The golden chain of unity is composed of seven links. Jesus prayed that believers all be one. (John 17:20, 21).


CHELSEA CHURCH OF CHRIST

13661 Old US-12 Chelsea, Michigan

The Following Chelsea Financial Institutions Will Be Closed MONDAY, FEB. 11

In observance of Abraham Lincoln's birthday.

CHELSEA STATE BANK Member F.D.I.C.



GREAT LAKES FEDERAL SAVINGS
Offices in: Ann Arbor, Battle Creek, Albion, Bellevue, Brighton, Chelsea, Coldwater, Dexter, Hastings, Jackson, Manchester, Marshall, Okemos, Richland, Saline, Ypsilanti • Member FSLIC

CHELSEA BANKING OFFICE
ANN ARBOR TRUST COMPANY
1478 Chelsea-Manchester Road • Chelsea, Michigan 48118 • Phone 475-9154

LOTS OF BURGLARIES
 Noting that a burglary occurs every 46 seconds in the United States, the Insurance Information Institute says many of these could be avoided if homeowners would lock their windows and doors and take a few other simple precautions.

Volleyball
 Feb. 8—LincolnH
 Feb. 11—StockbridgeA
 Feb. 15—MilanA
 Feb. 18—ManchesterA
 Feb. 23—League MeetA
 Feb. 28—Gabriel RichardA
 Mar. 7—State DistrictA
 Home games begin at 4 or 7 p.m.

Thank You

On Feb. 10, 1980, I will be closing the Chelsea Restaurant. I would like to thank all my friends for their many years of patronage.

Watch for possible reopening around March 10 under new management.

CHELSEA RESTAURANT

Mrs. Ella McMillan



JV POWER: Six Chelsea junior varsity wrestlers placed in last week's league match with Milan. No team scores were recorded. Pictured are, rear from left, JV Coach Mike Young;

Mark Bulick, 4th, 98; Scott Dault, 2nd, 112; Tim Pennington, 3rd, 112; and front, Steve Snyder, 1st, 98 (pinned all opponents); Tom Headrick, 1st, 145; and Ray Williams, 1st, 155.

Jr. High Basketball
 Feb. 7—SalineA
 Feb. 12—DexterA
 Feb. 14—MilanH
 Feb. 16—Stockbridge Tourn.

Subscribe today to The Standard.

Pollards To Present Travel Film on Spain

Saturday evening, Feb. 9, Chelsea's Kiwanis Club will present its fourth program of the "Travel and Adventure Series" at 8 p.m. in the Chelsea High school auditorium.

Entitled "The People of Spain," the travelogue will be presented by Howard and Barbara Pollard, both of whom have backgrounds that are ideal for their adventurous life of travel filmmaking.

Howard, a native midwesterner, studied engineering and filmmaking at Lawrence Tech. After a stint in the Army as a cameraman, he went into his own business of producing television commercials and short subjects. He has won many awards for his film work.

Barbara has studied voice and drama at the Detroit Conservatory of Music and also at the well-known Interlochen National Music Camp. She also attended the University of Miami, majoring in radio and television acting and theatre. After graduation, her professional appearances in-



HOWARD, BARBARA POLLARD cluded the Detroit Civic Light Opera, the Normandy Players and summer stock.

With much insight, Howard and Barbara have turned their talents to the country of Spain. The Pollards are convinced that the best way to discover a country is through a knowledge of its people. This refreshing viewpoint gives audiences a deeper understanding of cultural differences and similarities.

While important Spanish points of interest will be visited, the audience will be viewing them through the eyes of the Spanish people themselves.

With Spaniards as guides, visit the cities of Madrid, Toledo, Segovia, Avila and El Pardo. See them for the first time through the eyes of their inhabitants. The Spanish are idealistic and generous people and the Pollards will show how these personality traits affect their lives and relationships with one another.

A sequence about the great Spanish author, Cervantes, will better explain Spanish idealism and the influence his classic novel, "Don Quixote," has had on the entire world.

Working from the belief that people are curious about people, Howard and Barbara Pollard have created a film of beauty, color, warmth and information.

Tickets may be purchased at the door Saturday evening. The travelogue will begin promptly at 8 p.m.

Please Notify Us of Any Change in Address

FREE GIFT

Ride and Drive a GMC Van & receive a FREE Gift

Make Your Best Deal and receive \$500 rebate from GMC on a 1979 Van.

'79 RALLY WAGON
 List \$10,007.80
 NOW \$7490.00
 S1K No 37

LEE GMC, INC.

1-94 at Airport Rd.
 Jackson 787-3200

Open Mon. & Wed. til 8 p.m.
 Sat. til 1 p.m.

Awarded Memorial Scholarship

Robert M. Wenk, son of Mr. and Mrs. Norman O. Wenk of Chelsea, has recently been named the recipient of the Arthur J. Packard Memorial Scholarship. The American Hotel Foundation sponsors this nation-wide competition, which allows only one student to be nominated from each hotel school around the country. The scholarship fund was established to commemorate an industry leader and past-president of the American Hotel Foundation.

Rob is in his senior year at Michigan State University and will graduate with a degree from the College of Business in hotel, restaurant and institutional management. He is currently employed on a part-time basis by the Detroit Plaza Hotel in Renaissance Center as their Lansing area sales representative.



ROBERT M. WENK

Wrestlers Win Over Lincoln, 45-19

Chelsea's varsity wrestlers took another victory last Thursday evening, defeating Lincoln, 45-19, to bring their season record to 4-7.

Winning for the Bulldogs were Jim Cobb, at 119, Craig Sturgeon at 132, Steve Grau at 138, John Preston at 145, Ray Williams at 155 and Rick Poljan at 185. Both Williams and Poljan won by pins.

Next contest for the grapplers will be tonight at Stockbridge, followed by the league match on Saturday.

Rummage Sale To Help Pay for Play Equipment

Kindergarten classes of Mrs. Michelson and Mrs. Halefa and their families are busily planning a rummage sale to raise funds for kindergarten equipment.

The sale will be held Saturday, Feb. 23, from 8 a.m. to 4 p.m. in Mrs. Halefa's room in North school. All sale items will be donated.

Pat Coelius and Karen Baize are co-chairpersons of the fundraiser, with each family taking on the responsibility for one job. In addition, children in the kindergarten classes are making posters to advertise the sale.

This is the second annual kindergarten rummage sale. Last year's sale and other events provided funds for a swing set, to be installed on the kindergarten playground this spring.

Telephone your club news to 475-1371

Letters to the Editor

Dear Editor:

Many times we forget to recognize the good within our own community. We read of problems and crime while many acts of kindness and giving go unnoticed. I would like to recognize a man in our community who has given his time to special kids.

Dr. Jerry Waldyke has donated his time to give physical exams to all of Chelsea's Special Olympians for a good many years. He has made it all possible for them to meet the requirements of competition. We have invaded his office in groups of 30 or more and he has patiently taken time with each child. We thank him very much for the help he has given us and for the many other contributions he has made to the school and the community. His kindness won't be forgotten.

Chelsea's Special Olympians, Nancy Cooper, and Judy Bottom Chelsea High School.

Senior Citizens Plan Valentine Cookie Sale

Chelsea's Senior Citizens Center will be sponsoring a Valentine Cookie Sale next Thursday, Feb. 14, all proceeds to go toward the daily operation of the center, located at 134 W. Middle St.

Cookies may be purchased from 1 to 4 p.m. at the center on that day and all are welcome to buy.

Real Estate

By PAUL FRISINGER

RESIDENTIAL HOME AS INVESTMENT

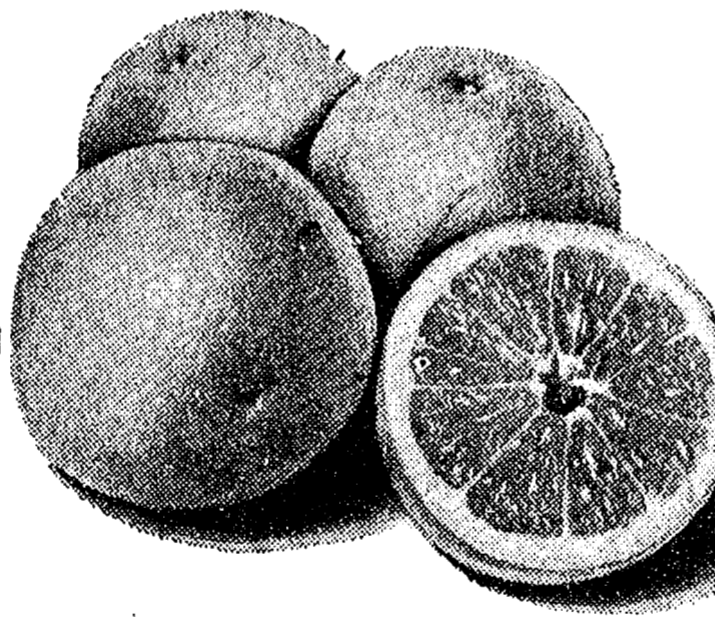
In the past, any real estate investor who eyed the purchase of income-producing property would forsake the single-family home and aim for the apartment house. The reason being that the cash flow is always larger with multi-family dwellings in relation to the amount of dollars invested.

But this view is changing today and the single-family home is growing more and more popular as an investment property, especially for the beginning investor. For one thing, there are a lot more of them on the market than apartment houses. They are easier to get into and out of so the investment money is somewhat more liquid.

In some ways, it can be compared with the investment of raw land in that the main profit is made when the property is sold. If the residential homes are selected carefully in a steady growth area, the appreciation can be very lucrative. Holding costs can be covered by rental income. Also there is an excellent tax shelter offered by deducting depreciation from your income which can allow you to reduce the taxes on other income.

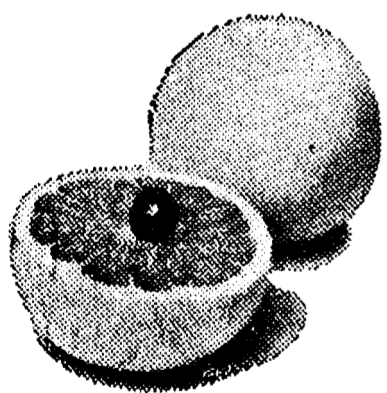
If there is anything we can do to help you in the field of real estate, please phone or drop in at FRISINGER REALTY CO., 935 S. Main St., Chelsea. Phone: 475-8681; evenings 475-2621. We're here to help!

5th ANNUAL KIWANIS CITRUS FRUIT SALE!



Direct from the Groves in Sunny Florida

Tree-Ripened Florida Citrus Fruit



- ★ Tangerines . . . \$12.00
- PINK
- ★ Grapefruit . . . \$ 9.75
- TEMPLE OR VALENCIA
- ★ Oranges . . . \$ 9.75

(A Box is 4/5 bushel)

You may order all oranges - all grapefruit, or mixed, half and half.

Five days before the citrus fruit is on your table it was hanging on a tree in sunny Florida. Truly fresh Florida citrus fruit.

YOU CANNOT BUY THIS IN ANY STORE!

ORDER NOW! Receive the finest CITRUS FRUIT you have ever eaten . . . and help Kiwanis carry out their many community service projects.

Place Orders With Any of the Following:

CHELSEA PRO HARDWARE
 HEYDLAUFF'S
 PALMER FORD
 STATE FARM INSURANCE
 FRISINGER REALTY

KUSTERER'S FOOD MARKET
 CHELSEA STATE BANK
 GROVE 5c to \$1 STORE
 THE CHELSEA STANDARD
 OR ANY CHELSEA KIWANIAN

ORDER NOW — DELIVERY APPROX. MARCH 5



Farmers' Supply Co.
 Phone 475-5511

BEST WAY CARPET CLEANING
 features our
**TRUCK MOUNTED
 STEAM CLEANING PLANT**
We get your carpets cleaner!
 TRAINED, UNIFORMED TECHNICIANS
 Also: Upholstery Cleaning our specialty.
 Drapes, Walls, Exteriors Cleaned, too.
 SATISFACTION GUARANTEED.

BONDED INSURED **663-2733** FREE ESTIMATES

KITCHEN REMODELING
 ★ We of Dutch Country are kitchen remodeling specialists.
 ★ Export installation available.
 ★ Free design layout service.
 ★ Featuring: HAND CRAFTED AMISH CABINETS.
 ★ Distinctive "GOLDEN OAK CABINETS" By Continental.
 ★ Jenn-Air Appliances ★ Delta Faucets ★ Elkay & Kohler Sinks.
 VISIT OUR SHOWROOM
DUTCH COUNTRY KITCHENS
 146 E. Main 428-7292 Manchester

OPEN SUNDAYS
 10 a.m. to 2 p.m.
 MAIN STORE ONLY
 1414 S. MAIN ST., CHELSEA
 Phone 475-9106
The PARTS PEDDLER
 AUTO SUPPLY STORES
 Tell Them You Read It in The Standard!

SEC ROUNDUP:

Chelsea Still Leads League With Big Win Over Milan

Chelsea stayed on top of the pack in the SEC this week, defeating Milan and eliminating the Big Reds from a shot at the league title.

The night before that contest, Milan handled Lincoln easily at home, 80-58.

Saline continued to win as they move forward to the league-deciding battle Feb. 15 at Chelsea. Dexter was no match for the Hornets as they romped, 72-55.

Chelsea and Dexter prepare to face off Friday evening on the Dreadnaughts' home floor in a second meeting this year of the traditional neighborhood rivalry.

Saline 72, Dexter 55—
 John Kendzicky, Saline's big man, scored 18 points and grabbed 13 rebounds to lead the Hornets to their 72-55 win over Dexter last Friday night.

The Dreadnaughts were plagued in the second and fourth quarters by shots that refused to drop in, going 5 for 31 in outside shooting in those periods.

Only Rob Ianni managed to score in double figures for the Dreadnaughts, as he came up with 17. Usual high scorers Jeff Leighton and Jim Vaughan were stopped cold, scoring only 30 points together with Ianni.

Dexter is now 5-8 over-all, with Saline at 9-1.

Milan 80, Lincoln 58—
 Milan steamrolled over Lincoln Friday night, 80-58, looking ahead to their Saturday SEC showdown with Chelsea.

The Big Reds held a 41-21 lead at the half, led by Gary Chatell who scored 17 of his 21 points in the first half.

A fine performance by Lincoln's Jim Czinski, featuring 17 points and 12 rebounds, couldn't save the game for the Railsplitters, who dropped to a 2-5 record in the SEC.

SEC STANDINGS

	SEC		Overall	
	W	L	W	L
Chelsea	7	0	12	1
Saline	6	1	11	1
Milan	3	3	8	4
Dexter	2	5	4	8
Lincoln	2	5	3	9
JC West	1	6	3	9

JV Cagers Down Pinckney, Milan

A season-long malaise was broken with a vengeance by Chelsea junior varsity roundballers last week, as they captured consecutive contests from Milan and Pinckney.

The JV took a big lead into the final quarter of their contest with Pinckney last week and never let go, finally winning, 53-41.

Chelsea controlled the boards on Pinckney quite well, said coach John Schaffner, outrebounding the opposition, 34-26.

John Welton scored 11 points in the effort, followed by Darrow Keezer and Toby Boyd with 8 each, Daren Pierson with 7, Bob Trevino with 6, Jeff Shaw with 4 and Mike Bareis with 3. Jeff Rowe, Todd Sprague and Dave Stevens each had two points.

The Milan contest was considerably closer, as the Bulldogs managed to pull it out in the final

five seconds and win by one, 38-37.

The Big Reds were up by one point when, with five seconds to go, Mike Bareis hit an eight footer to pull ahead. Milan got the ball back, but Shaw intercepted an inbound pass to end the drive. He committed a foul in the act, but Milan missed both free throws after the buzzer to hand the Bulldogs the victory.

Keezer led in the contest with 12 points. Bareis had 8, Welton 7, Sprague 5 and Pierson 4. Rebounding was led by Keezer with 8, and Welton and Sprague with four each.

Next contest for the JV is Friday night against a tough Dexter squad.

Score by quarters—Pinckney
 Chelsea 12 13 16 12—53
 Pinckney 5 12 8 16—41

Score by quarters—Milan
 Chelsea 7 11 10 10—38
 Milan 7 11 6 13—37

Residential - Commercial
REMODELING
 FREE ESTIMATES
Ib. V. JENSEN and SON
 LICENSED BUILDER
 378 Spring Lake Drive
 Chelsea, Mich.
 PHONE 475-1820

Pinckney Cagers Down Hartland

Pirate cagers sprang back from a 16-10 trailing first quarter to win over Hartland Friday night, Feb. 1, 69-51.

Pirates rallied in the second period to hand their opponents a 25-20 drubbing, and consistently outscored them throughout the second half, 16-10 and 18-15.

Janowski shouldered much of the Pinckney attack with 20 points, followed by Haak with 16 and Evans with 12. Pinckney absorbed 23 fouls to Hartland's 20.

The victory placed Pinckney second in the Kensington Valley Conference.

HEATING UNIT FIRES

One out of every 10 fires in the United States begins in some kind of heating unit, according to the Insurance Information Institute.

Freshman Cagers Win Over Lincoln

Frosh cagers upped their season record to 5-3 last Thursday night as they scored 23 points

in the final period to engineer a come-from-behind victory over Ypsilanti Lincoln, 55-46.

"After fading in the fourth quarter in several of our previous games, we were determined not to let that happen Thursday," said Coach Jim Tallman. "As a result we put even greater offensive pressure on and pulled away from Lincoln, who had led the entire game up to that point."

Leading scorer for the Bulldogs was Dave Wojcicki with 15, followed by Frank Waller with 13, and Randy Krichbaum also in double figures with 11. Rod Robeson scored six for the victors.

In rebounding, the squad was led by Dave Mann who hauled down 11. Krichbaum had nine and Matt McCallum grabbed five.

Coach Tallman cited the play of Mann and Krichbaum, who pulled down 20 rebounds between them, and Robeson on defense.

Next contest for the frosh is this Thursday evening, Feb. 7 at home against Jackson County Western.

Score by quarters
 Chelsea 9 11 12 23—55
 Lincoln 12 10 14 10—46

CARELESSNESS CAUSES FIRES

The Insurance Information Institute reports that three-fourths of the fires which occur in American homes are the result of carelessness.

Please Notify Us of Any Change in Address

We build special storage buildings.

Cuekier pre-engineered, all steel buildings for storage on the farm, business and industry. Wide variety of types and sizes. Let us help you plan and build for your present and future needs.

Cuekier
 AUTHORIZED BUILDER
DICK POLJAN
 13875 McKinley
 CHELSEA, MICH.
 Ph. 475-2921

Boating Classes Start Feb. 14

United States Coast Guard Auxiliary Flotilla 12-19 will offer both a "Boating Skills and Seamanship" course for power boaters and a "Sailing and Seamanship" course for sailors, beginning Thursday, Feb. 14, at

Dexter High school. Both classes will meet from 7 to 9 p.m. and will run for 10 weeks. Advance registration will be required for either course. Call 428-2902 for more information and for registration.

Carl's Cleaning Service
 409 W. Middle St. Chelsea, Mich.
Professional Carpet & Upholstery Cleaning
 BUSINESS - RESIDENTIAL
 FREE ESTIMATES Phone 475-8007

Hoffman Tire & Service
 7 miles west of Chelsea
 13660 E. Michigan
 Grass Lake 522-8542
THE SIGN OF QUALITY TIRES
CERTIFIED IN TUNE UPS & ENGINE REPAIR

CALL OR STOP IN
CHELSEA GLASS, INC.
 WORKMANSHIP AND MATERIALS FULLY GUARANTEED
 Open Daily 8 a.m. to 5 p.m.; Sat., 8 a.m. to 1 p.m.
 140 W. Middle, Chelsea Phone (313) 475-8667
WE REPAIR AND REPLACE:
 ★ STORE FRONTS ★ MIRRORS
 ★ FURNITURE TOPS ★ PATIO DOORS
 ★ SHOWER DOORS ★ TUB ENCLOSURES
 ★ THERMOPANES ★
 ★ AUTO GLASS - Including Windshields
 Free Pick-up and delivery on auto work.
Storm Door & Window Reglazing & Screens
 COMMERCIAL BUILDINGS OR RESIDENTIAL
PROMPT SERVICE REASONABLE PRICES

Get Out of That Rut . . .
DON'T BE A "STUCK IN THE MUD"
 Call **M & M GRAVEL CO.**
 Repair Your Old Driveway Or Build A New One!
WE CAN DO THE JOB . . . WE HAVE WHAT IT TAKES!
 ★ ROAD STONE **PHONE 475-1941**
 ★ BASE STONE
 ★ DRAINFIELD STONE
 ★ WASHED SAND
 ★ PEA STONE Or after 4 p.m. (313) 498-2866
 ★ FILL DIRT
Located 4 Miles North of Chelsea M-52 and ROE ROAD
PIT HOURS: 8 to 5 Mon. thru Fri., 8 to 12 Sat.

TIDY CAR
 World's Leading Auto Appearance Specialists
A TOTAL FINISH CONCEPT
PRESERV-A-SHINE
 NEVER WAX YOUR CAR AGAIN. How would you like to have a car that stayed shiny and repelled dirt.
 A car that looked like it just sailed out of the showroom, month after month.
 A car that required no work from you, other than the occasional wash.
 Sound Good — Call Tidy Car.
 Tidy Car's Preserv-A-Shine can do just that - give your car a showroom shine and preserve it for the life of the car.
 Preserv-A-Shine is not a wax. It's an exclusive formula that's actually buffed into the surface of the car to give a protective glass-like shine that seals out the harmful effects of oxidation, salt, snow and sun.
 The Preserv-A-Shine process includes initial treatment and an annual cleaning and re-sealant job. And it means you'll never have to wax your car again. Guaranteed in writing.
UPHOLSTERY-GARD 2
 Protects new interior fabrics from common spills and stains. It's like an invisible seat cover, and doesn't change the texture or the feel of the fabric. Guaranteed in writing for as long as you own your car.
Vinyl Roof Revitalization-Protection
 Your vinyl roof will look like new for months and months with a vinyl roof treatment that helps repel dirt, grime, and pollution. Protects vinyl and leather interiors, too.
 We'll be glad to give you a free demonstration and answer any questions you may have.
"Your Car Is A Reflection of You"
TIDY CAR, INC.
 ASSOCIATE DEALER
TOMPKINS ELEGANT AUTOS
 3663 SOUTH M-52 2 MILES SOUTH OF I-94
Phone 475-2952

GRAND OPENING
 OF OUR
NEW DINING ROOM
LITTLE ROOSTER
RESTAURANT & LOUNGE
 Ready To Open
TUESDAY, FEB. 12
LIVE ENTERTAINMENT and DANCING
Friday and Saturday Evenings After 9
LITTLE ROOSTER
 11485 NORTH TERRITORIAL RD.



BOWLING NEWS



Leisure Time Bowling League

Standings as of Jan. 31

W	L
Lucky Strikers	48 36
Misfits	47 37
Rockettes	47 37
Mamas & Grandmas	47 37
The Late Ones	45 38 1/2
Rebs	45 39
Split Ends	43 41
Lady Bugs	39 44 1/2
Sweetrollers	39 45
Handicaps	38 45 1/2
Shud-O-Bens	30 54

500 series and over: P. Whitesall, 510.
400 series and over: D. Ringe, 414; S. Williams, 431; J. Westphal, 409; P. McVittie, 463; S. Kulenkamp, 475; S. Friday, 462; G. Wheaton, 448; S. Heim, 423; C. Root, 419; T. Reilly, 401; B. Kies, 417; G. Feldman, 419; P. Williams, 480; L. Daddona, 417; H. Dittman, 400; M. Herrin, 406; R. Forner, 410; E. Heller, 443; D. Clark, 469; J. Manley, 430; C. Hofman, 456.

Games 140 and over: D. Ringe, 172; S. Williams, 147, 158; J. Westphal, 147; P. McVittie, 176, 149; P. Whitesall, 198, 178; S. Kulenkamp, 152, 188; D. Thompson, 141; S. Friday, 162, 141, 159; G. Wheaton, 187, 164; S. Heim, 168; H. Ringe, 144; L. Sapsford, 144; C. Root, 140, 147; T. Reilly, 156; B. Kies, 146, 152; G. Feldman, 144, 141; P. Williams, 187, 157; S. Bauer, 151; L. Daddona, 151, 151; M. Herrin, 169; R. Forner, 142, 152; E. Heller, 147, 156, 140; B. Robinson, 140; M. Hanna, 142; D. Clark, 164, 153, 152; W. Picklesimer, 140; M. Gannon, 140; J. Manley, 148, 150; C. Hoffman, 168, 181; S. Mead, 144.

Chelsea Suburban League

Standings as of Jan. 30

W	L
Awards & Specialties	97 5
Chelsea Assoc. Builders	95 59
D. D. DeBurring	84 70
Dancer's	82 72
State Farm	81 72 1/2
Ricardo's	81 73
Log Cabin	77 77
Chelsea Lanes	71 83
Chelsea Pharmacy	66 88
Frisinger Realty	65 88 1/2
Dana PTO Gals	65 89
Chelsea State Bank	59 95

155 games and over: M. Ashmore, 193; E. Yocum, 169; A. Hocking, 162; F. Cole, 191, 177, 160; C. Stoffer, 177, 157, 156; D. Hawley, 175; P. Harook, 197; S. Bowen, 167; P. Schaff, 164; S. Hafner, 195; N. Prater, 171, 166; J. Schulze, 159; L. Beeman, 209; D. Vargo, 156; P. Elliott, 174; P. Devulder, 156; M. Fahrner, 182, 160; S. Ratzlaff, 177, 161, 158; D. Bucholz, 206; K. Tobin, 176, 166; B. Augustine, 166; J. Buku, 215; D. Thompson, 205; S. Nicola, 176, 164; D. DeLaTorre, 173, 164; E. Figg, 163; M. Usher, 156; R. McGibney, 162; M. Stoffer, 183; S. Graber, 155; M. Bollinger, 157, 155.
465 series and over: F. Cole, 528; C. Stoffer, 490; P. Harook, 481; S. Hafner, 489; N. Prater, 475; M. Fahrner, 495; S. Ratzlaff, 496; D. Bucholz, 493; K. Tobin, 473; J. Buku, 472; S. Nicola, 485; D. DeLaTorre, 481.

Chelsea Women's Bowling Club

Standings as of Jan. 30

W	L
Jiffy Mixers	56 28
Chelsea Milling	52 32
Parish Cleaners	50 34
The Big X	47 36 1/2
Norris Electric	46 38
Wolverine Bar	44 40
Palmer's Leasing	43 41
Knights of Columbus	42 41 1/2
Countryside Builders	41 43
Heller Electric	40 44
Truman Machine	38 45 1/2
Laura's Beauty Shop	36 48
Alley Cats	35 49
Bailey's Girls	35 49
IPSCO	34 50
Klink's Excav.	28 55 1/2

Team high game: Countryside Builders, 810.
Team high series: Countryside Builders, 2,331.
Individual high game: K. Powers, 192.
Individual high series: J. Johnston, 519.

Games over 150: M. Poynter, 172, 163; D. Alexander, 180; C. Klink, 159, 165, 151; N. Smith, 161, 148; J. Modrzewski, 171, 180; R. Hummel, 175, 156; A. Eisele, 161; P. Wurster, 163; C. Wade, 178; B. Poertner, 191; C. Bradbury, 183, 187; M. Kruse, 152; S. Girard, 174, 156; M. McGuire, 162; S. Ritz, 179, 160; M. Kozminski, 158; J. Pagliarini, 159, 152; M. Wright, 177, 173; B. Houle, 179; H. Fox, 169; M. Privatte, 164; J. Andariese, 188, 164; P. Fitzsimmons, 176, 157; J. Hafner, 163, 161; J. Johnston, 152, 189, 178; J. Alber, 178; J. Collins, 153, 150, 153; D. Alber, 175, 181; L. Schanz, 171; K. Powers, 164, 192; P. Klave, 151; J. Gregory, 153; S. Bailey, 153, 171.

Super Six League

Standings as of Jan. 30

W	L
Riibits	98 63
Wonder Women	88 73
Leftovers	81 80
Screwballs	73 88
G & L's	72 89
Lucky Strikes	71 90

Games of 140 and over: J. Engel, 141, 143; L. Clark, 169, 154, 151; T. Whitley, 152, 154; D. Clark, 180, 144, 165; L. White, 164, 148; S. Steele, 150, 145; A. White, 147; K. Greenleaf, 197, 162; L. Lukasiak, 207; L. Westcott, 170; C. Reynolds, 142; K. Buss, 143, 150; C. Collins, 165, 159; J. Lonskey, 150, 163; K. Clark, 144, 171, 151; J. Sweet, 158; D. Taylor, 145, 176; L. Buscek, 140.
Series of 425 and over: L. Clark, 474; T. Whitley, 426; D. Clark, 489; K. Greenleaf, 493; L. Lukasiak, 451; C. Collins, 437; J. Lonskey, 447; K. Clark, 466; D. Taylor.

Subscribe today to The Standard.

Rolling Pin League

Standings as of Feb. 5

W	L
Troopers	57 27
Kitchen Kapers	54 29 1/2
Pots	52 32
Mixers	51 33 1/2
Sugarbolls	48 36
Grinders	47 37
Beaters	45 38 1/2
Jolly Mops	44 40
Jelly Rollers	43 40 1/2
Silverware	43 40 1/2
Coffee Cups	42 41
Brooms	38 45 1/2
Kookie Cutters	36 48
Dishwashers	34 50
Sweet Rolls	33 50 1/2
Spooners	30 54
Poachers	30 54
Blenders	21 62 1/2

500 series and over: P. Harook, 526; L. Stuewe, 600.
400 series and over: C. Williams, 416; E. Heller, 428; G. Clark, 490; E. Whitaker, 403; J. Cronkhite, 430; N. Hill, 410; G. Shank, 415; M. Erskine, 420; C. Ramsey, 421; B. Halst, 414; B. Wolfgang, 411; M. Wojcichi, 402; R. Musbach, 420; P. Wurster, 481; M. Moore, 403; J. Smith, 400; J. Edick, 431; O. Williams, 435; E. Williams, 416; M. Kozminski, 416; N. Hahn, 400; B. Roberts, 465.

140 games and over: C. Williams, 156; H. Ringe, 150; G. Feldman, 154; E. Heller, 151, 141; G. Clark, 147, 190, 153; G. Klink, 148; J. Cronkhite, 158, 143; C. Baker, 144; V. Workman, 152; D. Harook, 189, 169, 168; C. Ramsey, 179; B. VanGorder, 146; R. Bushway, 141; B. Halst, 149; B. Wolfgang, 143, 146; N. Hill, 144; D. Ballet, 147; G. Shank, 144; M. Erskine, 143, 150; C. Kielwasser, 146; R. Cook, 145; N. Hohn, 144; B. Roberts, 170, 164; J. Edick, 160; O. Williams, 181; E. Williams, 155; M. Ritz, 145; L. Stuewe, 154; S. Ritz, 148; M. Kozminski, 144, 151; M. Moore, 144; H. Smith, 140; J. Smith, 158; M. Wojcichi, 143; R. Musbach, 148, 157; P. Wurster, 153, 183, 145; L. Hollo, 155; A. Classon, 144; K. Stanchfield, 163; B. Kies, 146; S. Bauer, 173

Tri-City Mixed

Standings as of Jan. 28

W	L
Fitzsimmons Exc.	100 47
Central Fibre	96 51
Pinnacle Engineering	92 55
Ken's Glass	90 57
Chelsea Big Boy	87 60
Williams & Liszynai	87 60
Rod's Roofing	77 70
Inverness Inn	71 76
Mitchell Building	71 76
Seitz's Tavern	69 78
Hanewald & Frey	69 78
Portage Hardware	66 81
Palmer Ford	63 84
Back Door Party Store	61 86
Associated Spring	59 88
William's Carpet Serv	59 90
Wolverine Bar	55 92
Jose & Sannes	53 94

500 series, men: J. Baker, 608; G. Burnett, 551; R. Clark, 550; V. Hafner, 510; J. Harook, 544; C. Myers, 551; L. Schneider, 512; J. Tindall, 599; R. Williams, 512.
200 games, men: J. Baker, 202, 231; R. Clark, 204; G. Burnett, 231; C. Myers, 202; J. Tindall, 201, 201; R. Williams, 201.
450 series, women: M. Biggs, 476; S. Clark, 494; K. Fletcher, 456; M. Gipson, 456; P. Harook, 467; E. Hinz, 483; B. Kunzelman, 484; M. Matthews, 450; J. Schulze, 464; S. Thurkow, 464; E. Tindall, 452; M. Westcott, 519.
150 games, women: C. Baker, 160; M. Biggs, 203; S. Clark, 163, 161, 170; J. Collins, 168; K. Fletcher, 154, 175; M. Gipson, 159, 160; J. Hafner, 171; D. Hanewald, 154; P. Harook, 165, 159; E. Hinz, 158, 165, 160; T. Jose, 155; B. Kunzelman, 155, 188; V. Matthews, 180; J. Modrzewski, 157; J. Smith, 157; C. Stoffer, 154; J. Schulze, 171, 160; S. Thurkow, 165, 172; E. Tindall, 154, 175; M. Westcott, 155, 169, 195; T. Williams, 180.

Telephone your club news to 475-1371

Chelsea Lanes Mixed

Standings as of Feb. 1

W	L
Spring Oak Greenhse	103 51
FUBAR'S	100 54
VFW	100 54
Ann Arbor Centerless	87 67
Accra Gage	86 68
DeWolfe Excavators	76 78
Fireballs	75 78 1/2
Two Plus Two	75 79
Hawley Truck Repair	75 79
Turkeys	75 79
Federal Screw Outlaws	73 81
Chelsea Sofspra	71 83
White Lightning	69 77 1/2
Fox Point Flashes	68 86
Bottoms Up	66 88
Hank's Marina	66 88
North Lake Duniprs	62 92
J2-D2	58 96

Women, 425 series and over: D. Alexander, 432; L. Behnke, 471; E. Lee, 441; D. Keezer, 447; N. Keezer, 466; D. Hawley, 506; B. Torrill, 470; S. Kulenkamp, 526; J. Norris, 505; D. Verwey, 418; S. Whiting, 450; H. Scriptor, 448; J. Kaiser, 487; M. Stafford, 481; J. Jose, 470; C. Hepburn, 425.
Men, 475 series and over: L. Keezer, 517; A. Sannes, 500; A. Hawley, 487; A. Torrice, 478; W. Kulenkamp, 517; R. Whiting, 491; R. Zatorski, 580; M. Spears, 519; F. White, 505.

Women, 150 games and over: D. Alexander, 160; D. Vasher, 153; L. Behnke, 153, 169; E. Lee, 154; D. Keezer, 169; N. Keezer, 180; D. Sannes, 160; D. Hawley, 190, 167; B. Torrice, 163, 159; J. Norris, 152, 189, 164; D. Verwey, 169, 155, 187; S. Whiting, 192; H. Scriptor, 160, 162; J. Kaiser, 167, 185; M. Stafford, 155, 167, 159; J. Jose, 187; D. Oesterle, 179; J. Cook, 151; C. Hepburn, 174.
Men, 175 games and over: D. Williams, 180; N. Lee, 189; L. Keezer, 180; A. Sannes, 184; A. Hawley, 178; W. Kulenkamp, 179; R. Whiting, 180; D. Torrice, 179; R. Zatorski, 181, 189, 210; T. Stafford, 200; M. Spears, 180, 188; R. Cook, 190; R. Herrst, 176; F. White, 188.

Prep League

Standings as of Feb. 2

W	L
Jacquars	44 22
Chelsea Wild Cats	40 26
Five Musketeers	40 26
Dana Chargers	38 27 1/2
The Pros	29 37
The Strikers	29 37
X Marks the Spot	24 41 1/2
Midnight Bowlers	17 49

Games 100 and over: T. Harook, 115, 135; J. Koch, 105, 108; C. Schulze, 132, 135; S. Hurn, 108; P. Fletcher, 156; J. Toon, 146, 126; D. Collins, 106; D. Dettling, 157, 143; P. Shures, 100, 124; G. Boyer, 146, 107; D. Thompson, 160, 155; David Boote, 136; Dean Boote, 108; E. Zink, 117; M. Ryan, 135; J. Samek, 105; J. Jedele, 133; T. Weir, 101, 148; K. Thayer, 183, 126; R. Derby, 113; M. Ryan, 132; R. Yeutter, 117, 105; M. Ahrens, 162, 102; D. Cox, 112; J. O'Bryan, 117, 104.
Series 200 and over: T. Harook, 250; J. Koch, 213; C. Schulze, 287; P. Fletcher, 255; J. Toon, 272; D. Dettling, 300; P. Shures, 224; G. Boyer, 253; D. Thompson, 315; David Boote, 229; E. Zink, 203; M. Ryan, 230; J. Samek, 202; J. Jedele, 232; T. Weir, 249; K. Thayer, 309; Matt Ryan, 210; R. Yeutter, 222; M. Ahrens, 264; J. O'Bryan, 221.

Junior Swingers

Standings as of Feb. 2

W	L
Pirates	56 32
No Minds II	53 35
D.R.E.A.D.	50 37 1/2
Super Strikers	49 39
Chompin' Beavers	47 41
Chelsea Goofoffs	42 45 1/2
Misfits	38 50
Twiggs Harem	30 58

Girls high game, 150 and over: D. Alexander, 162, 153; C. Fahrner, 162; K. Forner, 152.
Boys, high game, 170 and over: J. Blanchard, 192; R. Gorny, 178; D. Boyer, 173, 183, 182; M. Selwa, 171, 176; D. Herman, 172; S. Wilson, 193; D. Alber, 175.
Boys, high series, 450 and over: J. Blanchard, 458; M. Selwa, 486; D. Boyer, 538; D. Alber, 472.

Senior House League

Standings as of Feb. 4

W	L
Village Motors	31 4
K. of C.	28 7
Frank Grohs Chevrolet	28 7
Washtenaw Engin	26 9
Schneider's Grocery	24 11
Holsworth's	22 13
Steele's Heating	19 16
Freeman Machine	18 17
VFW 4076	18 17
Kilbreath's	17 18
Central Fibre	17 18
S. J. Custom	14 21
C. & J.	13 22
McCalla Feeds	12 23
Bauer Bullders	9 26
Walt's Barber Shop	7 28
Chelsea Lumber	7 28
Deans Burro	5 30

525 and over series: J. Ladley, 582; K. Sprague, 582; D. Barnhill, 526; M. Kiedner, 587; J. Harook, 571; R. Kiel, 529; M. Poertner, 541; D. Schleede, 525; R. Spaulding, 547; J. Arnold, 568; C. Fore, 532; J. Eder, 525; K. Unterbrink, 570; F. Modrzewski, 579.
210 and over games: J. Harook, 227; D. Alexander, 228; C. Fore, 214; K. Unterbrink, 212.

Nite Owl League

Standings as of Feb. 5

W	L
Wash. Crop Serv.	101 53
Chelsea Lions Club	98 56
Thompson Pizza	95 59
Norm's Body Shop	90 64
Ross Automotive	88 66
Hanco Sports Center	84 70
Interstate Trans.	82 72
Franklin Masonry	80 74
K. of C.	75 79
Parts Peddler No. 1	71 83
Team No. 16	67 87
Mayer Agency	66 88
Broderick Shell	64 90
Unit Packaging Corp.	64 90
Parts Peddler No. 2	55 99
Polly's Market	52 102

600 series: G. Hansen, 607.
500 series: L. Miller, 531; B. Snyder, 523; G. Huehl, 520; J. Nicola, 536; S. Strock, 509; D. Beaver, 516; W. Brown, 568; B. McGibney, 519; D. Thompson, 501; M. Cook, 507; J. Bullick, 503; M. Schmaidt, 513.
200 games: G. Hansen, 234; J. Eliola, 234; B. Snyder, 200; W. Brown, 202.

Varsity Basketball

Feb. 8—Dexter	A
Feb. 12—C. Airport	A
Feb. 15—Saline	H
Feb. 19—J. Northwest	H
Feb. 22—Lincoln	A
Feb. 28—Willow Run	A
Feb. 29—Mason	H

Home games follow JV games

CUSTOM
BUMPING and PAINTING
FREE ESTIMATES - ALL MAKES
Get the Best for Less!
FRANK GROHS CHEVROLET
Phone 426-4677 Dexter, Mich.

CHELSEA ROD & GUN CLUB NOTICE

Dues are due on or before Feb. 12, 1980. This date has been moved up one month from March.

After Feb. 12, 1980 a penalty will be assessed.

CHELSEA ROD & GUN CLUB

GEORGE PADGHAM

SERVING SANDWICHES

from 11:00 a.m. till 2:00 a.m. Mon. thru Sat.

BEER & WINE CARRY OUT FOOD CARRY OUT

Open Sunday 12:00 Noon Till 11 p.m.

MARK IV LOUNGE

1180 M-52 Phone 475-1951 Chelsea

COME ON IN AND BOWL

OPEN BOWLING HOURS:

Monday through Friday
11 a.m. - 6 p.m.

Saturday, 11 a.m. - 2 a.m.

Sunday, Noon to 5:30 p.m.

CHELSEA LANES, Inc.

1180 M-52 Ph. 475-8141

McCalla Feed Service

Ph. 475-8153

Spiker of the Week



SUE BRANHAM, former Saline spiker, is this week's featured varsity volleyball player. Co-captain Branham led in the Bulldog victory over Pinckney Monday with 19 serves. Coach

Judy Bottum says that Branham's previous experience on the crack Saline squad has helped Chelsea to improve greatly from last year.

Volleyball Teams Defeat Pinckney

A real psychological battle between volleyball squads from Chelsea and Pinckney saw Chelsea emerge victorious Monday evening, 15-7, 9-15 and 17-15. According to Coach Judy Bottum, it all came down to the close final match. Chelsea had a huge lead, which gradually dwindled down to a 15-14 lead and then a 15-15 tie. Careful play brought the Bulldogs their needed two points and the team beat Pinckney, who defeated them earlier in the season.

Excelling for the defense were

Cindy Gerstler and Sandy Bushway. Sue Branham led in serves with 19, followed by Kelly Hense with 17. Hense also had 25 sets and Patty Rawson contributed 17 spikes.

On the JV side, the team also defeated Pinckney, 6-15, 15-3 and 15-12. Defensive leaders were Kim Forner and Amy Poljan. Servers Cathy Doll and Cindy Connell were standouts, as were setter Diane Bareis and spiker Venus Roberts.

The varsity is now 3-6 and the JV 4-5 on the season.

Recreation Basketball Action in 2nd Week

In the second week of play in Chelsea Recreation Department Adult Basketball this week, two teams, Chelsea State Bank and Ann Arbor Centerless, are on top of the league with 2-0 records. Centerless defeated Thompson's Pizza last week by a score of 73-50. John Mann led Centerless with 18 points. Dean Thompson had 19 points for the losers.

Dana edged Union Savings Bank, 62-60. Dana was led by Dan Krysis with 23 points. Union Savings' Rick Snyder dropped in 13. Chelsea State Bank almost doubled up on Banner, Spring and 4-Slide, defeating them 80-47. Dave Guenther had 19 points for the victors, while Mike Weber scored 16 for Banner.

Led by Mike Cannon with 16 points, JMC outpointed Garnett's, 70-40. Top scorer for Garnett's was Steve Kinser with 20.

Scores by quarters:

Centerless	11	15	16	22-73
Thompson's	13	11	12	15-50
Union Bank	8	13	16	21-60
Dana	23	8	11	16-62
Chelsea Bank	14	22	16	18-80
Banner, etc.	8	9	8	22-47
Garnett's	8	6	12	14-40
JMC	18	13	16	23-70

League Standings

	W	L
Chelsea Bank	2	0
Centerless	2	0
JMC	1	0
Rocking M Ranch	1	0
Dana	1	1
Union Bank	1	1
Banner, etc.	0	2
Thompson's Pizza	0	2
Garnett's	0	2

CAUSES OF FIRES
One out of five fires in the United States is caused by matches and smoking, the Insurance Information Institute reports. Another 20 percent are caused by the misuse of electricity and by faulty electrical equipment.

Culligan
filtered
conditioned
SOFT WATER

LIKE HAVING A FAMILY SERVANT!

You'll find that you can clean kitchens and baths in a fraction of the time. Eliminates dulling hard water film... helps keep everything cleaner longer. Saves on soaps and cleaners.

ASK THE MAN WHO CARES! SAY
HEY CULLIGAN MAN!

2321 JACKSON AVE
ANN ARBOR
662-5665

Contamination?

(Continued from page one)

afternoon, another department representative, Richard Yarmain, said the initial tests yielded no conclusive results and that further samples had been taken.

Yarmain said that the DNR and a private firm were also taking well samples for analysis.

Several residents report that they have been advised by the DNR not to use the well water for drinking or cooking until positive findings are available.

Johnson stressed that the legal aspects of the situation are not nearly as crucial as insuring that Sharon township residents face no danger from the wastes.

"Action needs to be taken now," he said. "They can worry about the legal part later. This has been going on since at least November. Those barrels need to be removed from the site. They may be empty, but I don't know."

If the recently-taken water samples reveal levels of contamination, Johnson said there are several steps that may be taken.

"If something is found in the wells, we will assess the significance. There are maximum recommended levels, and if it was above these levels, then we'd have to see what potential effects it would have."

"Unfortunately we don't know very much about low levels of contamination. If it shows contamination now, it will be there for some time."

Johnson said if contamination is found, residents would probably first be advised to dig their wells deeper.

"Of course," he added, "we'd

have to identify how wide an area this would cover. We'd have to determine the flow of ground water and that gets pretty involved."

According to Sharon township Supervisor John Savage, representatives of several involved agencies will be present at the Thursday, Feb. 7, meeting of the township board to answer concerns of residents. According to Savage, Washtenaw County Health Department Director, Dr. John Atwater, will be present at the 8:30 p.m. meeting, together with representatives from DNR and the Washtenaw County Prosecutor's Office.

Township treasurer Herbert Jacob expressed some concern that the township had not been apprised that an investigation was underway in the area. "We're the ones the people come to for answers," he said.

Referring to the agencies involved in the investigation, Jacob said: "They've got a lot more clout than we have, but we're going to keep on their tails until something is done."

Representatives from Sycor, Inc. and a Sycor maintenance supervisor, who was also named in the charges, will appear at a pre-trial hearing in Ann Arbor on Feb. 28.

HURRICANE DEATHS
Hurricanes have taken more than 5,500 lives in the United States in the past 50 years, according to the Insurance Information Institute. The worst year was 1928, when 1,836 persons died in hurricanes.

Let's fight inflation together.

This year we'll prepare your 1040A Short Form for only \$7.50*. Any state or local return is extra. So... come to H&R Block—let's fight inflation together.

H&R BLOCK

THE INCOME TAX PEOPLE

8118 MAIN ST., DEXTER
PH. 426-4313

Appointments available, 9 to 6, Mon. thru Sat.

FARM FOOTWEAR THAT FITS
*SIZES 6-16
WIDTHS A-H
*Not all sizes in all widths.

We Stock Safety Shoes

RED WING

VOGEL'S & FOSTER'S
Phone 475-1606 Chelsea, Mich.

ROBERTS PAINT & BODY
"We do our best to satisfy"
20416 Old US-12 West
Chelsea, Mich.
Ph. 475-1149
Open 8 a.m.-5 p.m. Daily

Now at **HEYDLAUFF'S**

SAVE ENERGY!
The most energy-efficient no frost refrigerator GE has ever made! Rating is only 83 kwh per month. Let it start saving energy for you!

Optional Automatic Icemaker Cubes always available. No trays to fill. No spilled water.

Energy Saver switch in normal position helps cut operating cost.

SAVE **\$40**

Energy Saver Seventeen

A breakthrough in energy conservation!

Big 17.15 cu. ft. no-frost refrigerator has a large 4.73 cu. ft. freezer, yet is only 30 1/2" wide. Energy saving Urethane foam insulation conserves storage space and helps cut shopping trips. Split-level adjustable shelves for storage flexibility. Easy-to-clean, tough, Permalon II interior.

*Based on laboratory tests using Government psi with the Energy Saver switch in Normal position. Ac consumption may vary with use.

NOW ONLY \$53.95

HEYDLAUFF'S
113 N. Main St., Chelsea Ph. 475-1221



30-MONTH CERTIFICATE

The Certificate that is changing the way America Invests.

New High Interest 30-month Certificate.

Our new 30-month Certificate, earning an exceptional high rate of interest, calls for only a \$500 minimum deposit.... not \$10,000.

The interest rate changes monthly, based on U.S. Treasury Securities. And, the rate

you receive for the month your deposit remains in effect for the entire 30-month period... guaranteed. No concern every six months about earning less interest.

High rate of interest, reasonable term savings... a great return.

THIS MONTH'S RATE:
10.40%

CHELSEA STATE BANK

Member F.D.I.C.

CSB

By law a penalty must be assessed for early withdrawal of time fund.

Swimmers of the Week



TOM GAUNT AND PAUL SCHUMANN are featured swimmers this week. A junior, Gaunt has qualified for the state meet in the 200 medley relay, 200 IM and 200 backstroke. He also holds varsity records in all three events. Paul Schumann against Brighton this week scored best times in both the 50 free (:26.6) and 500 free (5:47.5). The previous week he also lowered his best times in the 100 and 200 free races to 2:11.8 and :59.1 respectively.

District Court Proceedings

Week of Jan. 28-Feb. 1
Judge Kenneth Bronson
Presiding

Ronald Cooch pled guilty to open intoxicants. Sentenced to one day on probationary work program and one day in Saline Hospital Alcohol Program. No fines or costs.

Michael Riggs pled guilty to having no operator's license on his person. Fines and costs, \$45. Michael W. Rowe was sentenced for driving without a license to serve three days in the Washtenaw County Jail, suspended. Fines and costs, \$150.

Richard Stoll was sentenced for driving under the influence of liquor to six months probation, no drinking. Attendance at Alcohol Education Program and Washtenaw County Council on Alcoholism. License restricted for six months, to and from work, employment and WCCA. Fines and costs, \$350.

Leroy Wylie was sentenced for unlawful storage of waste to pay \$50 fines and costs.

Scott Robinson pled guilty to violation of probation. Sentenced to six days on probationary work program.

Arnold O. Vasher pled guilty to driving without a license. Sentenced to one day on probationary work program. Fines and costs, \$100.

Mary Moore Bird pled guilty to expired plates. No fines or costs, \$5 state judgement fee.

Mary Moore Bird admitted responsibility to speeding, with explanation. Fines and costs, \$25.

James M. Greene pled guilty to driving without a license. Sentenced to attend Washtenaw County Driving School and pay \$150 fines and costs or serve five days.

Mary Ann Bell pled guilty to not acquiring a Michigan operator's license. Sentenced to three days in the Washtenaw County Jail, credit for time spent. Pay \$50 fines and costs or add three days.

Paul Joseph Loos was sentenced for impaired driving. Fines and costs, \$400.

Daniel R. Mesko was sentenced for impaired driving. Fines and costs, \$250.

Unadilla Presbyterian Church Will Observe Its 141st Anniversary

With a special coffee hour and birthday cake this Sunday, the First Presbyterian Church of Unadilla will celebrate its 141st anniversary as a congregation.

According to one book of minutes, the First Presbyterian Church of Unadilla was founded near Feb. 4, 1837 with eleven members. In another book, however, the date for the founding is given as Feb. 11, 1839. Reasons for the discrepancy are not clear, but the church has chosen to use the second date in fixing its 141st anniversary.

In May 1844 the church voted to erect a church building, which stood until June 27, 1914, when a tornado destroyed the edifice. Sept. 21, 1914 a contract was let to L. N. McClear to build a new church — specified to be raised in 60 days at a cost of \$1,000. This is the building that serves the congregation today.

The new church was dedicated Dec. 20, 1914 by the Rev. Brooks of Howell. Members of the building committee were Sarah Hadley, Willis Pickell, Josie Cranna, A. J. May and the Rev. Berry.

According to Ms. Peggy Hall, Lay-Preacher, who is the present pastor of the church, Unadilla Presbyterian has had a long history of ecumenism and broad-mindedness.

Two stories, recounted by one of the older members of the congregation, point to unusual positions taken by a church in the 19th century. The congregation, it is said, assisted in the Underground Railroad, helping escaped slaves to reach freedom in Canada. Also, a story goes, the Missionary Society of the church didn't follow the traditional all-female pattern and admitted men as members.



ANNIVERSARY CONGREGATION: This Sunday, members of Unadilla's First Presbyterian Church will light the candles on a birthday cake for their church, which was found-

ed 141 years ago. The present church building was built in 1914 at a cost of \$1,000 after a tornado destroyed the previous structure, built in 1844.

Neither story is documented in church records, Peggy Hall admits, but neither are they disproven in any way.

As far as ecumenism goes, Unadilla Presbyterian at one time acted in co-operation with the Methodist church that was once located in Unadilla. Both congregations held a joint or union Sunday school until Oct. 6, 1929 when it was disbanded.

In addition, the Methodists attended worship in the Presbyterian church when their pastor had to preach in other Methodist churches in the area. Presbyterians also worshipped in the Methodist church on occasion, but it isn't clear whether their minister also preached to other congregations and was absent for that reason.

In 1893, the ladies of the church raised funds to pay for the purchase of Noble Hall from Sylvester Noble. The upper floor was used for a skating rink and auditorium, and the lower for a stable for the horses of church members.

Other interesting purchases include the procuring of the church bell in 1889. At a later time, with no reason given, the congregation decided that the church bell should not be rung. Today it is regularly sounded for worship services on Sundays.

It was voted by the congregation in February 1915 to sell 25 singing books at 20 cents each to go into the building fund. Another reference to church finances in the historical records states that, in 1879, a motion was made and carried, instructing the clerk of the trustees to post a notice in the hall of the church stating that all slips (seats) of the church were free for anyone to sit in except those that are cushioned. No mention is made of the cost of a cushioned pew.

This month, a chalice and pitcher that were used at the church at least as far back as 1937 were returned to the congregation. When Barney Roepcke was ordained into the Presbyterian ministry in September of that year, the proud congregation gave him the chalices and pitcher from the communion set. Mr. Roepcke, now a minister in the north of Michigan, returned them in January, feeling that the local church should have them.

Mention is made in the records of a communion set as far back as 1878, but it is not known if this is the set that Mr. Roepcke recently returned.

The historical record also reveals that in 1892 the Session took action to expel a male member from membership in the church because of his behavior.

Ms. Hall stresses that while the congregation enjoys looking back at the way things used to be, members are "looking with positive and hopeful eyes toward the future in hopes the church can continue to make a contribution."

Worship this Sunday will be held at 11 a.m. as usual, with guest preacher Dr. John Chandler, minister-at-large of the Kalamazoo Presbytery, to which the Unadilla church belongs.

A special bulletin used at the service was designed by a local member and is suitable for framing to remember the occasion.

After worship, a "talk-back" session will be held, giving the

congregation a chance to discuss points of Dr. Chandler's sermon.

A coffee hour, featuring a specially-decorated birthday cake, will follow worship. An inter-generational liturgical class of the church, the Learning Together Club, will provide the refreshments.

Ms. Hall extends a special invitation to neighboring churches to send representatives to the Sunday anniversary service.

NOTICE

OUR NEW DRIVE-IN HOURS WILL BE:

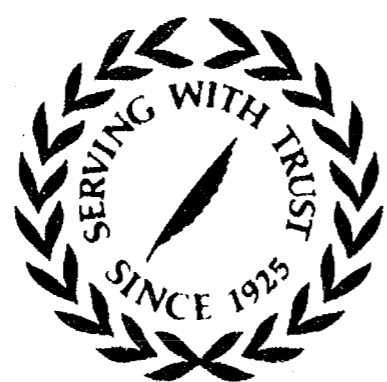
**8:30 a.m. — 6 p.m.
Monday through Friday
and
9 a.m. to noon on Saturday***

We want to do anything we can to make banking at Ann Arbor Trust easy for you.

So, stop by soon and make Ann Arbor Trust your full service bank.

*Lobby hours:

- 9 a.m.-4 p.m. Monday through Thursday
- 9 a.m.-6 p.m. Friday
- 9 a.m.-noon Saturday



CHELSEA BANKING OFFICE
ANN ARBOR TRUST COMPANY

1478 Chelsea-Manchester Road • Chelsea, Michigan 48118 • Phone 475-9154

MEMBER FDIC

MAGNAVOX



Automatic Fine Tuning
19" COLOR PORTABLE



Model 4168 — with 19" diagonal 10 3/4" in-line picture tube.

SAVE \$20

Big set performance in a compact, portable size — and now at a surprisingly low cost. Special AFT circuitry "locks-in" station signals to bring you accurately tuned pictures on UHF or VHF channels. Other features include a highly reliable 100% solid state chassis; plus, electronic voltage regulation to provide stable operating conditions — even in "brownout" situations. Enjoy hours of viewing pleasure with this exceptional Magnavox Color TV value!

NOW \$399⁹⁵

QUALITY IN EVERY DETAIL
MAGNAVOX
WE MAKE STAYING HOME FUN

COME IN...BUY NOW!

HEYDLAUFF'S

113 N. Main St., Chelsea Ph. 475-1221

MASONRY
FIREPLACES
BRICK and BLOCK
LAYING

FREE ESTIMATES

DENNIS GAREN
Ph. (313) 475-2584

Main body of the document containing multiple columns of land sale listings. Each listing includes details such as 'Sale No.', 'Description of Parcel', 'Acres', 'Total Taxes', and 'Year for Delinquency'. Listings are organized by township: FREEDOM TOWNSHIP, LYNDON TOWNSHIP, MANCHESTER TOWNSHIP, NORTHFIELD TOWNSHIP, and NORTHFIELD TOWNSHIP (Town 1 South, Range 8 East).

Table of real estate listings with columns for Sale No., Description of Parcel, Acres, Total Taxes and Charges Due, and Sale Date. Listings are organized by township and range, including Pittsfield, Salem, Scio, Superior, and Sylvan.

Table with multiple columns listing property details for SYLVAN TOWNSHIP, YPSILANTI TOWNSHIP, and CITY OF ANN ARBOR. Columns include Sale No., Description of Parcel, Acres, Years for Which Delinquent, Total of Taxes and Charges Due in Said Years, and Dollars and Cents.

Table with multiple columns listing property details for various cities including Ann Arbor, Ypsilanti, and Saline. Columns include Sale No., Description of Parcel, Acres, Total of Taxes and Charges Due, and Sale Date. The table is organized into sections for different cities and specific areas like 'Hills Addition' or 'Tappan Park'.

Ads Taken Until 5 p.m. Monday

PUT IT IN THE WANTED FOR RESULTS

Just Phone 475-1371

Automotive 1 | Automotive 1 | Farm 2 | For Sale 4 | Real Estate 5 | Real Estate 5 | Animals, Pets 6

BODY SHOP
COMPLETE FULL TIME ESTIMATES AVAILABLE

PALMER FORD
222 S. Main 475-1301
401f

SEE **TOM DAULT**
at **Rampy Chevrolet**
for your best deal in new or used cars and trucks.
Ph. 663-3321 or 475-2830

79 MONTE CARLO — Factory 1-tops, automatic, power steering, power brakes, cruise, tilt-air, AM-FM 8-track stereo, rustproofed. Must sell. Best offer. Ph. 498-2013 after 7 p.m. x201f

Complete Body Shop Service
FREE ESTIMATES
Contact Walter Steinhilb
Formerly of Westland Collision

Faist - Sprague Buick - Olds, Inc.
475-8664 x231f

FOR SALE — 1975 Buick LeSabre, power steering, power brakes, 4 door, new shock absorbers, exhaust. \$1,000. Ph. 475-9101. Eves: 475-1469. x261f

1978 CHEVROLET CAPRICE Estate station wagon, 9-passenger. Loaded. \$4,600. Ph. 426-3588. x35-3

1979 CHEVY PICK-UP — 350 V-8, 4-wheel drive, 4-speed, Posi-Traction, AM-FM 8-track, 9,000 miles. Excellent condition. \$6,400. Ph. 475-9705. x35-2

1974 PLYMOUTH BARRACUDA — 318, automatic, power steering, power brakes, buckets, console, radial tires, rally wheels and hood plus more. Good condition, must sell. Ph. 475-9538. x35

1975 AMC MATADOR, 4-door, 360, power steering, power brakes, air conditioning, \$1,500. Ph. 475-8264 between 10 and 3. x35

1973 SUBARU WAGON — Front wheel drive. Good transportation for \$950. Ph. 475-2664 after 5. x36-2

76 DODGE Sportsman Royale van. 318 cu. in., p.s., p.b., air cond., Michelin radials, 2 6-gal. fuel tank, new heavy duty battery. 46,000 miles. One owner. \$3750. Ph. 475-1495. x35-2

JEEPS, 400, 375, \$55. Trucks, \$50. Government surplus merchandise. For more information call 1-312-742-1142, (ext. 1328). x37-4

1977 TOYOTA CHINOOK Mini-motor home. Over 25 mpg, sleeps 4. Includes furnace, range, converter, dual batteries, 3-way refrigerator, AM-FM stereo cassette, excellent cond. Only 23,000 miles. Priced to sell at \$6,950. Ph. 475-7038. x35-2

Historical Milestones
On Jan. 5, 1914, 65 years ago, Henry Ford rocked the industrial world by proclaiming a \$5-a-day minimum wage, doubling existing pay scales. January also marks the beginning of the anniversary year of Ford's favorite project, Greenfield Village and the adjacent Henry Ford Museum in Dearborn. Dedicated 50 years ago in October 1929 by such dignitaries as Thomas Edison and President Herbert Hoover, the institution Ford established was to grow and become the world's largest indoor-outdoor museum of Americana.

Please Notify Us In Advance of Any Change in Address

OPEN HOUSE AT 17200 WATERLOO RD.
(Near Sugarloaf Lake)

SAT. & SUN., 12:00 - 5:00 p.m.

- ★ 3 BEDROOMS
- ★ 2 FULL BATHS
- ★ FULL BASEMENT
- ★ FIREPLACE
- ★ ANDERSEN WINDOWS
- ★ MAXIMUM INSULATION

BRAND NEW - \$63,900

10 1/4 % Financing Available

Maintenance Free Energy Efficient

Weber Homes
(Owner/Builder)

475-2828, Office 475-9258, Home

MILITARY TRAILER — 2 5/16 ball, Heavy duty with sides, \$400. Ph. 475-8786. x35

77 PLYMOUTH FURY — 2-door, 318, power steering, power brakes, air conditioning, rear defog, AM-FM cassette stereo, \$2,800 firm. Ph. 475-8538, 9 a.m. to 3 p.m. x36-2

1978 OLDS CUTLASS Brougham, fully equipped, excellent condition, wire wheels. Ph. 475-7678. x37-3

1972 CHEVROLET — Very dependable. Air conditioning, \$600 firm. Ph. 1-(517) 851-8546 evenings, 475-1368 day, ask for Dave Lincoln. x35

76 FORD SUPER CAB, V-8, automatic, no rust, factory cap, must sell. Ph. 426-4909. x35

FACTORY REBATES Up to \$700 '79 Demos and New Cars

Demos

79 CHALLENGER, 2600 c.c., 5-speed, AM-FM stereo 8-track, power windows, p.s. SAVE

79 ST. REGIS 4-dr., 360, air, stereo cruise, tilt, \$300 rebate. SAVE

Factory Officials Cars

79 CHRYSLER Newport 4-dr., 318, auto., p.s., p.b., air, 6,120 miles. \$6195

79 RAMCHARGER 4-wheel drive, 318, auto., p.s., p.b., air, cruise, stereo, 9,111 miles. \$7395

79 VOLARE 4-dr., 6-cyl, auto., p.s., p.b., vinyl roof, air cond., 5,200 miles. \$5895

Village Motor Sales, Inc.
CHRYSLER — DODGE PLYMOUTH — DODGE TRUCKS
Phone 475-8661
1185 Manchester Rd., Chelsea
Hours: 8 a.m. to 5:30 p.m.
Tues. thru Fri. Until 8 Monday
Saturday 9 to 12 x351f

Used Trucks

78 CHEVY LUV, 1800 cc., 4-speed, step bumper, low mileage. \$4295

78 DODGE W-150, 318, auto., p.s., p.b., AM radio, 4-wheel drive, snow plow, rustproofed, camper cover, 22,600 miles. \$4995

77 DODGE W-150 pick-up, 4-wheel drive, 318, auto., p.s., p.b., 21,204 miles. \$4295

Quality Used Cars

79 HORIZON TC-3 coupe, 4-speed, AM-FM, 5,910 miles. \$5195

78 ARROW Coupe, 1600, 4-speed, one owner. \$3395

77 DODGE Monaco Brougham coupe, 318, auto., p.s., p.b., one owner. \$1995

76 CORDOBA, 318, auto., p.s., p.b., leather buckets. \$2695

75 CHRYSLER New Yorker 4-dr., V-8, auto., p.s., p.b., air, cruise. \$1795

73 OLDS Custom Cruiser wagon, V-8, auto., p.s., p.b. \$595

68 PONTIAC 4-dr., V-8, auto., p.s., p.b. \$195

Village Motor Sales, Inc.
CHRYSLER - DODGE PLYMOUTH - DODGE TRUCKS
Phone 475-8661
1185 Manchester Rd., Chelsea
Hours: 8 a.m. to 5:30 p.m.
Tues. thru Fri. Until 8 Monday
Saturday 9 to 12 x351f

1976 GMC Jimmy, low mileage, excellent condition. \$4,200. Ph. 428-7995 after 4 p.m. x36-2

THRIFTY FARMERS use spray adjuvants with their crop spraying. For information phone Ray, (313) 475-8909 anytime. x35

Recreation Eqpt. 3

Planning A Party? Reception or Special Get-Together?
Phone 662-1771 days

Zemke Operated Machines
For Rental Of Music Machines Juke Boxes.
x121f

78 SCORPION 440 Whip TK, 150 miles, \$1,500 or best offer. Ph. 475-3189 or after 5, 995-0386. x35-2

For Sale 4

SUNFLOWER SEED — 50-lb. bag, \$8.50, 25-lb. bag, \$4.50. Also cracked corn and millet. Ph. 426-8404. x211f

DINING ROOM — Smoked glass top table with wooden frame and 4 matching chairs. Ph. 475-8745. x36-2

INFANT GIRLS CLOTHES, sizes 12 and 18 months, cute, perfect condition. Sweaters, shirts, crawlers, dresses, etc., \$25. Ph. 475-7854. x35

A & S SUPPLY
Cut Your Own and Save

FIREWOOD by the federal cord, 4'x4'x100" delivered in 100' lengths. Also available: 4'x8'x18" face cords. Quantity discounts. Please call 971-7188. x35-2

FRANKLIN STOVE — Brand new, never used. \$200. Ph. 426-3349. x35

BE GENTLE, be kind to that expensive carpet, clean with Blue Lustre. Rent electric shampooer, \$2. Chelsea Hardware. x35

PLAY-PEN living room group, 8 months old. Burgundy or rust color. Velvet upholstery. Paid \$800 new. Asking \$500. Call Carl's Cleaning Service, 475-8007. x35

FRESH BROWN EGGS — 12075 Island Lake Rd., Dexter 426-2782. x41-8

A & S SUPPLY
Do It Yourself and Save

BARN WOOD, lumber, fencing materials, cedar fence posts, treated lumber, posts and poles, landscaping timbers. Please call 971-7188. x35-2

ASHLEY WOODSTOVES — Hackney Hardware, Dexter. Ph. 426-4009. x211f

FIREWOOD CUT and split. Two sizes, face cords and full cords, delivered. Ph. 428-8229. x251f

FIREWOOD — Seasoned, split hardwoods. \$35 face cord, delivered. Dave, 475-7494. x311f

LARGE FRANKLIN FIREPLACE with base, Heat-O-Lator, and all chimney pipes. Must see to appreciate. \$550. Call 475-3316. x35

AT LEAST Your carpets can be dry. Dry clean them with HOST. Rent the HOST machine. Merkel Home Furnishings, Chelsea, 475-8621. x35

REDMAN TOOL AUCTION
Friday, Feb. 15
6:30 p.m. at McNew's Auction Gallery
2207 W. Michigan Ave., Jackson, Mich.

Floor jacks, drill presses, metal band saws, compressors, air tools, tool chests, porta-powers, chargers, wrench sets, socket sets. Over 150 different items.
Door prize, 6:30 p.m.

Redman Tool Auctions
Auctioneer Bob Redman
517-688-3386 x36-2

SPLIT OAK and hickory for sale. \$35 face cord. Ph. 426-2864 or 426-3784. x36-4

SPLIT RED OAK — \$35 face cord. Chelsea-Dexter area delivered. Ph. 475-2697. x35-2

MICHIGAN CERTIFIED SEED — Marjiners seed oats, 4 varieties soy bean seed. Bred Farms, Britton, Mi. 49229. Ph. (517) 451-4010 or (517) 423-5663. x341f

VACUUM CLEANERS
Authorized Electrolux sales and service.
James Cox
428-8444, or 428-8686
118 Riverside Dr., Manchester 481f

SEE US for transit mixed concrete. Klumpp Bros. Gravel Co. Phone Chelsea 475-2530, 4920 Loveland Rd., Grass Lake, Mich. x401f

WEDDING STATIONERY — Prospective brides are invited to see our complete line of invitations and wedding accessories. The Chelsea Standard, 300 N. Main. Ph. 475-1371. 81f

PLANNING A WEDDING? Graduation? Let us handle your liquor and beverage needs. Dexter Party Store. Ph. 426-3828. x431f

CARPETING
Discontinued numbers, ends of rolls, in many colors and sizes at cut rate prices.
Nearly 100 pieces to select from.

MERKEL BROS.
31f

ALVEREZ GUITAR, \$100. Ph. 475-8068. 38-4

12" CHAIN SAW — Few hours. Ph. 475-9327. x35

3 NEW FIRESTONE double steel belted radial tires GR 78-15. Ph. 475-2879. x35

TWO OCCASIONAL living room chairs. In good condition. Ph. 475-1082 after 6 p.m. x35-2

FIREWOOD — Seasoned, split hardwood. \$40 face cord, delivered. Dave, 475-7494. x311f

Antiques 4b

NEW ANTIQUE SHOP in Chelsea. Fire-side Antiques, 1196 S. Main (across from Village Motor Sales). Come visit. Nice variety of merchandise — brass, wood, furniture, primitives, glass and china. Thursday and Friday, 12-5 p.m. Saturday, 105 p.m. Ph. 475-9390. x39-6

FURNITURE - GLASSWARE PRIMITIVES - GENERAL LINE

SCHAULES ANTIQUES
Dick and Bertie Schauls
"We Buy and Sell" Appraising
Hours: Daily 10 a.m. til ?
PHONE (313) 475-7362
14450 ISLAND LAKE RD. CHELSEA x46-12

Real Estate 5

FRISINGER
NEW LISTING — Custom built brick and frame ranch, 3 bedrooms, 2 1/2 baths, dining room, family room, fireplace, 2 1/2-car attached garage, 30'x50' pole barn, 10 acres. Chelsea schools. \$61,000.

NEW LISTING — 3 bedroom tri-level, 2 baths, dining room, family room, free standing fireplace, 2-car garage, nice garden area, blacktop road, 1/2 mile from Grass Lake, \$61,000.

\$59,900 — 3-bedroom raised ranch, 1 1/2 baths, dining area, family room, 2-car attached garage, 1/2 mile from Wolf Lake.

\$89,900 — Easy maintenance on this 5-bedroom home, 1 1/2 baths, family room, study, dining room, fireplace, first-floor laundry, well designed kitchen. Chelsea schools, access to Half Moon Lake.

\$75,000 — Immaculate 3-bedroom home, 2 baths, family room, fireplace, dining room, first-floor laundry, 1 1/2-car garage, located at Sugar Loaf Lake.

\$45,000 — Village of Chelsea, 3-bedroom older home, large kitchen, corner lot, easy walking distance to downtown.

Real Estate 5

FRISINGER
NEW LISTING — Custom built brick and frame ranch, 3 bedrooms, 2 1/2 baths, dining room, family room, fireplace, 2 1/2-car attached garage, 30'x50' pole barn, 10 acres. Chelsea schools. \$61,000.

NEW LISTING — 3 bedroom tri-level, 2 baths, dining room, family room, free standing fireplace, 2-car garage, nice garden area, blacktop road, 1/2 mile from Grass Lake, \$61,000.

\$59,900 — 3-bedroom raised ranch, 1 1/2 baths, dining area, family room, 2-car attached garage, 1/2 mile from Wolf Lake.

\$89,900 — Easy maintenance on this 5-bedroom home, 1 1/2 baths, family room, study, dining room, fireplace, first-floor laundry, well designed kitchen. Chelsea schools, access to Half Moon Lake.

\$75,000 — Immaculate 3-bedroom home, 2 baths, family room, fireplace, dining room, first-floor laundry, 1 1/2-car garage, located at Sugar Loaf Lake.

\$45,000 — Village of Chelsea, 3-bedroom older home, large kitchen, corner lot, easy walking distance to downtown.

FRISINGER REALTY CO.
Chelsea 475-8681
935 S. Main St.
Eves:
Norma Kern 475-8132
Jeanne Riemschneider 475-1469
Marilyn Chasteen 475-2934
Dal Queenan 475-1819
John Pierson 475-2064
351f

THORNTON
475-9193

THE COUNTRY SCENE — 4-bedroom home on 10 acres. 2 fireplaces. Family room. Dining room. Excellent condition. Easy access to I-94. \$104,000. Eves. — George Knickerbocker 475-2646 or 475-1478. Darla Bohlender 475-1478.

GET A FRESH START with this 3-bedroom home. First-floor laundry. Deck. Stream. Lonely setting with some trees. \$76,900. Eves. — Lang Ramsay 475-8133 or 475-8951 after 6 p.m. x35-2
George Knickerbocker 475-2646.

EASY TO ENJOY — Lovely waterfront home on Sugar Loaf Lake. First-floor laundry. Fireplace. Low heating costs. \$63,900. Eves. — George Knickerbocker 475-2646 or Roger Curtis 475-9386.

PARADISE FOUND! Beautiful 3-bedroom home featuring family room! 3 fireplaces! Lovely treed acre lot. \$119,900. Eves. — Darla Bohlender 475-1478 or Chuck Walters 475-2808.

DON'T DELAY, move right in this new maintenance free 3-bedroom home. First-floor laundry. Front porch overlooking lovely lot and pond. \$52,700. Eves. — Lang Ramsay 475-8133 or Roger Curtis 475-9386.

WATERLOO REALTY
355 Clear Lake
JOANN WARYWODA, BROKER
Phone 475-8674
Evenings and Sundays
Sue Lewa 1-517-522-5252 x351f

2-BEDROOM YEAR-ROUND lakefront home on Big Portage Lake (Jackson county). New natural gas furnace. Insulated. Large lot, nice sandy beach. Leased land. Only \$15,900!

BRAND NEW 3-BEDROOM RANCH home situated on a hill with scattered trees. Full basement, attached 2-car garage, circle drive. Four-inch casing well. On 1.3 acres. Only 20 min. from Chelsea, south of Grass Lake. \$52,900. Terms negotiable.

IDEAL FAMILY BUSINESS OPPORTUNITY — Picturesque red brick mansion is currently licensed as adult care home for 12. Excellent income. Spacious private living quarters for owner plus extra apartment for in-laws. On 10 acres across from wooded state land in Waterloo Recreation Area. 20 min from Chelsea. \$118,000.

4.4 ACRES with southern slope, in Waterloo Recreation Area. Grass Lake schools.

2.9 ACRES Blacktop road frontage. Close to golf course. Waterloo Recreation Area. Grass Lake schools. \$12,900.

2 ACRES Vacant land with well, electric and septic system installed. Edge of Munith, 15 miles from Chelsea, just off M-106. \$9,500. Land contract possible.

10 ACRES Good building site with southern slope facing marsh and active stream. Adjoins state land in Waterloo Recreation Area. Stockbridge schools. \$18,500. Land contract with \$4,500 down.

THORNTON, INC.
REALTOR
George Knickerbocker 475-2646
Darla Bohlender 475-1478
Helen Lancaster 475-1198
Lang Ramsay 475-8133
Mark McKeenan 475-8424
Warren McArthur 475-1625
Chuck Walters 475-2808
Barb Lewis 475-1570
351f

CASH FOR LAND CONTRACTS
Any type property anywhere
in Michigan. 24 Hours
Call Free 1-800-292-1550
Just Nat'l. Not Accepting C.O.

Visit Our **Wicks Model Home**
OPEN HOUSE
at
5201 Brooklyn Rd.
(M-50 S.E. of Jackson)
Tuesday through Saturday
1-6 p.m.
Sunday
2-5 p.m.
Calloway Const.
1-517-764-4400
or
1-517-563-2930 x491f

Pierson & Riemschneider
475-9101

MANCHESTER SCHOOLS — 3-bedroom home on 1.5 acres. Partial basement, gas forced air heat. Good starter home! \$34,900.

ERA HOME WARRANTY included in this 3-bedroom home located in the Chelsea Village. Family room, full basement, 2 1/2-car attached garage, close to an elementary school, gas heat. \$69,900.

Real Estate 5

FRISINGER
NEW LISTING — Custom built brick and frame ranch, 3 bedrooms, 2 1/2 baths, dining room, family room, fireplace, 2 1/2-car attached garage, 30'x50' pole barn, 10 acres. Chelsea schools. \$61,000.

NEW LISTING — 3 bedroom tri-level, 2 baths, dining room, family room, free standing fireplace, 2-car garage, nice garden area, blacktop road, 1/2 mile from Grass Lake, \$61,000.

\$59,900 — 3-bedroom raised ranch, 1 1/2 baths, dining area, family room, 2-car attached garage, 1/2 mile from Wolf Lake.

\$89,900 — Easy maintenance on this 5-bedroom home, 1 1/2 baths, family room, study, dining room, fireplace, first-floor laundry, well designed kitchen. Chelsea schools, access to Half Moon Lake.

\$75,000 — Immaculate 3-bedroom home, 2 baths, family room, fireplace, dining room, first-floor laundry, 1 1/2-car garage, located at Sugar Loaf Lake.

\$45,000 — Village of Chelsea, 3-bedroom older home, large kitchen, corner lot, easy walking distance to downtown.

Real Estate 5

FRISINGER REALTY CO.
Chelsea 475-8681
935 S. Main St.
Eves:
Norma Kern 475-8132
Jeanne Riemschneider 475-1469
Marilyn Chasteen 475-2934
Dal Queenan 475-1819
John Pierson 475-2064
351f

THORNTON
475-9193

THE COUNTRY SCENE — 4-bedroom home on 10 acres. 2 fireplaces. Family room. Dining room. Excellent condition. Easy access to I-94. \$104,000. Eves. — George Knickerbocker 475-2646 or 475-1478. Darla Bohlender 475-1478.

GET A FRESH START with this 3-bedroom home. First-floor laundry. Deck. Stream. Lonely setting with some trees. \$76,900. Eves. — Lang Ramsay 475-8133 or 475-8951 after 6 p.m. x35-2
George Knickerbocker 475-2646.

EASY TO ENJOY — Lovely waterfront home on Sugar Loaf Lake. First-floor laundry. Fireplace. Low heating costs. \$63,900. Eves. — George Knickerbocker 475-2646 or Roger Curtis 475-9386.

PARADISE FOUND! Beautiful 3-bedroom home featuring family room! 3 fireplaces! Lovely treed acre lot. \$119,900. Eves. — Darla Bohlender 475-1478 or Chuck Walters 475-2808.

DON'T DELAY, move right in this new maintenance free 3-bedroom home. First-floor laundry. Front porch overlooking lovely lot and pond. \$52,700. Eves. — Lang Ramsay 475-8133 or Roger Curtis 475-9386.

WATERLOO REALTY
355 Clear Lake
JOANN WARYWODA, BROKER
Phone 475-8674
Evenings and Sundays
Sue Lewa 1-517-522-5252 x351f

2-BEDROOM YEAR-ROUND lakefront home on Big Portage Lake (Jackson county). New natural gas furnace. Insulated. Large lot, nice sandy beach. Leased land. Only \$15,900!

BRAND NEW 3-BEDROOM RANCH home situated on a hill with scattered trees. Full basement, attached 2-car garage, circle drive. Four-inch casing well. On 1.3 acres. Only 20 min. from Chelsea, south of Grass Lake. \$52,900. Terms negotiable.

IDEAL FAMILY BUSINESS OPPORTUNITY — Picturesque red brick mansion is currently licensed as adult care home for 12. Excellent income. Spacious private living quarters for owner plus extra apartment for in-laws. On 10 acres across from wooded state land in Waterloo Recreation Area. 20 min from Chelsea. \$118,000.

4.4 ACRES with southern slope, in Waterloo Recreation Area. Grass Lake schools.

2.9 ACRES Blacktop road frontage. Close to golf course. Waterloo Recreation Area. Grass Lake schools. \$12,900.

2 ACRES Vacant land with well, electric and septic system installed. Edge of Munith, 15 miles from Chelsea, just off M-106. \$9,500. Land contract possible.

10 ACRES Good building site with southern slope facing marsh and active stream. Adjoins state land in Waterloo Recreation Area. Stockbridge schools. \$18,500. Land contract with \$4,500 down.

THORNTON, INC.
REALTOR
George Knickerbocker 475-2646
Darla Bohlender 475-1478
Helen Lancaster 475-1198
Lang Ramsay 475-8133
Mark McKeenan 475-8424
Warren McArthur 475-1625
Chuck Walters 475-2808
Barb Lewis 475-1570
351f

CASH FOR LAND CONTRACTS
Any type property anywhere
in Michigan. 24 Hours
Call Free 1-800-292-1550
Just Nat'l. Not Accepting C.O.

TEN ACRES, horse barn, 3 BR ranch, 2 baths, gas heat, Chelsea schools. Ginny Sturgill, Realty World of Greater Jackson. 517-782-8256, 517-764-4795. x38-6

CHELSEA — LANEWOOD — New 2-story colonial, 3 bedrooms, 2 1/2 baths. Living room, dining room, country kitchen, family room with fireplace, basement, 2-car attached garage, village water, natural gas heat. Energy efficient. \$84,500. Call Jan 475-9576. x37-3

OPEN HOUSE
Sunday, Feb. 10
from 2-5 p.m.
10641 Waters Rd off Fletcher Rd.

Charming old farm house, outstanding woodwork, lots of elbow room, 10 acres, in Freedom township, Chelsea schools. \$99,500. Land contract available.

REAL ESTATE ONE, Inc.
Maizie Gaines
Sales Associate
Phone 995-1616
x35

AREA HOMES FOR SALE

BRICK & CEDAR RANCH with over 3,000 sq. ft. 4 bedrooms, study, 1 1/2 baths, fireplace, formal dining room, Separate workshop building. Above-ground pool all on 5 acres. Chelsea schools. \$83,500. Call Tim Harrison at 994-0124, office 994-4500.

IMMACULATE RANCH in Chelsea — Location is convenient to all shopping and schools. 3 bedrooms, 2 baths and separate dining room. Recreation room in full finished basement, nice fenced yard with a pool, \$67,000. Call Ginny Smith at 973-7276, office 994-4500.

LOCH ALPINE — New custom built spacious home. 4 bedrooms, 3 baths, study. Family room, 2 fireplaces. Full-length deck, near recreation. Special financing available. \$124,500. Call Tim Harrison at 994-0124, office 994-4500.

CHELSEA ESTATE — Cut stone home on 10 rolling acres. 3 bedrooms. Possible 4th or study. 1 1/2 baths, fireplace, remodeled kitchen. Extra deep basement with wine cellar. Screened porch, out-building for storage. Orchard on property. 10 adjoining acres also available \$139,900. Call Tim Harrison at 994-0124, office 994-4500.

SPEER & ASSOCIATES
ERA Realtor
x36-2

Animals, Pets 6

WOODSTOCK KENNELS
18531 Bush Rd.
Ph. 475-1794
Inside and Outside Heated Runs
Separate Housing for Cats
Love Provided Free 301f

FREE — 2 young miler cats. Both de-clawed. One tiger, one white. To good home only. Ph. 517-851-8974, persistently. x341f

FREE TO GOOD HOME — Male neutered police and collie mixed dog. Good watchdog, likes children. Has license and shots. Ph. 475-8951 after 6 p.m. x35-2

3 FREE to loving home — Spayed female Weimaraner. 2 1/2 years old. Ph. 475-1944. x35

FREE PUPPIES — Part collie, 4 females and 3 males. Ph. 475-1918 anytime until 8:30 p.m. x35

FREE PUPPIES — Gold Retriever/mix. Ph. 475-7449 after 6 p.m. x36-2

Animals, Pets 6

WOODSTOCK KENNELS
18531 Bush Rd.
Ph. 475-1794
Inside and Outside Heated Runs
Separate Housing for Cats
Love Provided Free 301f

Animals, Pets 6

WOODSTOCK KENNELS
18531 Bush Rd.
Ph. 475-1794
Inside and Outside Heated Runs
Separate Housing for Cats
Love Provided Free 301f

Animals, Pets 6

WOODSTOCK KENNELS
18531 Bush Rd.
Ph. 475-1794
Inside and Outside Heated Runs
Separate Housing for Cats
Love Provided Free 301f

Animals, Pets 6

WOODSTOCK KENNELS
18531 Bush Rd.
Ph. 475-1794
Inside and Outside Heated Runs
Separate Housing for Cats
Love Provided Free 301f

Animals, Pets 6

FREE PUPPIES — Part Brittany, 6 weeks old, wormed. Ph. 475-8226. x36-2

CALICO CAT, about one year old. Free to a good home. Ph. 475-9805. x35

Lost and Found 7

LOST — 2 dogs. Black and tan male Coon Hound, 5 years old and Walker pup, female, 9 months old. On Sat., Oct. 6, near Four Mile Lake. Anyone knowing anything of the whereabouts of these dogs, please call collect 537-3526 after 3 p.m. REWARD. x201f

LOST — Black cat, male, small white spot on lower abdomen. Vicinity of Cavanaugh Lake and Ridge Rd., this summer any information please phone 475-9341. x201f

REWARD FOR INFORMATION of the whereabouts of a black male cat with a small white spot between his black legs. Last this fall. If he has found a new home, just let me know of his safety. Ph. 475-9341. x341f

Help Wanted 8

LOOKING for responsible adult to run pinball arcade. Inquire at Chelsea Lanes from 11 a.m. to 5 p.m. x81f

WANTED — Bartender (M/F). 40 hours per week, day or night. Apply at Chelsea Lanes, 11 a.m. to 5 p.m. Waitress (M/F), part-time to begin Aug. 26. No experience necessary. Part-time janitorial help and counter personnel. Apply at Chelsea Lanes in person, between 11 a.m. and 5 p.m. x81f

DAY HELP WANTED
7 a.m. to 5 p.m.
Apply in person

McDONALD'S
1535 S. Main
Chelsea x471f

WAITRESS WANTED, full or part-time. Apply in person to the manager Country Kitchen Restaurant, 8128 Main St., Dexter. x231f

Substitute Bus Drivers
Apply at bus garage, 8331 Main, Dexter, or call 426-4314 between 9 and 2:30.

Dexter Community Schools
x261f

SUBSTANTIAL EARNING, taking short phone messages at home. Ph. 1-(312) 742-6683 Ext. 2051. x311f

WAITER/SSONS, Bartenders, and cooks — experienced for day and night work. Call for appointment, 475-1922, Chelsea Woodshed. x35-3

RETIRED COUPLE for Caretakers in exchange for a pleasant 4-room apartment with stove and refrigerator furnished. Small salary and other benefits. Excellent working conditions. Send applications with references to Box JA-21, The Chelsea Standard. x331f

WAITRESS WANTED
Call Jim for appointment, 475-2020.

Schumm's Restaurant
35-2

ELECTRIC TECHNICIANS

LOOKING FOR TROUBLE

LITTLE WANT ADS! BIG PLUSES FOR BIG RESULTS!

Help Wanted 8 For Rent 11 Bus. Services 13 Bus. Services 13 Bus. Services 13 Bus. Opportunity 15 Card of Thanks 16

Help Wanted 8
TYPIST — Accurate and experienced, part-time, to work on new computer. Ph. 475-1371, The Chelsea Standard, for interview appointment. x34if
WOMEN — Want additional income without a 40-hour week? Become the boss in your own business. For information phone 475-1935. x36-2
EXPERIENCED CLEANING PERSON — 1 day a week; own transportation Ph. 475-2169, week-days after 5. x36-2

Work Wanted 8a
CARPENTRY WORK WANTED — Rough or finished, all home repairs. Porches, steps, drop ceilings, shelves, etc. Also dry wall, patching and painting. Linoleum laid. Quality work. Ph. 428-8606 and ask for Paul. x37-4

Baby Sitter 9
LICENSED BABYSITTER has openings for pre-schooler. Dexter-Chelsea Rd. Ph. 426-4965. x35
LICENSED BABY SITTER — has full- and part-time openings, walking distance to South school. Ph. 475-7630. 14if
WILL BABYSIT in my home, Monday through Friday, day or night. Children any age. Ph. 475-1828. x38-8
MOTHER DESPERATELY in need of babysitter for 2 sweet little girls, 8 and 4 years. Must be dependable. In your home or mine. Please call 475-1602. 36-2

Wanted to Rent 9a
HOUSE TO SHARE — One female roommate wanted to share house in Chelsea. Ph. 475-3189, days. x35
LARGE HOUSE 1/2 mile from town, by July 1. Ph. 1-981-1750. 38-4
WANTED TO RENT — 2-bedroom apartment or house in village of Dexter. Please call 426-2505, and ask for Dan, between 7 a.m. and 3 p.m. x37-3

Wanted 10
LOOKING FOR a mature lady to share country home. References required. Ph. 475-1267 after 6 p.m. x35
OLD BARN WANTED — Will disassemble and remove to restore. Ph. 1-453-5315 ask for Bob. x36-2
TABLE SAW and joiner wanted. Ph. 475-1658. -35

For Rent 11
3 ROOMS, FURNISHED, in Dexter on Broad St. Ph. 426-4177. x35
TWO ROOMS FOR RENT and share a lakefront home with a scenic view, friendly atmosphere, hardwood floors, fireplace. \$145 per person, negotiable. Heat included. For two females or two males or couple. Ph. 475-7494. x34if
HOUSE FOR RENT — Working couple or single person. No children or pets. Ph. 475-8786. 35
APARTMENT — One small upstairs bedroom. Ph. 475-1658. -35
HOUSE FOR RENT — Patterson Lake. 2-bedroom, year-around. \$300 plus utilities. Ph. 663-9304 after 6 p.m. and week-ends. x36-2
FOR LEASE — Second floor new office space in Village of Dexter. Will partition to suit. Ph. 1-583-1356 or 1-852-8535. x42if
ROOMS by day, week or month. Excellent for the single man or retiree. Sylvan Hotel, Chelsea. Ph. 475-2911. x31if
OFFICE SPACE available in downtown Dexter. For information call 426-4695. x48if
FOR RENT — Fair Service Center for meetings, parties, wedding receptions, etc. Weekdays or week-ends. Contact John Wellnitz, phone 475-1518. x31if
AMERICAN LEGION HALL Rental — \$100-\$175. Ph. Lena Behnke, 475-9231, evenings and week-ends. 1if
CAR RENTAL by the day, week-end, week or month. Full insurance coverage, low rates. Call Lyle Chriswell at Palmer Motor Sales. 475-1301. 25if
FOR RENT — Country location, 2-bedroom ranch home. Good access to I-94. Rec room in full basement. Blacktop road. 15 minutes from Chelsea in Waterloo Rec. Area. \$370, per month. No pets. Security deposit. Ph. 475-8674. x15if
FOR RENT — Large three bedroom home. Natural gas heat, country kitchen, spacious living room. Knotty pine enclosed porch. Two car garage. Large shaded yard. \$425 per month. Security deposit. No pets. Central location in Village of Grass Lake. Immediate occupancy. Ph. 475-8674. x15if
CHOICE RENTAL on beautiful Crooked Lake YEAR-ROUND for married couple only. References required. Ph. 475-2018 or 475-8469. x16if
STORE FRONT BUILDING located on downtown Main St., Dexter. Prime location. Parking. 4,400 sq. ft. plus. Ph. 426-4695. x18if
NICE HOME in village of Chelsea. Close to shopping. No pets. Prefer quiet, non-drinking, non-smoking couple. Will consider small family. \$400 per month. Ph. 475-1674. 27if
NEW 2-BEDROOM apartments, appliances and drapes furnished, gas heat, central air conditioning. \$350 per month plus utilities and security deposit. Ph. days (517) 522-4437-522-5253 evenings after 6 p.m. x35-3
LAKEFRONT 3-BEDROOM house with fireplace, on chain of seven lakes. Nine miles north of Chelsea. Many extras. Ph. 485-2869. x33if
2-BEDROOM apartment in Stock-bridge. \$220 per month, plus utilities. Ph. 475-7349 after 4 p.m. x35-3
2-BEDROOM APARTMENT with kitchen, bath, living room. Second floor. 1/2 block from downtown Chelsea. Married couple. No children. Ph. 475-1502. -x35-2

For Rent 11
SECOND-FLOOR APARTMENT — Suitable for married couple only. References required. Heat furnished. Ph. 475-2018. x34if
3-BEDROOM HOUSE — 12 miles NW of Chelsea. Ph. 313-428-7573. x35-2
3-ROOM APARTMENT — Ph. 475-2062 36-2
LARGE HOMES for rent — 4 bedrooms up, between downtown and South school. Children welcome, no pets. 1 year lease. \$395. Security deposit required. Call 475-7151 or 475-7095. 38-4
ROOM FOR RENT with house privileges in farmhouse on lake between Chelsea and Dexter. Utilities paid. Ph. 475-8418 evenings after 4. x36-2
APARTMENT IN DUPLEX — 2 bedrooms, full basement, 6 miles north of Chelsea. Married couple. No children or pets. \$275. Ph. 426-3737. x35if
COUNTRY HOME to share: Single person or couple. Includes use of 25 acres, barns and equipment on a share basis. Orchard, garden and woodlot. Write Box FE-1, The Chelsea Standard, Chelsea. -x38-4
FOR RENT — 65 tillable acres. Call after 6 p.m. 1-231-1915 x35

CENTRAL RENTAL 665-9361
IN THE COUNTRY — Sunny 7 rooms, utilities paid, carpeted, complete kitchen, kids and pets ok. Only \$300. 665-9361. (30-38)
FRESH AIR — Warm 3 bedrooms, utilities paid, carpeted, dining room, complete kitchen, yard, kids ok. Just \$285. 665-9361. (30-37)
ACREAGE — Spacious 6 rooms. Plushly carpeted, refrigerator/stove, yard. Kids and pets ok. Only \$275. 665-9361. (30-36)
COUNTRYISH — Large 2 bedrooms, carpeted, basement, complete kitchen, garage, yard, near transportation. Just \$250. 665-9361. (30-35)
DESIRED AREA — Modern 5 rooms. All utilities paid. Complete kitchen. Near schools. Only \$210. 665-9361. (30-34)
ACREAGE — Sunny 5 rooms. All utilities paid, carpeted, basement, complete kitchen. Kids and pets ok. Only \$250. 665-9361. (30-33)
DESIRED AREA — Spacious 2-bedroom home. Covered floors, modern kitchen, kids ok. Only \$230. 665-9361. (30-32)
FRESH AIR — Large 6-room house. Carpeted, fenced yard, option to buy. Kids and pets ok. Only \$295. 665-9361. (30-31)
COUNTRY ATMOSPHERE — Rustic 7-room house, carpeted, fireplace, garage, option to buy. Kids and pets ok. Only \$300. 665-9361. (30-30)
WANT TO MOVE BY MARCH? We can help. Over 500 places. All areas, sizes, prices. Central, open 9 to 9, 665-9361. x35

Misc. Notice 12
PICK-UP a free copy of Bible references to comfort. Ph. 426-4982, M. Smith. -x25if

JOB OPPORTUNITY
 Applications for the Electrical Apprenticeship are available at the Vocational Education Office, Room 111, Eberwhite School, 800 Soule Blvd., Ann Arbor, Mich. from 10:00 a.m. to noon and 1:00 p.m. to 4:00 p.m. on weekdays.
 Applicants must be 18 years of age, have completed high school and have one year of high school algebra or the equivalent.
 Completed applications must be returned to the Vocational Education Office no later than February 29, 1980. An Equal Opportunity Apprenticeship Program. x36-4
RUNNING OUT OF ROOM? Store your "extras" in my secure heated, all-steel building. Pay just for the space you use. Ph. 475-8892. 35if

Bus. Services 13
PAINTING
 INTERIORS
 Special Winter Rates
 Large or Small Jobs
PHONE 475-8324
 x 3 7 - 3
Chelsea Building Maintenance Co.
 7215 Jackson Rd.
 Ann Arbor
Ph. 668-0585
PLUMBING CONTRACTORS
 INDUSTRIAL - COMMERCIAL RESIDENTIAL
 NEW & REPAIR WORK
 A. O. Smith Water Heaters
 Bruner Water Conditioning Dealer
 Beginning Feb. 1
 Serving the Chelsea, Dexter and surrounding areas.
Bill Colvin
 and
Henri vanderWaard
 x33if
SNOWPLOWING
PHIL McDANIELS
Ph. 475-2430
 26if

Bus. Services 13
LAWN MAINTENANCE SNOW PLOWING SMALL LANDSCAPING
RICHARD SMITH
475-8984 after 5 p.m.
 10if
CEMENT WORK
 PATIOS - DRIVEWAYS - PORCHES SIDEWALKS - WOOD DECKS
 Experiences — Free Estimate
PHONE 428-7270
 x15if

Bus. Services 13
RON MONTANGE CONSTRUCTION (RJM, INC.)
 —Full carpentry services (rough and finish)
 —Additions, remodeling and repairs
 —Concrete
 —Roofing and siding
 —Cabinets and Formica work
 —Metal farm buildings
 Grain storage bins
 —Excavating and trenching
QUALITY WORKMANSHIP FREE ESTIMATES
Ph. 426-2585 or 475-1080
 19if

Bus. Services 13
LEONARD REITH
Master Plumber
Licensed Electrician
Hat Water Heat
18238 N. Territorial Rd.
Chelsea, Mich. 48118
Phone: 475-2044
 52if

Bus. Services 13
McCulloch
Portable Generators
Chain Saws
 WE SELL, SERVICE SHARPEN AND TRADE
Chelsea Hardware
 21if
Janitorial Service
 Daily, Weekly, Monthly WE DO IT ALL
SPECIAL on carpeting, furniture and drywall cleaning. Also painting and drywall.
WRITTEN GUARANTEE FREE DEMONSTRATION
 Call About Our FREE STEAK DINNER
973-1499
 x47if

Bus. Services 13
SNOW PLOWING DUANE DORR
 RESIDENTIAL OR COMMERCIAL
Phone 475-8365
 -38
BUILDING A NEW HOME?
 Call me for a free estimate on your poured foundation.
Mel Jones 475-1707
 x34if
 SAND GRAVEL
KLINK EXCAVATING
 Bulldozer — Backhoe Road Work — Basements Trucking — Crane Work Top Soil — Demolition Drainfield — Septic Tank Trenching, 5" up Industrial, Residential, Commercial
CALL 475-7631
 13if

Bus. Services 13
PAINTING
 INTERIORS
 Special Winter Rates
 Large or Small Jobs
PHONE 475-8324
 x 3 7 - 3
Chelsea Building Maintenance Co.
 7215 Jackson Rd.
 Ann Arbor
Ph. 668-0585
PLUMBING CONTRACTORS
 INDUSTRIAL - COMMERCIAL RESIDENTIAL
 NEW & REPAIR WORK
 A. O. Smith Water Heaters
 Bruner Water Conditioning Dealer
 Beginning Feb. 1
 Serving the Chelsea, Dexter and surrounding areas.
Bill Colvin
 and
Henri vanderWaard
 x33if
SNOWPLOWING
PHIL McDANIELS
Ph. 475-2430
 26if

Bus. Services 13
SNOW PLOWING DUANE DORR
 RESIDENTIAL OR COMMERCIAL
Phone 475-8365
 -38
BUILDING A NEW HOME?
 Call me for a free estimate on your poured foundation.
Mel Jones 475-1707
 x34if
 SAND GRAVEL
KLINK EXCAVATING
 Bulldozer — Backhoe Road Work — Basements Trucking — Crane Work Top Soil — Demolition Drainfield — Septic Tank Trenching, 5" up Industrial, Residential, Commercial
CALL 475-7631
 13if

Bus. Services 13
Custom Built Homes
Oh! We Remodel too
U—can count on us
N—a Job Too Small
T—rim Inside and Out
R—ough-in Only if
Y—ou Want to Finish
S—iding Aluminum, 5" Gutters
I—mmediate Attention
D—ALE COOK & CO.
E—stimates, Free
BUILDERS
 Please call
475-9153 DALE COOK
 17if

Bus. Services 13
STEP UP TO KOZMA CONSTRUCTION And Step Down In Price
 LICENSED BUILDER
 FREE ESTIMATES
 COMPLETE CONSTRUCTION SERVICES
CALL LEN KOZMA 475-7452
 29if

Bus. Services 13
LITTLE WACK EXCAVATING
 Basement — Drainfields
 Bulldozing — Digging
 Snow Removal — Tree Removal
 LICENSED AND INSURED
Paul Wackenhut
 Ph. 428-8025 52if

Bus. Services 13
R. L. BAUER Builders
 LICENSED AND INSURED
 Custom Building
 Houses — Garages
 Pole Barns
 Roofing — Siding
 Concrete Work
 FREE ESTIMATES
Call 475-1218
 3if

Bus. Services 13
Why hire THREE contractors when ONE will do? HILLTOP, INC.
 PLUMBING HEATING ELECTRICAL
WE DO IT ALL!
 Serving Washtenaw County for the 25th year.
 475-2949
 8316 Werkner - Chelsea x38if

Bus. Services 13
When Winter Winds Blow Be Protected By A New Layer of Fiberglass Insulation
 NOW ON SALE
 3 1/2" unfaced — 15c sq. ft. \$20.16 a bag
 6 1/2" unfaced — 18c sq. ft. \$32.36 a bag
 8 1/2" kraft faced — 34c sq. ft. \$38.10 a bag
 Prices Include Tax
CALL 475-7643
 Winter's A-Coming! 8if

Bus. Services 13
J. R. CARRUTHERS
 LICENSED RESIDENTIAL BUILDER
 CUSTOM HOMES
 ADDITIONS/FIREPLACES
 PATIOS
 ROOFING/SIDING/REPAIRS
475-7234 CHELSEA
 30if

Bus. Services 13
INCOME TAX PREPARATION SERVICE. Reasonable rates. Ph. 426-2395. x36-2
TEACHER IS providing supportive motivational environment for all ages. Afternoons. Ph. 426-2096. x35
REMODELING UNLIMITED — All types of remodeling, renovation, additions, repairs and electrical work. Ph. (313)498-3276. x52if

Bus. Services 13
ATTIC INSULATION
Class 1 Cellulose Insulation installed by trained installers
FOAM WALL INSULATION
 Higher thermal efficiency of any insulation type.
 New and Existing Construction.
FOAM MASTERS
 Complete insulation contractor
 Licensed and Insured.
475-1625
 Free Estimates x31if

Bus. Services 13
HANDYMAN DAN
 Home Repairs
(517) 851-8888
 15if
Your Wedding deserves the very best in Wedding Flowers
 We specialize in a complete line of wedding flowers and wedding accessories to fit your budget. Come in or call us for an appointment.
Chelsea Greenhouse
 7010 Lingane Rd., Chelsea
 475-1353 or 475-1354 x39if

Bus. Services 13
JIM W. FRENCH
Small Dump Trucking
 SAND - GRAVEL - STONE
Ph. Chelsea 475-1173
 21if
CORRECTIVE HORSESHOEING and Trimming. Mike Brisbois. Ph. 565-3036. x45if

Bus. Services 13
Chelsea Plumbing & Heating
 QUALITY WORKMANSHIP
 REASONABLE RATES
 Specializing in
 —New Construction
 —Remodeling
 —Hydrolic Heat
 GAIL SHEARS
 Licensed Journeyman
 GARLAND DE YOY
 Licensed Master
Ph. 475-1037
 17if

Bus. Services 13
WILL DO CARPENTRY WORK — Remodeling, acoustical ceilings, drywall. Free estimates. Ph. 475-8226. 42-10
UPHOLSTERING & DRAPERIES for homes, motor homes and trailers. Your material. Assistance if needed in selecting color, style and yardage needed. Free estimates. Ph. 428-8606. 36-4

Bus. Services 13
Window Screens Repaired
 Reasonable rates
Chelsea Hardware
 110 S. Main Ph. 475-1121 30if

Bus. Services 13
Floor Covering Is Our Business
 TILE—SOLARIAN—HARDWOOD CARPET—INSTALLATION—REPAIRS
 FREE ESTIMATES — 475-8621
Merkel
Home Furnishings
 4if

Bus. Opportunity 15
Financial 14
PRIVATE PARTY. Purchasers land contracts and mortgages. Eves. only 475-1469. x21if
LAND CONTRACTS PURCHASED — Any size, any property type. Courteous and reliable service. Call Dan Duncan, Ann Arbor Real Estate Co., 668-8595. 33if
COUPLES trying to beat inflation! Start a business of your own. Set your own hours. For information phone 475-1935. 30-2

Bus. Opportunity 15
CHELSEA BUS. OPPORTUNITY FILE
BLUE JEAN STORE
 OWN YOUR OWN highly profitable and beautiful blue jean store and fashion shop. Classic Casuals offers this unique opportunity. Brand names such as Lee, Levi, Wrangler, Faded Glory, Male, Landlubber and over 30 other nationally known brands.
 \$20,000 including beginning inventory, fixtures, training, and Grand Opening promotion.
 For information Call: Mr. Ellis (916) 542-1236 -35

Bus. Opportunity 15
HAVE A HIGHLY PROFITABLE and beautiful Jean Shop of your own. Featuring the latest in Jeans, Denims, and Sportswear. \$16,500.00 includes beginning inventory, fixtures and training. You may have your store open in as little as 15 days. Call any time for Mr. Colombo (313) 632-7018. -35
ATTENTION: Shackley and Amway people and those interested in sales! Better bonuses, ground-floor opportunity in Enhance, a new sale corporation. For more information, call 668-6525, 10:30 a.m.-2:20 p.m. x35

Bus. Opportunity 15
JV Basketball
 Feb. 8—Dexter A
 Feb. 12—C. Airport A
 Feb. 15—Saline H
 Feb. 19—J. Northwest H
 Feb. 22—Lincoln A
 Feb. 26—Willow Run H
 Feb. 29—Mason A
 Home games begin at 6:30 p.m.

Card of Thanks 16
CARD OF THANKS
 I would like to thank all my relatives, friends and neighbors for the many cards and flowers and visits during my recent stay and surgery at St. Joseph Mercy Hospital, Ann Arbor, and since my return home. I would like to also to thank the nurses and doctors and special thanks to Dr. Wolin for my recovery. I really appreciate everything that has been done for me. God bless you all.
 Mrs. Rex (Maggie) Guinan.

In Memoriam 17
IN MEMORIAM
 In memory of our brother David E. Aldrich, who passed away two years ago, Feb. 9, 1978. For those who have a brother, cherish him with care, for you shall never miss him until he isn't there. Sadly missed by sisters, Karen, Carol and Pat, and families.

In Memoriam
 In memory of my son, David E. Aldrich, who passed away suddenly two years ago, Feb. 9, 1978, just five days before his birthday. To those who have a son, love him while you may, for I wish with all my heart that he was here today. Though tears in my eyes do not always glisten and my face is not always sad, there is never a night or a morning, but I think of the son I had.
 Sadly missed by Mom.

SPECIALS
 16-OZ. BOTTLES
Coca-Cola 8 pac \$1.49
 (plus deposit)
 1-LB. BOX
Ritz Crackers 83c
 2-LB. CAN BANQUET FROZEN
Fried Chicken . . \$1.89
 1-LB. PKG. ECKRICH
Sliced Bologna \$1.49
 6 1/2-OZ. CAN CHICKEN OF THE SEA
Tuna Fish 89c
KUSTERER'S FOOD MARKET
 DIAL 475-2721 WE DELIVER

What's worse than having your \$45,000 house burn to the ground? Having an insurance policy that only pays \$25,000.
 Every year, inflation and rising property values increase the value of your home. And make it that much more expensive to replace should something happen to make it a total loss.
 But if you have an Auto-Owners homeowners policy with Adjusted Value Endorsement, you're protected. Because this modern Auto-Owners policy is designed to keep pace with rising values automatically.
 If you aren't covered by Auto-Owners . . . well, maybe you should be replacing your present insurance. Let us fill you in. Before you have to replace your home.

YOUR Independent Insurance AGENT SERVES YOU FIRST

Auto-Owners Insurance
 You can't find a better name for homeowners insurance

MAYER AGENCY
 of Springer-Kleinschmidt Agency, Inc.
 Phone 475-8689 Chelsea, Michigan

Community Calendar

1980	February	1980
S	M	T
3	4	5
6	7	8
9	10	11
12	13	14
15	16	17
18	19	20
21	22	23
24	25	26
27	28	29
30	31	

Senior Citizens meet third Friday of every month, pot-luck dinner, games and cards. 6 p.m. at Senior Citizen Activities Center on W. Middle St.

Home Meals Service, Chelsea. Meals served daily to elderly or disabled. Cost per meal, \$1.50 for those able to pay. Interested parties, call Barbara Branch, 475-7644 or Ann Feeney, 475-1493.

Recreation Council meets first Wednesday of each month at 7:30 p.m. in the village council room above the police offices. Open to the public.

Knights of Columbus Women's Auxiliary, second Thursday of each month, 8 p.m. at K. of C. Hall, 20750 Old US-12.

Lyndon Township Board regular meetings the third Tuesday of each month, 7 p.m., in Lyndon Town Hall. adv42tf

Lima Township Planning Commission, first Tuesday of each month, 8 p.m., Lima Township Hall. advx2tf

Meetings of the Lyndon Township Planning Commission are held at 8 p.m. the second Thursday of every month at Lyndon Town Hall.

American Legion hospital equipment is available by contacting Larry Gaken at 475-7891.

Sharon Township Board regular meeting, first Thursday of each month, 8:30 p.m. adv42tf

The Church of Jesus Christ of Latter Day Saints (Mormons) meets every Sunday at the Rebekah Lodge. Public welcome.

North school Parent Group, first Thursday of each month, 8 to 9:30 p.m., North school Media Center.

Chelsea Village Council meets the first and third Tuesdays of each month.

Inverness Country Club pot-luck and euchre party, 6:30 p.m., first Tuesday of each month.

Chelsea Band and Orchestra Boosters, second Thursday of each month, 7:30 p.m., high school band room.

Lima Township Board regular meeting first Monday of each month, 8 p.m., Lima Township Hall.

L.D./E.I. Parent Group meets every second Wednesday of the month, 7:30 p.m., Room 210 at Chelsea High school.

Lions Club, first and third Tuesday of every month, 6:45 p.m., at Chelsea Community Hospital.

Olive Chapter No. 140, RAM, regular convocations, Thursday, Feb. 7, 7:30 p.m.

Chelsea Community Hospital Nutrition Program pre-natal nutrition classes, fourth Tuesday of each month, 6 to 7 p.m. at the hospital. To register, phone 475-1311 (ext. 354). Class is free of charge.

Chelsea Athletic Boosters meet fourth Wednesday of each month in the Chelsea High school cafeteria. 1980 dates: Feb. 27, March 26, April 23, May 28.

Sylvan Township Board regular meetings, first Tuesday of each month, 7 p.m., Sylvan Township Hall, 112 W. Middle St.

Tours of Chelsea Community Hospital and surgical center are available for small groups. To arrange, for tours, call: Ruby Strieter, 475-2065; Shirley Schable, 475-7625; or Jan Wessinger, 475-1311.

Lamaze childbirth preparation classes are offered continually at Chelsea Community Hospital. To register, call 475-9558 or 475-7484.

Boy Scout Troop 476 wants newspapers. Ph. 475-2850 or 475-7547 for pick-up schedule. -38-8

Chelsea Band and Orchestra Boosters February meeting date moved to Feb. 21 because of Patriots' Week-end. Election of officers will take place.

Chelsea Jaycee Auxiliary Winter Rummage Sale, Saturday, Feb. 9, 9 to 4 p.m. at Longworth Plating Building. adv35

Rogers Corners Farm Bureau, Friday, Feb. 15, 8:30 p.m. at home of Luther and Barbara Schable, 4665 Fletcher Rd., Manchester.

Cub Scout Pack 435 Blue and Gold Banquet, Sunday, Feb. 10, 1:30 p.m. at North school cafeteria.

Dialogue with the Superintendent, Thursday, Feb. 7, 9:30 a.m. in the board room of the school district administration building.

Homemakers Club, Thursday, Feb. 28, 8 p.m. at Lima Township Hall. Guests welcome, RSVP to Barb Wolfgang, 475-7941, Liz Houle, 475-8058, or Barb Seabury before Feb. 18. Speaker, Manchester Police Chief William Zsenyuk.

LD/EI Parent Group meets Wednesday, Feb. 13, 7:30 p.m. in lobby of St. Louis school for tour of the school.

Chelsea Community Farm Bureau, Thursday, Feb. 14, 7:15 p.m. pot-luck at the home of Carl and Ella Heller.

Chelsea Historical Society pot-luck, Monday, Feb. 11, 6:30 p.m. at the Congregational church.

DEATHS

Guy Stivers
Lima Township Resident Dies at Area Nursing Home
Guy Stivers, 11 S. Fletcher Rd., died Monday, Feb. 4 at the Stockbridge Convalescent Home. He was 85.

Mr. Stivers was born Dec. 27, 1894, the son of Asbury and Maude (Wollemes) Stivers. He served in the U.S. Navy in World War I and was a member of the Carpenters Local 512 of Ann Arbor.

He lived most of his life in the Ann Arbor area and on Feb. 21, 1916 married Nina Eschelbach. She died in 1951.

Survivors include two sons, King Stivers of Florida and Guy P. Stivers of Chelsea; and four grandchildren.

Funeral services will be held Thursday, Feb. 7, 1 p.m. at the Staffan Funeral Home, with the Rev. John Morris officiating. Burial will follow in Forest Hills Cemetery, Ann Arbor.

Robert Barry
Former Chelsea Resident Dies at Home Near Jackson
Robert Barry, 6220 Brooklyn Rd., Jackson, a former Chelsea resident, died suddenly at his home Tuesday, Jan. 29. He was 52.

Mr. Barry was born Dec. 18, 1927 in Chelsea, the son of Wayne and Estelle (Eldridge) Barry. He was an employee of the Chelsea Grinding Co. at the time of his death.

Surviving are three sisters, Mrs. Ann Johnson of Hot Springs, Ark., Mrs. Helen Bowen of Carlton, Minn., and Mrs. Dorothy Kolander of Carson City, Calif.

Funeral services were held Saturday, Feb. 2 at 3 p.m. at the Staffan Funeral Home with the Rev. Joseph Polmounter officiating. Burial followed in Oak Grove Cemetery.

Two Teachers Attend Reading Conference

Two North school teachers, Marie Crouch and Sally Schlupe, attended a conference the week-end of Feb. 2, dealing with the Orton Gillingham approach to teaching reading. The two-day conference covered extensively this phonic-oriented approach to teaching spelling, writing and reading.

The conference was not funded by the district, but both women felt that it was well worth the time and money spent. Both came back with many ideas and materials, as well as an alternative approach to implement with children having reading, spelling and writing difficulties.

This conference was held in the Washtenaw Intermediate School District building. WISD provides county teachers with an excellent source of developmental materials and workshops.

FLAMES KILL 1,152
One of the worst fires in the history of the United States occurred Oct. 8, 1871, in Peshtigo, Wis., and environs, killing 1,152 persons, the Insurance Information Institute reports.

Freshman Basketball
Feb. 7—J.C. Western H
Feb. 11—Tecumseh H
Feb. 14—Milan A
Feb. 18—Dexter H
Feb. 21—Saline A

Tonight and Every Thursday
THE CAPTAINS TABLE
ROAST BEEF BUFFET

VISA
Master Charge

NOW SERVING COCKTAILS IN OUR NEW BAR

"Carved Before Your Eyes"
Serving from 4:30-9:30 p.m.

The Captains Table - 8093 Main St., Dexter
Thursday, Friday, Saturday open till 7

Chelsea Day In Florida Set for Feb. 24

Chelseaites should mark their calendars for the annual Chelsea Day in the south, to be held Sunday, Feb. 24, 12:30 p.m. in Tarpon Springs, Fla.

A pot-luck dinner will begin at 12:30 p.m. at the Clubhouse in Baywood Village in Tarpon Springs.

Travelers using US Hwy. 19 from the north, should pass Tarpon Mall (Tarpon Springs) to the first red light, Klosterman Rd. From there, turn right, cross Alt. 19 and follow maize and blue "Chelsea Day" signs.

Travelers from the south using Hwy. 19, should turn left at the first red light after CR 584 and follow the above instructions. If traveling from either direction on Alt. 19, watch for signs on Klosterman Rd. and head west. If you reach the Gulf, you have traveled 1 1/2 blocks too far.

This year the event will again be hosted by Gerry and Bill Blaess. They may be reached at (813) 934-6879.

Tri-County Sportsmen's Club Annual Game Dinner, Sunday, Feb. 17, 12-3, 8640 Moon Rd., Saline. Variety of game meats plus ham. For reservations call clubhouse, 429-9561. No ticket sales at door. x35

Herbert J. McKune American Legion Post No. 31 regular meeting, Thursday, Feb. 7, 8 p.m. Executive Board meeting at 7:30.

Ann Arbor Eagles sauerkraut supper (instead of fish fry), Friday, Feb. 29, beginning at 6 p.m. \$5 per plate; \$3.50 to children eight and under. advx38-4

Chelsea Woman's Club regular meeting Tuesday, Feb. 12 at Beach school. Valentine Tea Thursday, Feb. 14, at Chelsea United Methodist Retirement Home. Bring two dozen cookies, to go to Jo Spade.

Births

A daughter, Laura Marie, to Robert and Linda Preston, 1208 Astor Dr., Ann Arbor, on Jan. 27 at St. Joseph Mercy Hospital. Paternal grandparents are Robert and Barbara Preston, Dexter. Maternal grandparents are Mr. and Mrs. George Poland, Ann Arbor.

A daughter, Laura Ann, Tuesday, Jan. 22 to Mr. and Mrs. Loren Heller, 2916 S. M-52, Chelsea. Maternal grandparents are Mr. and Mrs. Ellis Pratt, Manchester. Mr. and Mrs. Carl Heller of Chelsea are paternal grandparents.

SCHOOL LUNCH MENU

Week of Feb. 11-15
Monday—Ham dingers on buns with trimmings, cole slaw, potato sticks, dish peaches, milk.
Tuesday—Submarine boat, tomato soup and crackers, celery strip, ginger bread with topping, milk.
Wednesday—Turkey casserole, buttered corn, biscuit and butter, fruit, milk.
Thursday—Pizza slice, buttered green beans, p-nut butter sandwich, valentines cake, ice cream, milk.
Friday—Patriot's Day Week-end starts. No school.

Please Notify Us of Any Change in Address

Amana FACTORY REBATE SALE

ANOTHER AMANA FIRST...EXCLUSIVE

Amana Radarange
MICROWAVE OVEN

ROTAWAVE
COOKING SYSTEM

\$50 REBATE

Offer applies only to Models RR-9 TA, \$40 Rebate, or RR-10A, \$50 Rebate sold and delivered between Jan. 1, 1980 and Feb. 29, 1980.

A rotating shower of power that cooks more evenly and cooks most foods faster than ever before!
The Rotawave antenna beams microwave energy directly at food in a uniform, rotating pattern.

Come in to see a demonstration.
Rotawave is available on 700-watt Amana Radarange Microwave Ovens RR-10A, RR-9TA, RR-8A, RR-7A and RR-7DA. It's the best thing that's happened to cooking since microwaves!
And it's only from Amana!

COME IN AND SEE . . .

Amana TOUCHMATIC II™ **ROTAWAVE**
Radarange MICROWAVE OVEN™ **COOKING SYSTEM**

HEYDLAUFF'S

113 N. Main St., Chelsea Ph. 475-1221

Wheel Horse
SAVE \$380.
WHEN YOU BUY A NEW WHEEL HORSE.

Was: \$2145
Now: \$1765
SAVE \$380.00

Model C-85 with 36" mower.
Savings based on mower at \$350.00
(Manufacturer's Suggested List Price)

WHEEL HORSE lawn & garden tractors

GAMBLES
110 N. Main, Chelsea Ph. 475-7472
Open 8:30 to 5:30 Daily. T/Th 8:30 Fri.
Offer good only at participating dealers through March 23rd 1980

Be an instant winner!
Play new

Polly's
MASTERMARKETS

201 PARK AVE., V.C.L.,
1821 SPRING ARBOR RD.,
960 N. WEST AVE.,
3102 EAST MICHIGAN,
and 1101 M-52, CHELSEA

5 CONVENIENT LOCATIONS
TO SERVE YOU BETTER!

SUPER 7 JACKPOT

1. Now, one more great reason to shop Polly's

There's a new game in town! It's super easy to play — there's nothing to save, and lots of chances to win! We call it Super 7 Jackpot. But don't look for it everywhere — it's only being offered at (store name) stores, like the one in your neighborhood. And it's just one more reason for you to come in and discover all the special buys, special services and special offers waiting for you, just down the street — at (store name).

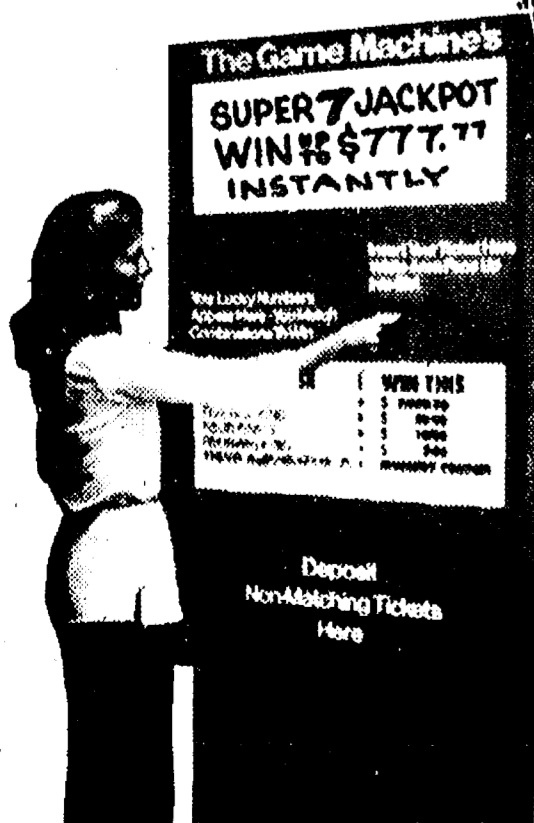
Feelin' lucky? Come on in! You could be an instant winner in our new Super 7 Jackpot game!

It's the simplest game you've ever played!

2. You'll get a Jackpot ticket just like this one every time you visit Polly's



3. Before you leave, get your ticket stamped with numbers by inserting it in our big game machine.



Insert Your Ticket Here
White Area Face Up
Numbers You Match To Win

Simply present your winning ticket to the store manager. Prizes of \$77.77 or more will be paid by check after official verification. Taxes on prizes are the responsibility of the prize winner.

Ticket is void if tampered with in any way. Double stamped, disfigured or mutilated numbers are invalid. Rights reserved to reject any ticket not obtained through legitimate channel or because of computer malfunction. Employees of our company, their immediate families and/or households (including I.R.S. dependents), and our advertising agencies are not eligible to participate. Limit one ticket for each store visit, please. Players must be 18 or older.

4. You're an Instant winner if you get 3, 4 or 5 Sevens, 3, 4 or 5 of the Same Number.

IF THIS COMBINATION APPEARS ON YOUR JACKPOT TICKET	YOU WIN INSTANTLY
77777 FIVE SEVENS	\$777.77
33333 FIVE of SAME KIND	\$77.77
77777 ANY FOUR SEVENS	\$7.77
77777 ANY FOUR of SAME KIND	\$1.77
37777 ANY THREE SEVENS	77¢
73777 ANY THREE of SAME KIND	3 EXTRA TICKETS

5. The amount you win depends on the combination you get.

Odds are . . . you'll love to play!

WIN!
up to
INSTANTLY!

COMPUTER MATCH	PRIZE VALUE	TOTAL PRIZES	ODDS 1 TICKET
Five Sevens	\$ 777.77	91	1:100,000
Five of Same Kind	\$ 77.77	819	1:11,111
Any Four Sevens	\$ 7.77	4,095	1:2,222
Any Four of Same Kind	\$ 1.77	36,842	1:247
Any Three Sevens	\$.77	73,387	1:124
Any Three of Same Kind	3 EXTRA TICKETS	758,333	1:12
TOTALS		873,547	1:10

NO PURCHASE NECESSARY. PRESENT WINNING TICKETS TO STORE MANAGER.

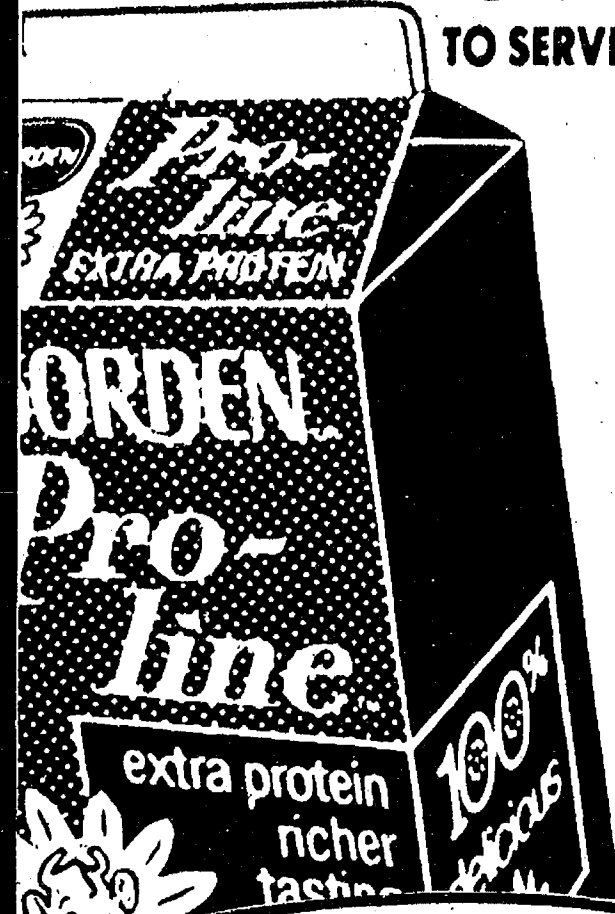
Polly's

MASTERMARKETS

5 CONVENIENT LOCATIONS
TO SERVE YOU BETTER!

201 PARK AVE., V.C.L.,
1821 SPRING ARBOR RD.,
960 N. WEST AVE.,
3102 EAST MICHIGAN,
and 1101 M-52, CHELSEA

Sale Prices Effective
Thru Saturday, 2-09-80



Borden 2% Lowfat
Pro-Line
MILK
69¢
Half-Gallon



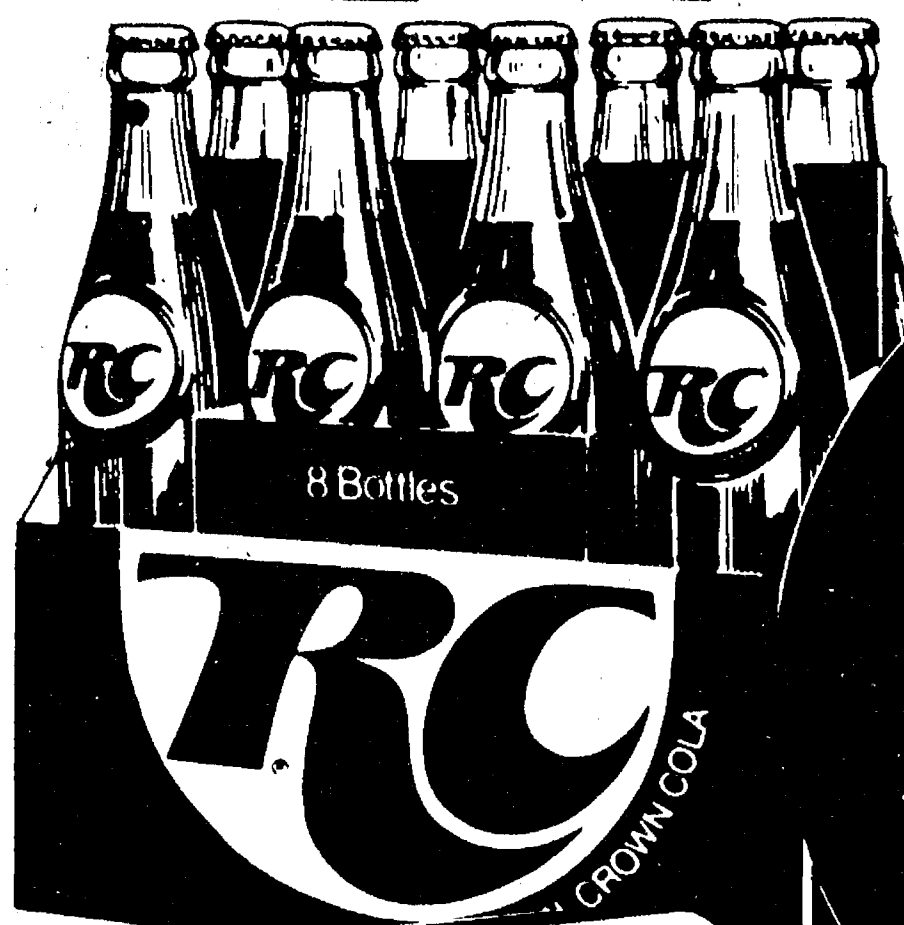
Borden 16-Oz.
COTTAGE CHEESE
69¢

Be an instant winner! Play new SUPER 7 JACKPOT

WIN UP TO

\$777

COMPUTER MATCH	PRIZE VALUE	TOTAL # TICKETS	ODDS 1 TICKET
Five Sevens	\$777.77	81	1 100,000
Four of a Kind	\$77.77	819	1 11,111
Three Sevens	\$7.77	4,095	1 2,322
Two Sevens	\$1.77	38,847	1 287
One Seven	\$0.77	73,347	1 124
Three of a Kind	\$0.77	73,347	1 124
Two of a Kind	\$0.77	73,347	1 124
One of a Kind	\$0.77	73,347	1 124
TOTALS	\$777.77	733,347	1 10



8-Pak/16 Ounce
R.C. COLA
or Diet-Rite Cola
\$1.29
Plus Deposit

- Folger's 26-Oz. **FLAKED COFFEE** \$4.99
- Dole Juice Packed 20-Oz. **PINEAPPLE** 59¢
- 15' off Label 35-Oz. **DISHWASHER ALL** \$1.09
- 20' off Label 32-Oz. **LIQUID ALL** \$1.19
- Dinty Moore 40-Oz. **BEEF STEW** \$1.79
- 3-Diamond Pieces & Stems 4Oz. **MUSHROOMS** 2 for 89¢
- 1 Free w/3 Regular Size **DIAL SOAP** 4 for 99¢
- 30' off Label County Line **COUNTRY CURED CHEDDAR** \$2.79 lb.
- Tropicana 10-Oz. **FRUIT DRINKS** 5 for \$1.00
- 10' off Label Schaffers 24-Oz. **SOFT n' GOOD BREAD** 79¢

Keekler Cookie Sale!

- 12-Oz. **VANILLA WAFERS**
- 12 1/2 Oz. vanilla or **FUDGE CREAMS**
- 12-Oz. Peanut Butter **DOUBLE NUTTY**
- 14-Oz. Chocolatey **ELF WICH**

69¢
your Choice!

- 10-Oz. **WONDRA SKIN LOTION** \$1.19
- 60-Ct. **EXCEDRIN** \$1.39
- 36-Ct. **ALKA-SELTZER PLUS** ... \$1.69
- 3-Oz. **VICK'S VAPORUB** \$1.79

In-store coupons



25' off Label 64-Oz.
DOWNY
Fabric Softener
\$1.59

- Folger's 10-Oz. **INSTANT COFFEE** \$4.49
- Durkee 4-Oz. Pure Ground **BLACK PEPPER** 79¢
- Thank You 21-Oz. **CHERRY PIE FILLING** \$1.09
- Hungry Jack 7-Oz. **PAN SHAKES** 2 for 89¢
- 49-Oz. Detergent **OXYDOL** \$1.59
- Aerosol Air Freshener 7-Oz. **GLADE** 59¢

- Nabisco 16-Oz. **RITZ CRACKERS** 89¢
- Creamette 16-Oz. **EGG NOODLES** 57¢
- Foulds 2-Lb. **THIN SPAGHETTI** 99¢
- Kraft 19 1/2 Oz. **SPAGHETTI W/MEAT SAUCE** 99¢
- White Cloud 4-Roll Pak **BATH TISSUE** 87¢
- For Colds 10-Oz. **VICKS NYQUIL** \$2.55

Kraft 1/2-Gallon
ORANGE JUICE
\$1.19

18' off Label/18-Oz.
SCOPE
Mouthwash
\$1.39

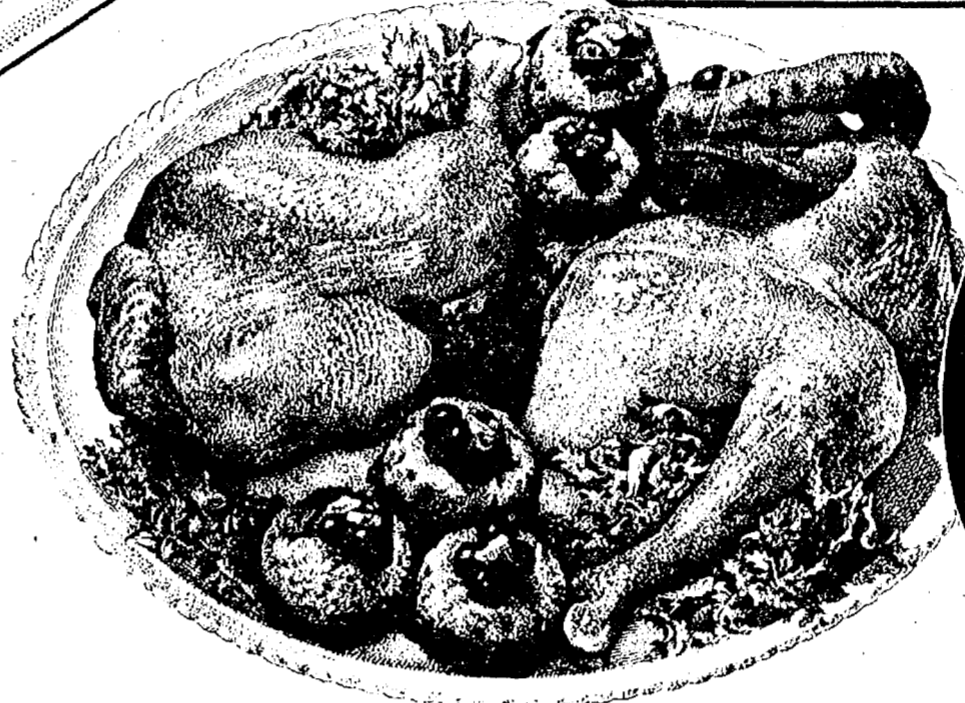


Farmer Peet's Whole
PORK LOIN
12/14-POUND
99¢ lb.

- Farmer Peet's Rib **PORK CHOPS... \$1.59** lb.
- Farmer Peet's Loin **PORK CHOPS... \$1.69** lb.
- Farmer Peet's Loin End **PORK ROAST... \$1.19** lb.
- Farmer Peet's Country Style **SPARERIBS \$1.09** lb.
- Fancy Stuffed **PORK CHOPS... \$1.59** lb.

Farmer Peet's Whole
SEMI-BONELESS
HAM
WATER ADDED
99¢ lb.
Butt-Half \$1.19 lb.
Center Slices . \$1.79 lb.

Polly Pride Whole
BEEF LOINS \$1.85
40/50-POUND..... lb.



Fresh
STEWING CHICKEN
65¢ lb.
Wayne Grade A
MIXED FRYER PARTS
55¢ lb.

- Eckrich 1-16 **SMORGAS PAK \$1.99**
- Eckrich 12-oz. **BEEF SMORGAS PAK \$1.89**
- Eckrich 3-oz. **SLENDER SLICED MEATS 59¢**

FROZEN FOOD

- Banquet 8-oz. **COOKING BAGS 39¢**
- 11-oz. **BANQUET DINNERS..... 69¢**
- Banquet 20-oz. **FRUIT PIES 69¢**
- Banquet 20 2-Lb. **FRIED CHICKEN \$2.49**



Save 30¢ w/in-store coupon
Grillmaster
CHICKEN FRANKS
1-lb. **89¢** pkg.

Save 50¢ w/in-store coupon
Hygrade
HOT DOGS
1-lb. **\$1.09** pkg.

Save 50¢ w/in-store coupon
Hygrade Sliced
BOLOGNA
1-16 **\$1.29** pkg.

Save 70¢ w/in-store coupon
West Virginia Thick Sliced
BACON
24-oz. **\$1.99** pkg.

- Fresh Daily **GROUND BEEF CHUCK..... \$1.65** lb.
- Fancy Beef & Pork **MEAT LOAF MIX \$1.59** lb.
- Thornapple Valley **HAM STEAKS..... \$2.59** lb.
- Thornapple Valley **PETITE HAM \$2.59** lb.
- Thornapple Valley Sliced 8-oz. **COOKED HAM \$1.39**
- Thornapple Valley **CANADIAN BACON \$2.59** lb.
- Farmer Peet's **RING BOLOGNA \$1.29** lb.
- Farmer Peet's **BRAUNSWEIGER 69¢** lb.
- Farmer Peet's 12-oz. **SMOKIE LINKS \$1.29**

- 20-oz. Queen of Scot **Broccoli & Cauliflower 99¢**
- 20-oz. Queen of Scot **California Blend 99¢**
- 20-oz. Queen of Scot **Italian Blend 99¢**
- 15-count LaChoy **Egg Rolls 79¢**
- 16-oz. LaChoy **Chow Mein \$1.09**
- 15-oz. LaChoy **Beef Pepper Oriental \$1.09**
- 15-oz. LaChoy **Sweet and Sour Pork \$1.29**

- Rich's Frozen 1-lb. **BREAD DOUGH 2 for 59¢**
- Rich's Frozen **ECLAIRS 8.5 oz. box 89¢**
- Ore-Ida Frozen **ONION RINGS 7-oz. 39¢**
- Scot Lad Frozen **SHOESTRINGS 40-oz. 69¢**

- Welch's Frozen **GRAPE JUICE 12-oz. 89¢**
- Big Valley Frozen 20-oz. **SLICED PEACHES 99¢**
- Big Valley Frozen **RHUBARB 20-oz. 59¢**
- Big Valley **BLUEBERRIES 12-oz. 75¢**

Save 60¢ w/in-store coupon
Borden 1-Gallon
JUMBO TREAT
Ice Cream
\$1.89



For Better Health!
Florida 5-Lb. Bag
ORANGES \$1.19

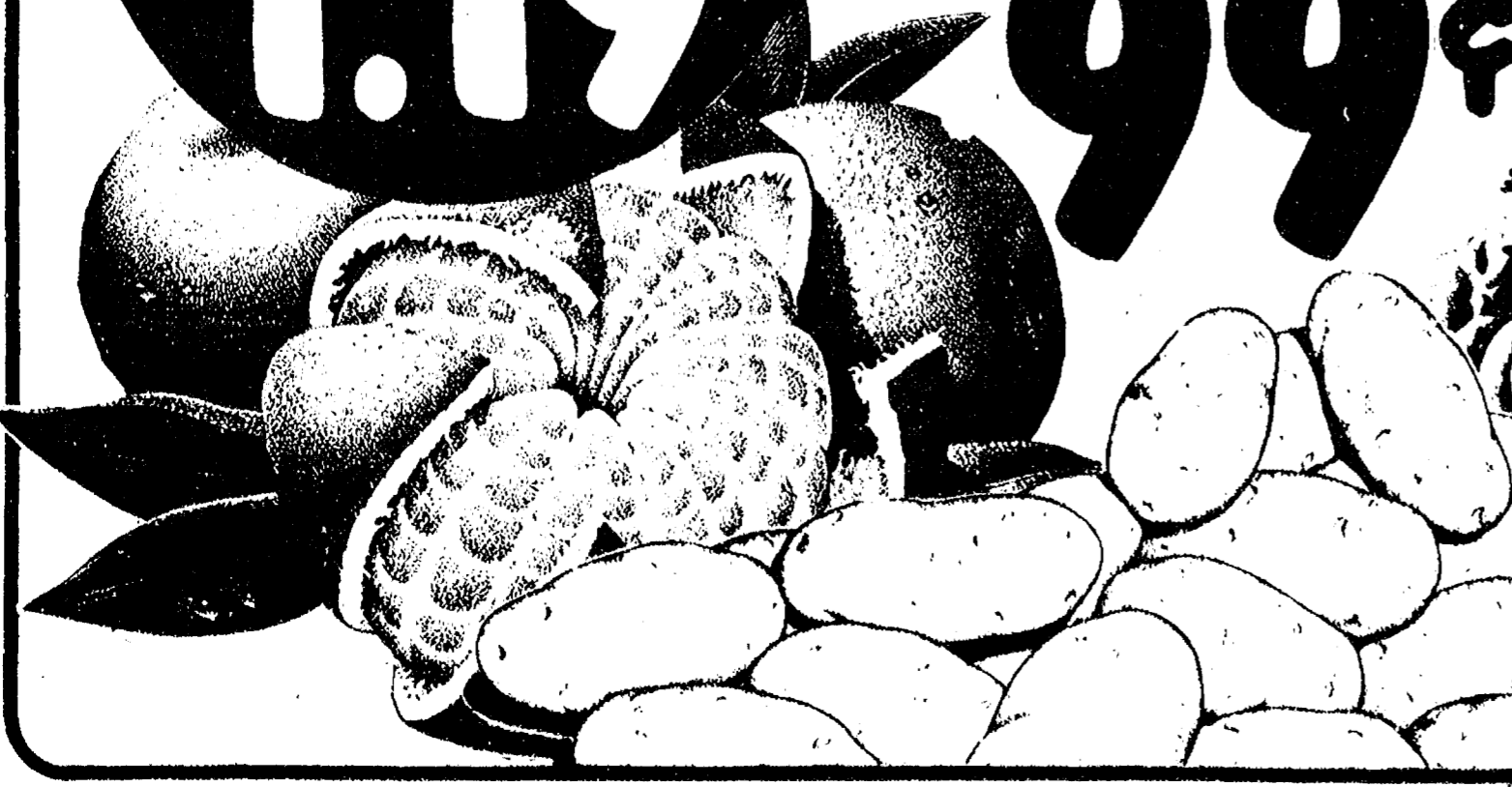
Save 90¢ w/in-store coupon
Serve 'Em Baked
IDAHO POTATOES 99¢
10-lb. Bag

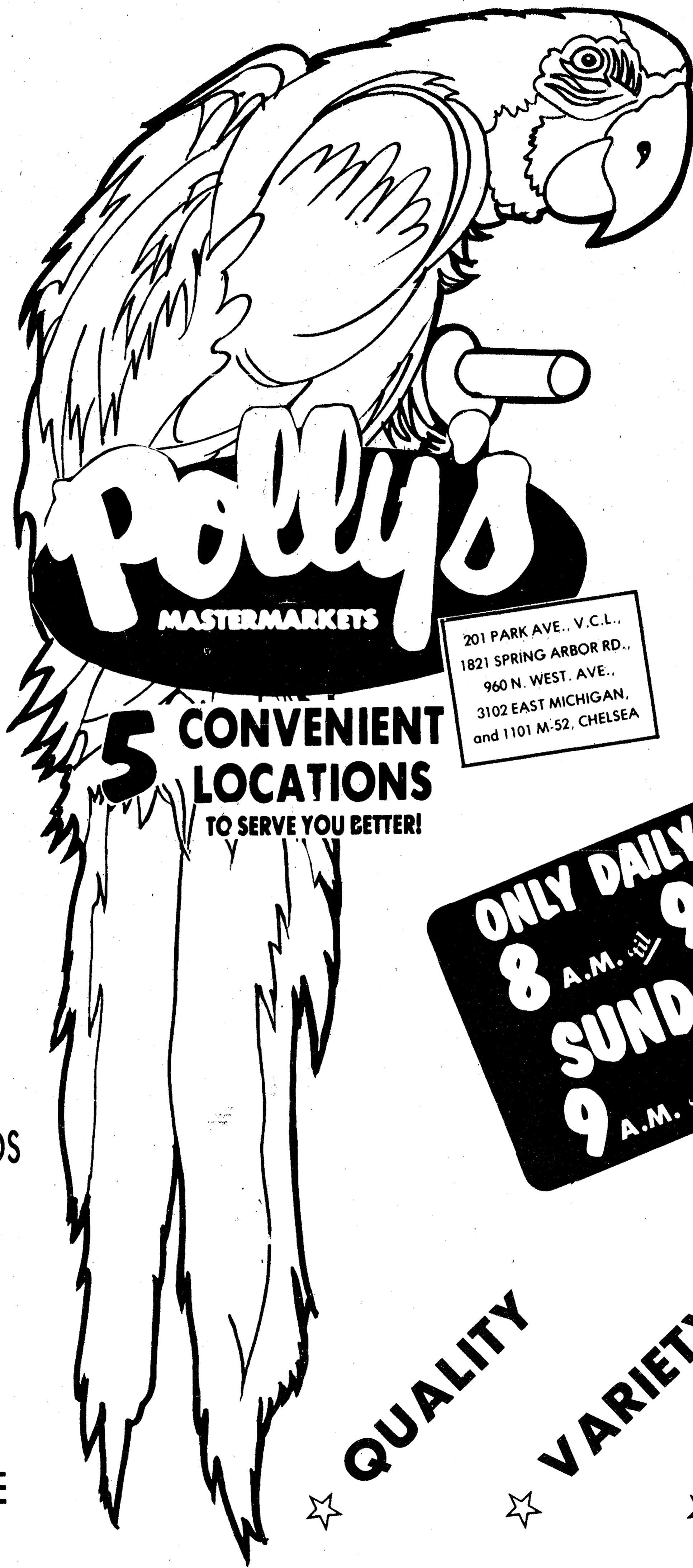
- Packed With Power 1-lb. **CARROTS..... 2 for 49¢**
- Ready to Serve 6-oz. **RADISHES 2 for 25¢**
- Gourmet's Delight **GREEN ONIONS.. 3 for 69¢**
- Red Ripe Slicing **TOMATOES 49¢** lb.

Full Flavored
PASCAL CELERY
49¢
Large Bunch

Crispy Fresh
HEAD LETTUCE
3/\$1.00
Heads For
SAVE 47¢ w/in store coupon

Ripe and Ready to Eat
FLORIDA JUMBO
AVOCADOS
2 FOR \$1





MASTERMARKETS

201 PARK AVE., V.C.L.,
1821 SPRING ARBOR RD.,
960 N. WEST AVE.,
3102 EAST MICHIGAN,
and 1101 M-52, CHELSEA

**5 CONVENIENT
LOCATIONS
TO SERVE YOU BETTER!**

ONLY DAILY
8 A.M. ^{till} 9 P.M.
SUNDAY
9 A.M. ^{till} 6 P.M.

- ☆ QUALITY PRODUCE
- ☆ CHOICE BEEF
- ☆ FRESH BAKED GOODS
- ☆ LIQUOR
- ☆ COLD BEER
- ☆ LOTTERY TICKETS
- ☆ SIDES OF BEEF
- ☆ FRUIT BASKETS
- ☆ KEG BEER
- ☆ CARRY-OUT SERVICE
- ☆ NATIONAL BRANDS
- ☆ LOW PRICES

QUALITY

VARIETY

SERVICE